

A5838

Leader in Biomolecular Solutions for Life Science



# [KD Validated] RHOT1/MIRO1 Rabbit pAb

Catalog No.: A5838

4 Publications

## Basic Information

### Observed MW

75kDa

### Calculated MW

71kDa

### Category

Polyclonal Antibody

### Applications

WB,ELISA

### Cross-Reactivity

Human,Mouse,Rat

## Background

Predicted to enable GTP binding activity and GTPase activity. Involved in cellular homeostasis; mitochondrial outer membrane permeabilization; and mitochondrion transport along microtubule. Is integral component of mitochondrial outer membrane.

## Recommended Dilutions

**WB** 1:1000 - 1:5000

**ELISA** Recommended starting concentration is 1 µg/mL. Please optimize the concentration based on your specific assay requirements.

## Immunogen Information

### Gene ID

55288

### Swiss Prot

Q8IXI2

### Immunogen

Recombinant protein (or fragment). This information is considered to be commercially sensitive.

### Synonyms

ARHT1; MIRO1; MIRO-1; RHOT1/MIRO1

## Contact

 [www.abclonal.com](http://www.abclonal.com)

## Product Information

### Source

Rabbit

### Isotype

IgG

### Purification

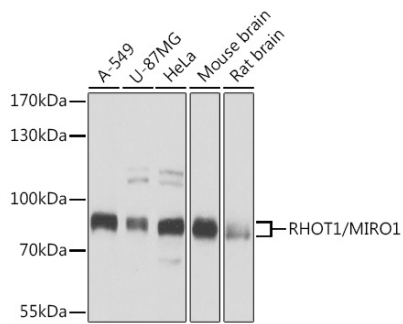
Affinity purification

### Storage

Store at -20°C. Avoid freeze / thaw cycles.

Buffer: PBS containing 50% glycerol, preserved with proclin300 or sodium azide (as specified on the Certificate of Analysis), pH 7.3.

## Validation Data



Western blot analysis of various lysates using [KD Validated] RHOT1/MIRO1 Rabbit pAb (A5838) at 1:1000 dilution.

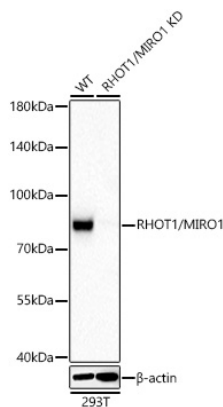
Secondary antibody: HRP-conjugated Goat anti-Rabbit IgG (H+L) (AS014) at 1:10000 dilution.

Lysates/proteins: 25µg per lane.

Blocking buffer: 3% nonfat dry milk in TBST.

Detection: ECL Basic Kit (RM00020).

Exposure time: 1s.



Western blot analysis of lysates from wild type (WT) and RHOT1/MIRO1 knockdown (KD) 293T cells using [KD Validated] RHOT1/MIRO1 Rabbit pAb (A5838) at 1:5000 dilution incubated overnight at 4°C.

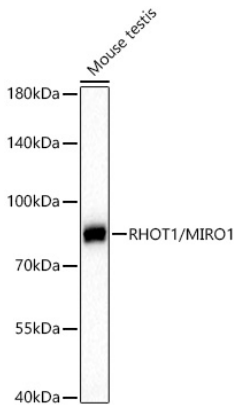
Secondary antibody: HRP-conjugated Goat anti-Rabbit IgG (H+L) (AS014) at 1:10000 dilution.

Lysates/proteins: 25 µg per lane.

Blocking buffer: 3% nonfat dry milk in TBST.

Detection: ECL Basic Kit (RM00020).

Exposure time: 60s.



Western blot analysis of lysates from Mouse testis using [KD Validated] RHOT1/MIRO1 Rabbit pAb (A5838) at 1:5000 dilution incubated overnight at 4°C.

Secondary antibody: HRP-conjugated Goat anti-Rabbit IgG (H+L) (AS014) at 1:10000 dilution.

Lysates/proteins: 25 µg per lane.

Blocking buffer: 3% nonfat dry milk in TBST.

Detection: ECL Basic Kit (RM00020).

Exposure time: 60s.