

AS088

Leader in Biomolecular Solutions for Life Science



Rabbit Anti-Chicken IgY Fab

Catalog No.: AS088

Basic Information

Observed MW

25kDa

Calculated MW

Category

Secondary Antibody

Applications

WB

Cross-Reactivity

Chicken

CloneNo number

ARC56601

Background

Secondary antibodies are affinity-purified antibodies which will work with target-specific primary antibody in the detection, sorting or purification of its specified target. Secondary antibodies offer increased versatility enabling users to use many detection systems (e.g. HRP, AP, fluorescence). They can also provide greater sensitivity through signal amplification as multiple secondary antibodies. Most commonly, secondary antibodies are generated by immunizing the host animal (different from host species of primary antibody) with a pooled population of normal immunoglobulins from the host species of primary antibody and can be further purified and modified (i.e. antibody fragmentation, label conjugation, etc.) to ensure well-characterized specificity to corresponding normal immunoglobulins.

Recommended Dilutions

WB 1:2000 - 1:20000

Immunogen Information

Gene ID

Swiss Prot

Immunogen

This information is considered to be commercially sensitive.

Synonyms

Contact

 www.abclonal.com

Product Information

Source

Rabbit

Isotype

IgG

Purification

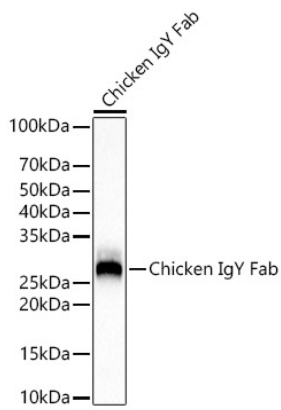
Affinity purification

Storage

Store at -20°C. Avoid freeze / thaw cycles.

Buffer: PBS containing 50% glycerol and 0.05% BSA, preserved with proclin300 or sodium azide (as specified on the Certificate of Analysis), pH 7.3.

Validation Data



Western blot analysis of lysates from Chicken IgY Fab, using Rabbit Anti-Chicken IgY Fab (AS088) at 1:20000 dilution.

Secondary antibody: HRP-conjugated Goat anti-Rabbit IgG (H+L) (AS014) at 1:10000 dilution.

Lysates/proteins: 25 μ g per lane.

Blocking buffer: 3% nonfat dry milk in TBST.

Detection: ECL Basic Kit (RM00020).

Exposure time: 1s.