


# Helicobacter Pylori; Rabbit Polyclonal (Concentrate)

<b>Availability/Contents:</b>	<u>Item #</u> RA0379-C.5	<u>Volume</u> 0.5 ml
-------------------------------	-----------------------------	-------------------------

**Description:**

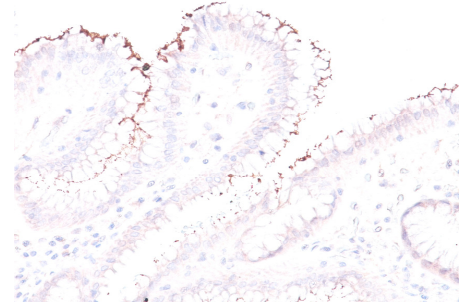
Species:	Rabbit
Immunogen:	Total sonicate of Helicobacter pylori
Clone:	Rabbit Polyclonal
Isotype:	IgG
Entrez Gene ID:	Not Known
Synonyms:	H. pylori
Mol. Weight of Antigen:	Multiple
Format:	200µg/ml of Ab purified from Bioreactor Concentrate by Protein A/G. Prepared in 10mM PBS with 0.05% BSA & 0.05% azide.
Specificity:	This antibody stains the individual H. pylori bacterium when it presents on the surface of the epithelium or in the cytoplasm of the epithelial cells in biopsy tissue sections from the antrum and body of the stomach.
Background:	The spiral shaped bacterium Helicobacter pylori is strongly associated with inflammation of the stomach and is also implicated in the development of gastric malignancy. H. pylori is known to cause peptic ulcers and chronic gastritis in human. It is associated with duodenal ulcers and may be involved in the development of adenocarcinoma and low-grade lymphoma of mucosa associated lymphoid tissue in the stomach.
Species Reactivity:	Helicobacter pylori
Positive Control:	Helicobacter pylori infected stomach biopsy.
Cellular Localization:	Cell surface and cytoplasm
Titer/ Working Dilution:	Immunohistochemistry (Frozen and Formalin-fixed): 1-2 µg/ml Flow Cytometry: 0.5-1 µg/million cells Immunofluorescence: 1-2 µg/ml
Microbiological State:	This product is not sterile.

Storage: 2° C  8° C



ScyTek Laboratories, Inc.  
205 South 600 West  
Logan, UT 84321  
U.S.A.

**Uses/Limitations:** Not to be taken internally.  
 For Research Use Only.  
 This product is intended for qualitative immunohistochemistry with normal and neoplastic formalin-fixed, paraffin-embedded tissue sections, to be viewed by light microscopy.  
 Do not use if reagent becomes cloudy.  
 Do not use past expiration date.  
 Non-Sterile.



**Ordering Information and Current Pricing at [www.scytek.com](http://www.scytek.com)**

Formalin-fixed, paraffin-embedded human stomach stained with Helicobacter pylori; Rabbit Polyclonal.

**Procedure:**

1. **Tissue Section Pretreatment (Required):** Staining of formalin fixed, paraffin embedded tissue sections is significantly enhanced by pretreatment with Citrate Plus (ScyTek catalog# CPL500).
2. **Primary Antibody Incubation Time:** We suggest an incubation period of 30 minutes at room temperature. However, depending upon the fixation conditions and the staining system employed, optimal incubation should be determined by the user.
3. **Visualization:** For maximum staining intensity we recommend the “UltraTek HRP Anti-Polyvalent Lab Pack” (ScyTek catalog# UHP125, see IFU for instructions) combined with the “DAB Chromogen/Substrate Bulk Pack (High Contrast)” (ScyTek catalog# ACV500, see IFU for instructions).


**Precautions:** Contains Sodium Azide as a preservative (0.09% w/v).  
 Do not pipette by mouth.  
 Avoid contact of reagents and specimens with skin and mucous membranes.  
 Avoid microbial contamination of reagents or increased nonspecific staining may occur.  
 This product contains no hazardous material at a reportable concentration according to U.S. 29 CFR 1910.1200, OSHA Hazardous Communication Standard and EC Directive 91/155/EC.


**References:**

1. Fiorentino M et. al. Infect Immun 81:876-883 (2013).
2. Moodley Y et. al. PLoS Pathog 8(5): e1002693. doi:10.1371/journal.ppat.1002693 (2012).

**Warranty:**

No products or “Instructions For Use (IFU)” are to be construed as a recommendation for use in violation of any patents. We make no representations, warranties or assurances as to the accuracy or completeness of information provided on our IFU or website. Our warranty is limited to the actual price paid for the product. ScyTek Laboratories, Inc. is not liable for any property damage, personal injury, time or effort or economic loss caused by our products. Immunohistochemistry is a complex technique involving both histological and immunological detection methods. Tissue processing and handling prior to immunostaining can cause inconsistent results. Variations in fixation and embedding or the inherent nature of the tissue specimen may cause variations in results. Endogenous peroxidase activity or pseudoperoxidase activity in erythrocytes and endogenous biotin may cause non-specific staining depending on detection system used.

Storage: 2° C  8° C



ScyTek Laboratories, Inc.  
 205 South 600 West  
 Logan, UT 84321  
 U.S.A.