

Anti-Tubulin Alpha antibody

#Cat: NB-22-6794-20	Size: 20µg
#Cat: NB-22-6794-50	Size: 50µg
#Cat: NB-22-6794-100	Size: 100µg
#Cat: NB-22-6794-200	Size: 200µg

General Information

Product Type	Primary antibodies
Short Description	Rabbit polyclonal antibody anti-Tubulin alpha-1A chain and Tubulin alpha-1 chain and Tubulin alpha-1C chain is suitable for use in Western Blot, Immunohistochemistry, Immunofluorescence and ELISA research applications.
Applications	WB, IHC-P, IF-P, ELISA
Host/Source	Rabbit
Reactivity	Human, Mouse, Rat

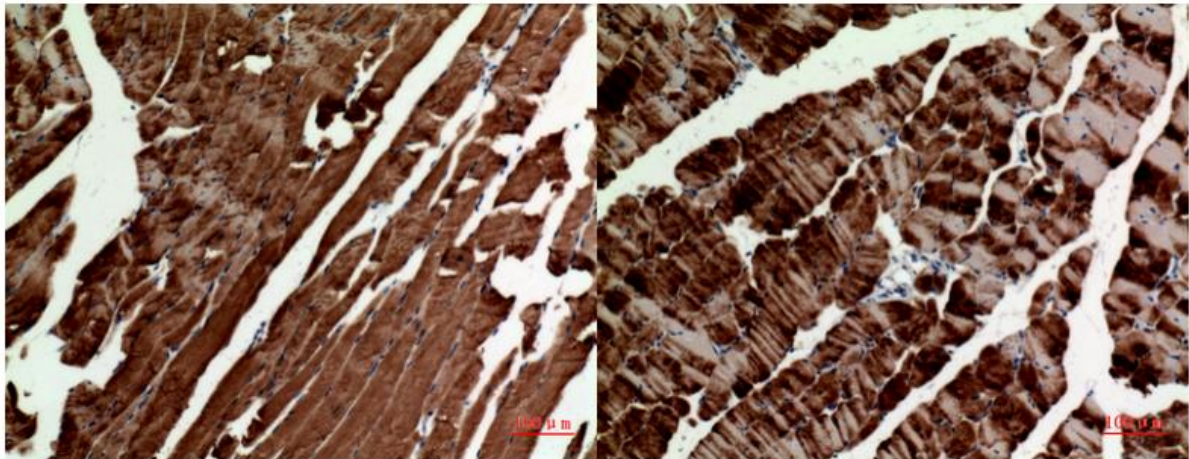
Product Properties

Clonality	Polyclonal
Clone ID	
Concentration	1 mg/mL
Conjugation	Unconjugated
Purification	The antibody was affinity-purified from rabbit anti-serum by affinity-chromatography.
Dilution Range	WB 1:500-1:2000 IHC 1:100-1:300 ELISA 1:20000
Formulation	PBS, 50% Glycerol, 0.5% BSA and 0.02% Sodium Azide.
Isotype	IgG
Storage Instruction	Store at -20°C for up to 1 year from the date of receipt, and avoid repeat freeze-thaw cycles.

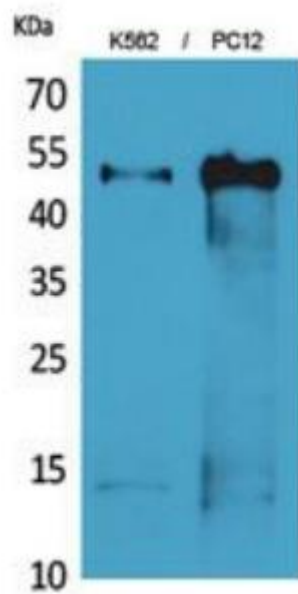
Target Information

Gene ID	10376 84790 7846 TUBA1B TUBA1C TBA1B HUMAN TBA1C HUMAN TBA1A HUMAN
Immunogen	Synthesized peptide derived from human Tubulin Alpha around the non-acetylation site of K112.
Immunogen Region	
Specificity	Tubulin Alpha polyclonal antibody (Tubulin alpha-1A chain and Tubulin alpha-1B chain and Tubulin alpha-1C chain) binds to endogenous Tubulin alpha-1A chain and Tubulin alpha-1B chain and Tubulin alpha-1C chain.

Immunogen Sequence



Immunohistochemical analysis of paraffin-embedded mouse-muscle, antibody was diluted at 1:100



Western blot analysis of K562, PC12 cells using Tubulin Alpha Polyclonal Antibody. Secondary antibody was diluted at 1:20000

This product is suitable for in-vitro studies under the RESEARCH USE ONLY [RUO] licence. This product must not be used as for diagnostic or other medical purposes.