

A4349

Leader in Biomolecular Solutions for Life Science



TOM70 Rabbit pAb

Catalog No.: A4349 **8 Publications**

Basic Information

Observed MW

75 kDa

Calculated MW

67 kDa

Category

Polyclonal Antibody

Applications

WB,IF/ICC,ELISA

Cross-Reactivity

Human,Mouse,Rat

Background

This gene encodes an import receptor of the outer mitochondrial membrane that is part of the translocase of the outer membrane complex. This protein is involved in the import of mitochondrial precursor proteins. The protein interacts with the SARS-CoV and SARS-Cov-2 ORF9b proteins.

Recommended Dilutions

WB 1:500 - 1:5000

IF/ICC 1:50 - 1:200

ELISA Recommended starting concentration is 1 µg/mL. Please optimize the concentration based on your specific assay requirements.

Immunogen Information

Gene ID

9868

Swiss Prot

O94826

Immunogen

Recombinant protein (or fragment). This information is considered to be commercially sensitive.

Synonyms

Tom70; TOMM70A; TOM70

Contact

 www.abclonal.com

Product Information

Source

Rabbit

Isotype

IgG

Purification

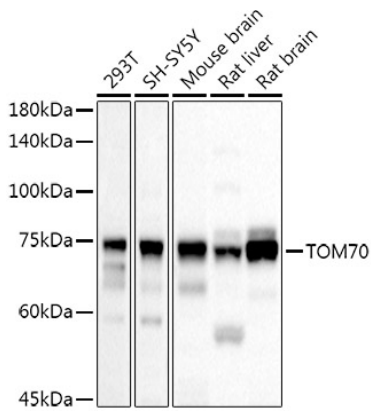
Affinity purification

Storage

Store at -20°C. Avoid freeze / thaw cycles.

Buffer: PBS containing 50% glycerol, preserved with proclin300 or sodium azide (as specified on the Certificate of Analysis), pH 7.3.

Validation Data



Western blot analysis of various lysates using TOM70 Rabbit pAb (A4349) at 1:500 dilution.

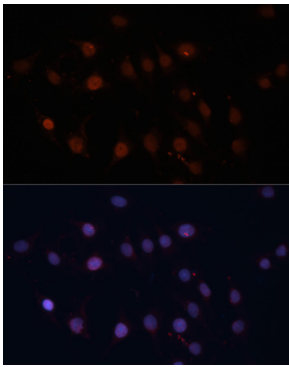
Secondary antibody: HRP-conjugated Goat anti-Rabbit IgG (H+L) (AS014) at 1:10000 dilution.

Lysates/proteins: 25µg per lane.

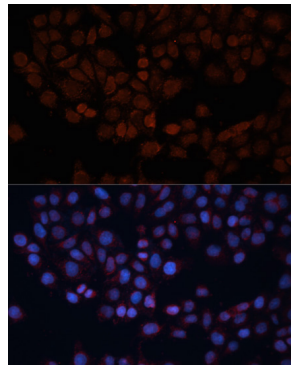
Blocking buffer: 3% nonfat dry milk in TBST.

Detection: ECL Basic Kit (RM00020).

Exposure time: 10s.



Immunofluorescence analysis of C6 cells using TOM70 Rabbit pAb (A4349) at dilution of 1:100. Secondary antibody: Cy3-conjugated Goat anti-Rabbit IgG (H+L) (AS007) at 1:500 dilution. Blue: DAPI for nuclear staining.



Immunofluorescence analysis of HeLa cells using TOM70 Rabbit pAb (A4349) at dilution of 1:100. Secondary antibody: Cy3-conjugated Goat anti-Rabbit IgG (H+L) (AS007) at 1:500 dilution. Blue: DAPI for nuclear staining.