

A6325

Leader in Biomolecular Solutions for Life Science



CFDP1 Rabbit pAb

Catalog No.: A6325

Basic Information

Observed MW

33kDa

Calculated MW

34kDa

Category

Polyclonal Antibody

Applications

WB,ELISA

Cross-Reactivity

Human,Mouse,Rat

Background

Predicted to act upstream of or within several processes, including cell adhesion; negative regulation of fibroblast apoptotic process; and regulation of cell shape. Predicted to be located in kinetochore.

Recommended Dilutions

WB 1:500 - 1:2000

ELISA Recommended starting concentration is 1 µg/mL. Please optimize the concentration based on your specific assay requirements.

Immunogen Information

Gene ID

10428

Swiss Prot

Q9UEE9

Immunogen

Recombinant protein (or fragment). This information is considered to be commercially sensitive.

Synonyms

p97; BCNT; CP27; SWC5; Yeti; CENP-29; BUCENTAUR; CFDP1

Contact



www.abclonal.com

Product Information

Source

Rabbit

Isotype

IgG

Purification

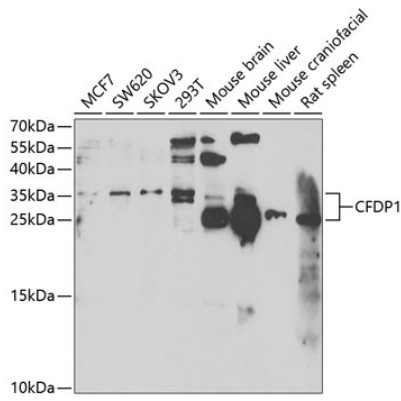
Affinity purification

Storage

Store at -20°C. Avoid freeze / thaw cycles.

Buffer: PBS containing 50% glycerol, preserved with proclin300 or sodium azide (as specified on the Certificate of Analysis), pH 7.3.

Validation Data



Western blot analysis of various lysates using CFDP1 Rabbit pAb (A6325) at 1:1000 dilution.

Secondary antibody: HRP-conjugated Goat anti-Rabbit IgG (H+L) (AS014) at 1:10000 dilution.

Lysates/proteins: 25µg per lane.

Blocking buffer: 3% nonfat dry milk in TBST.

Detection: ECL Enhanced Kit (RM00021).

Exposure time: 90s.