

---

Product Manual

# $\alpha$ -Ketoglutarate Assay Kit (Colorimetric)

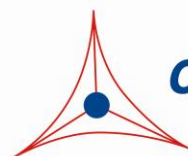
Catalog Number

MET-5131

100 assays

**FOR RESEARCH USE ONLY**  
**Not for use in diagnostic procedures**

---



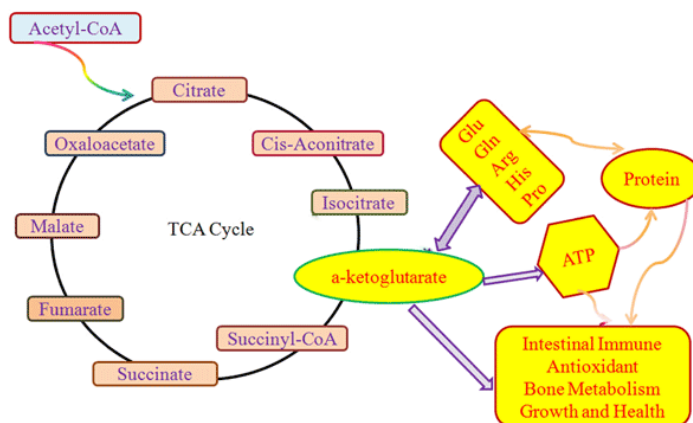
**CELL BIOLABS, INC.**  
*Creating Solutions for Life Science Research*

## Introduction

$\alpha$ -Ketoglutarate ( $\alpha$ -KG, or 2-oxoglutarate), is an important molecule with a variety of roles within multiple metabolic pathways.  $\alpha$ -KG is produced by the oxidative decarboxylation of isocitrate via isocitrate dehydrogenase and is also the keto acid product of the deamination of glutamate via glutamate dehydrogenase.  $\alpha$ -Ketoglutarate exerts its influence in the tricarboxylic acid (TCA) cycle as a rate determining intermediary of cellular energy metabolism. Anaplerotic reactions can refuel the cycle by generating  $\alpha$ -Ketoglutarate from glutamate via glutamate dehydrogenase.

$\alpha$ -Ketoglutarate acts as a nitrogen transporter that facilitates amino acid synthesis, while also inhibiting protein degradation in muscles. L-Alanine or L-Aspartate can react with  $\alpha$ -ketoglutarate via the transaminase enzymes alanine aminotransferase (ALT) or aspartate aminotransferase (AST) to produce glutamate, which is the basis of nitrogen utilization and elimination. Amino groups from amino acids attach to  $\alpha$ -KG where they are transported to the liver and can enter the urea cycle. These transamination and deamination pathways are also important for ammonia detoxification, as well as formation of the neurotransmitters glutamate and *gamma*-aminobutyric acid (GABA).

Other characteristics of  $\alpha$ -Ketoglutarate include antioxidant activity by quenching of hydrogen peroxide build up and facilitating its elimination. It also generates ATP via oxidative decarboxylation for energy in intestinal cell processes and redox homeostasis. The molecule can influence hydroxylation of proline to hydroxyproline, thus increasing the formation of collagen and bone matrix formation. Recently,  $\alpha$ -KG has been noted to extend cell lifespan and delay age-related diseases (Figure 1).



**Figure 1:  $\alpha$ -Ketoglutarate's influence on many cellular functions.**

Cell Biolabs'  $\alpha$ -Ketoglutarate Assay Kit is a simple colorimetric assay that measures the activity of  $\alpha$ -Ketoglutarate present within plasma, serum, tissue homogenates, or cell suspensions in a 96-well microtiter plate format. Each kit provides sufficient reagents to perform up to 100 assays\*, including blanks, standards and samples. Sample  $\alpha$ -Ketoglutarate concentrations are determined by comparison with a known  $\alpha$ -Ketoglutarate standard. The kit has a detection sensitivity limit of  $\sim 3.9 \mu\text{M}$   $\alpha$ -Ketoglutarate.

***\*Note: Pyruvate present in samples can generate background signal. If pyruvate is present in your testing sample, perform 2 assays per sample reaction. Treat one sample reaction with  $\alpha$ -KG Reaction Converter and the other without.  $\alpha$ -Ketoglutarate is calculated from the difference in OD readings from the 2 wells.***

## **Assay Principle**

Cell Biolabs'  $\alpha$ -Ketoglutarate Assay Kit measures  $\alpha$ -Ketoglutarate through coupled enzymatic reactions.  $\alpha$ -Ketoglutarate is transaminated with the production of pyruvate. Pyruvate is then detected with the colorimetric probe. Samples and standards are incubated for 60-180 minutes and then read with a standard 96-well spectrophotometer plate reader (540-570 nm). Samples are compared to a known concentration of  $\alpha$ -Ketoglutarate standard within the 96-well microtiter plate format.

## **Related Products**

1. MET-5012: Lactate Assay (Colorimetric)
2. MET-5022: Glycogen Assay Kit (Colorimetric)
3. MET-5054: L-Amino Acid Assay Kit (Colorimetric)
4. MET-5127: Aspartate Aminotransferase (AST) Activity Assay (Colorimetric)
5. MET-5123: Alanine Aminotransferase (ALT) Activity assay Kit (Colorimetric)

## **Kit Components (shipped on blue ice)**

1.  $\alpha$ -KG Reaction Converter (Part No. 51311C): One 750  $\mu$ L tube
2.  $\alpha$ -KG Substrate Mix (Part No. 51322B): One 750  $\mu$ L tube
3.  $\alpha$ -Ketoglutarate Standard (Part No. 51321C): One 100  $\mu$ L tube of a 100 mM solution
4.  $\alpha$ -KG Enzyme Mix (Part No. 51312C): One 150  $\mu$ L tube
5. Colorimetric Probe (Part No. 51253C): One 150  $\mu$ L amber tube
6. HRP (Part No. 234402): One 100  $\mu$ L tube of a 100 U/mL solution in glycerol
7. 10X Assay Buffer (Part No. 50292A): One 25 mL bottle

## **Materials Not Supplied**

1. Distilled or deionized water
2. 10 kDa MWCO centrifugal filter (e.g., Amicon Ultra 0.5 mL) (Optional) (for high protein content samples)
3. 1X PBS
4. Standard 96-well spectrophotometric microtiter plate

## **Storage**

Upon receipt, store the  $\alpha$ -KG Substrate Mix and 10X Assay Buffer at 4°C. Store the remaining components at -20°C.

## **Preparation of Reagents**

- 1X Assay Buffer: Warm the 10X Assay Buffer to room temperature prior to using. Dilute the Assay Buffer to 1X with deionized water by diluting the 25 mL Buffer with 225 mL deionized water for 250 mL total. Mix to homogeneity. Store the 1X Assay Buffer at 4°C up to six months.
- Reaction Reagent: Prepare a Reaction Reagent solution by diluting the kit components accordingly. Dilute the  $\alpha$ -KG Reaction Converter 1:20,  $\alpha$ -KG Substrate Mix 1:20,  $\alpha$ -KG Enzyme Mix 1:100,

HRP 1:500, and Colorimetric Probe 1:100 in 1X Assay Buffer. See Table 1A below for examples of Reaction Reagent preparation based on the number of assays employed.

*Note: Prepare the Reaction Reagent solution sequentially based on the chart below, beginning with the 1X Assay Buffer and adding each component to the mixture. Add the Colorimetric Probe last to the solution. Vortex the solution thoroughly between each component addition, and protect the solution from light until use. Prepare only enough for immediate use by scaling the chart examples proportionally based on the number of assays needed. For best results, place the Reaction Reagent on ice and use within 30 minutes of preparation. Do not store Reaction Reagent solutions.*

1X Assay Buffer (μL)	α-KG Reaction Converter (μL)	α-KG Substrate Mix (μL)	α-KG Enzyme Mix (μL)	HRP (μL)	Colorimetric Probe (μL)	Number of Assays	Total Volume (150 μL/well)
6585	375	375	75	15	75	50	7,500
3290	188	188	38	8	38	25	3,750

**Table 1A. Preparation of Reaction Reagent.**

*Note: The Colorimetric Probe is light sensitive and must be stored accordingly.*

- Negative Control Reaction Reagent: Prepare a Negative Control Reaction Reagent by **omitting** the α-KG Reaction Converter accordingly. Dilute the α-KG Substrate Mix 1:20, Colorimetric Probe 1:100, HRP 1:500, α-KG Enzyme Mix 1:100 in 1X Assay Buffer. See Table 1B below for examples of the Negative Control Reaction Reagent preparation based on the number of assays employed.

*Note: Prepare the Negative Control Reaction Reagent solution sequentially based on the chart below, beginning with the 1X Assay Buffer and adding each component to the mixture. Add the Colorimetric Probe last to the solution. Vortex the solution thoroughly between each component addition, and protect the solution from light until use. Prepare only enough for immediate use by scaling the chart examples proportionally based on the number of assays needed. For best results, place the Negative Control Reaction Reagent on ice and use within 30 minutes of preparation. Do not store Negative Control Reaction Reagent solutions.*

1X Assay Buffer (μL)	α-KG Reaction Converter (μL)	α-KG Substrate Mix (μL)	α-KG Enzyme Mix (μL)	HRP (μL)	Colorimetric Probe (μL)	Number of Assays	Total Volume (150 μL/well)
6960	0	375	75	15	75	50	7,500
3478	0	188	38	8	38	25	3,750

**Table 1B. Preparation of Negative Control Reaction Reagent.**

*Note: The Colorimetric Probe is light sensitive and must be stored accordingly.*

## **Preparation of Samples**

Samples should be assayed immediately or stored at  $-80^{\circ}\text{C}$  prior to performing the assay. Optimal experimental conditions for samples must be determined by the investigator. The following recommendations are only guidelines and may be altered to optimize or complement the user's experimental design. A set of serial dilutions is recommended for samples to achieve optimal assay results and minimize possible interfering compounds. Run proper controls as necessary. Always run a standard curve with samples. High protein concentrations may interfere with the assay. In this case, filter the sample with a 10kDa MWCO centrifugal filter before assaying (to reduce the possibility of protein interference and turbidity).

- **Tissues:** Weigh 500-1000 mg of sample and mince with scissors and a dounce until tissue is thoroughly liquified. Add 2 mL of 1X Assay Buffer or PBS and further sonicate the homogenate for several cycles on ice. Centrifuge 10 minutes at 12,000 x g to remove debris. Recover the supernatant and recentrifuge in a separate tube to clarify it further. Recover supernatant in a fresh eppendorf tube and incubate on ice. Prepare samples for testing and store the remaining supernatant at  $-80^{\circ}\text{C}$ . Prepare further dilutions in 1X Assay Buffer.
- **Cell Suspensions:** Prepare cells at  $1 \times 10^6$  cells/mL and rapidly homogenize the cell pellet with 0.2 mL cold PBS or 1X Assay Buffer. Centrifuge 10 minutes at 12,000 x g to remove debris. Recover supernatant in a fresh eppendorf tube and incubate on ice. Prepare samples for testing and store the remaining supernatant at  $-80^{\circ}\text{C}$ . Prepare further dilutions in 1X Assay Buffer.
- **Serum:** Collect blood without using an anticoagulant. Allow blood to clot for 30 minutes at room temperature. Centrifuge at 2000 x g and  $4^{\circ}\text{C}$  for 10 minutes. Remove the serum layer and store on ice. Take care to avoid disturbing the white buffy layer. Aliquot samples for testing and store remaining solution at  $-80^{\circ}\text{C}$ . Perform serum dilutions in 1X Assay Buffer. Perform several serial dilutions to ensure values are within the range of the standard curve.
- **Plasma:** Collect blood with heparin or citrate (EDTA could cause a quenching effect) and centrifuge at 1000 x g and  $4^{\circ}\text{C}$  for 10 minutes. Remove the plasma layer and store on ice. Take care to avoid disturbing the white buffy layer. Aliquot samples for testing and store remaining solution at  $-80^{\circ}\text{C}$ . Perform plasma dilutions in 1X Assay Buffer. Perform several serial dilutions to ensure values are within the range of the standard curve.

### *Notes:*

1. *Samples with NADH concentrations above  $10 \mu\text{M}$  and glutathione concentrations above  $50 \mu\text{M}$  will oxidize the Colorimetric Probe and could result in erroneous readings. To minimize this interference, it is recommended that superoxide dismutase (SOD) be added to the reaction at a final concentration of 40 U/mL.*
2. *Avoid samples containing DTT or  $\beta$ -mercaptoethanol since the Colorimetric Probe is not stable in the presence of thiols (above  $10 \mu\text{M}$ ).*
3. *The Colorimetric Probe is unstable at high pH ( $>8.5$ ).*

## **Preparation of $\alpha$ -Ketoglutarate Standard Curve**

1. Prepare fresh  $\alpha$ -Ketoglutarate standards by diluting the  $\alpha$ -Ketoglutarate Standard stock from 100 mM to 1 mM in 1X PBS for a 1:100 dilution. (Example: Add 10  $\mu\text{L}$  of the  $\alpha$ -Ketoglutarate Standard stock tube to 990  $\mu\text{L}$  of 1X PBS). Vortex thoroughly.
2. Continue preparing a dilution series of  $\alpha$ -Ketoglutarate in the range of 0-250  $\mu\text{M}$  by diluting the  $\alpha$ -Ketoglutarate standard preparation according to Table 2.

Tubes	1 mM $\alpha$ -Ketoglutarate Standard ( $\mu$ L)	1X PBS ( $\mu$ L)	Final $\alpha$ -Ketoglutarate Concentration ( $\mu$ M)	$\alpha$ -Ketoglutarate Quantity (nmoles/well) *
1	250	750	250	12.5
2	250 of Tube #1	250	125	6.25
3	250 of Tube #2	250	62.5	3.13
4	250 of Tube #3	250	31.3	1.56
5	250 of Tube #4	250	15.6	0.78
6	250 of Tube #5	250	7.8	0.39
7	250 of Tube #6	250	3.9	0.20
8	0	250	0	0

**Table 2. Preparation of  $\alpha$ -Ketoglutarate Standards.**

*Note: \*Based on 50  $\mu$ L volume/well. Do not store diluted  $\alpha$ -Ketoglutarate standard solutions.*

### **Assay Protocol**

Each  $\alpha$ -Ketoglutarate standard, controls and samples should be assayed in duplicate or triplicate. A freshly prepared standard curve should be used each time the assay is performed.

*\*Note: Pyruvate present in samples can generate background signal. If pyruvate is present in your testing sample, perform 2 assays per sample reaction. Treat one sample reaction with  $\alpha$ -KG Reaction Converter and the other without (1X Assay buffer will be added to the Negative Control Reaction Mix in place of  $\alpha$ -KG Reaction Converter).  $\alpha$ -Ketoglutarate is calculated from the difference in OD readings from the 2 wells.*

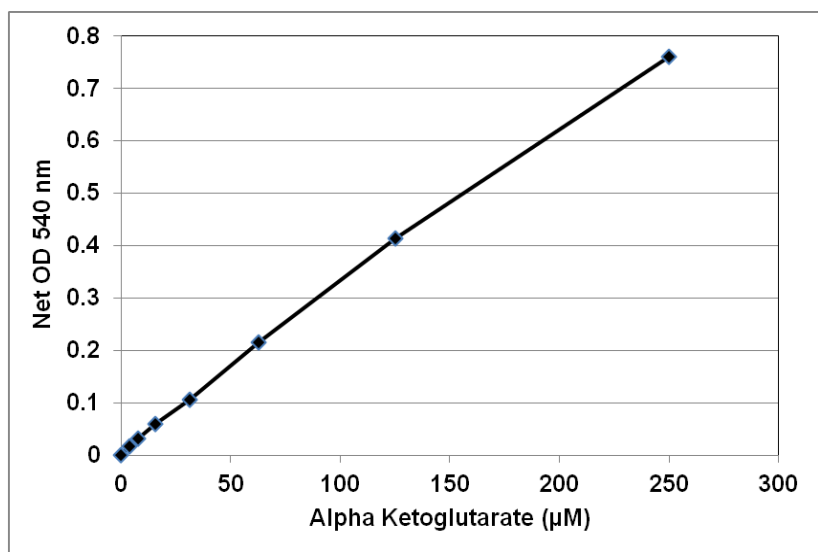
1. Add 50  $\mu$ L of the diluted  $\alpha$ -Ketoglutarate standards, controls or samples to each well of a 96-well microtiter plate.
2. Add 150  $\mu$ L of the prepared Reaction Reagent to the  $\alpha$ -Ketoglutarate standards and to one half of the paired sample wells. Mix the well contents thoroughly.
3. Add 150  $\mu$ L of the prepared Negative Control Reaction Reagent to the remaining half of the paired sample wells, and mix the well contents thoroughly.
4. Incubate the wells for 60-180 minutes at 37°C protected from light.

*Note: This assay is continuous (not terminated) and therefore may be measured at multiple time points to follow the reaction kinetics.*

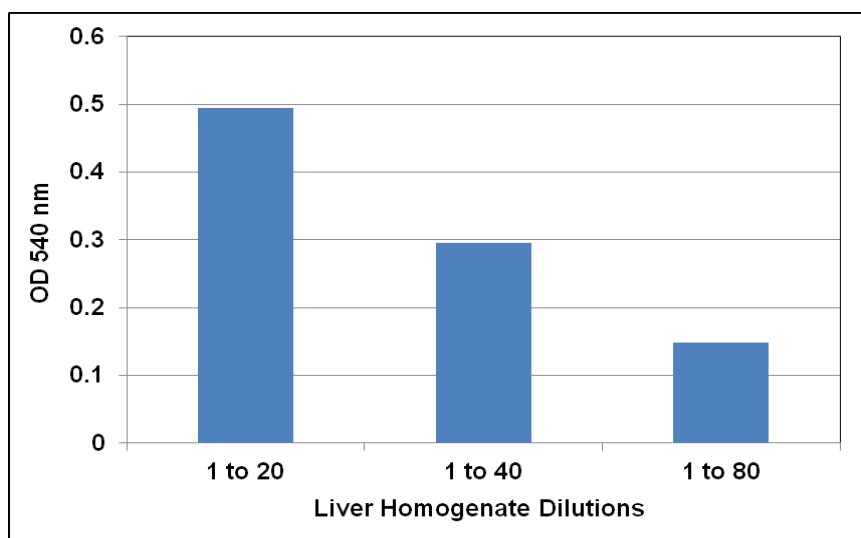
5. Read the plate with a spectrophotometric microplate reader at 540-570 nm.

### **Example of Results**

The following figures demonstrate typical  $\alpha$ -Ketoglutarate Assay Kit results. One should use the data below for reference only. This data should not be used to interpret or calculate actual sample results.



**Figure 2: Example  $\alpha$ -Ketoglutarate Standard Curve.**



**Figure 3: Liver Homogenates.** Chicken livers were homogenized and sonicated in cold 1X Assay Buffer. Upon centrifugation, the homogenate was tested according to the assay protocol.

### **Calculation of Results**

1. Calculate the average absorbance values for every standard, control, and sample. Subtract the average zero standard value from itself and all standard and sample values. This is the corrected absorbance.
2. Subtract the sample absorbance well values without  $\alpha$ -KG Reaction Converter ( $-\alpha$ -KG RC) from the sample well values containing  $\alpha$ -KG Reaction Converter ( $+\alpha$ -KG RC) to obtain the net absorbance difference. The absorbance difference is due to the endogenous pyruvate activity.

$$\text{Net } \Delta\text{Abs} = (\text{Abs}_{+\alpha\text{-KG RC}}) - (\text{Abs}_{-\alpha\text{-KG RC}})$$

3. Plot the corrected absorbance for the standards against the final concentration of the  $\alpha$ -Ketoglutarate standards from Table 2 to determine the best curve. Use the final time point absorbance values to plot the  $\alpha$ -Ketoglutarate standard curve. See Figure 2 for an example standard curve.

- Determine the  $\alpha$ -Ketoglutarate concentration of the samples with the equation obtained from the linear regression analysis of the standard curve. Substitute the corrected absorbance values for each sample. Only use values within the range of the standard curve. Remember to account for dilution factors.

$$\alpha\text{-Ketoglutarate } (\mu\text{M}) = \left[ \frac{\text{Sample Corrected Absorbance}}{\text{Slope}} \right] \times \text{Sample dilution}$$

Note:  $\alpha$ -Ketoglutarate molecular weight is 146.11 g/mol.

## **References**

- Hammerqvist, F., et al. (1991) *Surgery* **109**: 28-36.
- He, L., et al. (2015) *Curr. Protein Pept. Sci.* **16**: 576-581.
- Hou, Y.Q., et al. (2010) *Front Biosci.* **16**: 1186-1196.
- Tatara M., et al. (2005) *Poult. Sci.* **84(10)**: 1604-1609.
- Yao, K., et al. (2012) *Amino Acids* **42**: 2491-2500.

## **Recent Product Citations**

- Cong, J. et al. (2025). Intrauterine hyperglycemia impairs mouse primordial germ cell development and fertility by sex-specific epigenetic reprogramming interference. *Cell Discov.* **11(1)**:74. doi: 10.1038/s41421-025-00821-0.
- Dudzińska, E. et al. (2025). Mitochondrial Dysfunction and Reduced TCA Cycle Metabolite Levels in Inflammatory Bowel Disease Patients. *J Inflamm Res.* **18**:5205-5216. doi: 10.2147/JIR.S487349.
- Park, S.S. et al. (2024). Extracellular glucose triggers metabolic reprogramming of cultured human bronchial epithelial cells and indirect fibroblast activation. *FEBS Open Bio.* doi: 10.1002/2211-5463.13852.
- Henning, Y. et al. (2023). Cigarette smoke causes a bioenergetic crisis in RPE cells involving the downregulation of HIF-1 $\alpha$  under normoxia. *Cell Death Discov.* **9(1)**:398. doi: 10.1038/s41420-023-01695-5.
- Cappello, A. et al. (2022). Extracellular serine empowers epidermal proliferation and psoriasis-like symptoms. *Sci Adv.* **8(50)**:eabm7902. doi: 10.1126/sciadv.abm7902.

## **Warranty**

These products are warranted to perform as described in their labeling and in Cell Biolabs literature when used in accordance with their instructions. THERE ARE NO WARRANTIES THAT EXTEND BEYOND THIS EXPRESSED WARRANTY AND CELL BIOLABS DISCLAIMS ANY IMPLIED WARRANTY OF MERCHANTABILITY OR WARRANTY OF FITNESS FOR PARTICULAR PURPOSE. CELL BIOLABS's sole obligation and purchaser's exclusive remedy for breach of this warranty shall be, at the option of CELL BIOLABS, to repair or replace the products. In no event shall CELL BIOLABS be liable for any proximate, incidental or consequential damages in connection with the products.

## **Contact Information**

Cell Biolabs, Inc.  
5628 Copley Drive  
San Diego, CA 92111  
Worldwide: +1 858 271-6500  
USA Toll-Free: 1-888-CBL-0505  
E-mail: [tech@cellbiolabs.com](mailto:tech@cellbiolabs.com)  
[www.cellbiolabs.com](http://www.cellbiolabs.com)

©2019-2026: Cell Biolabs, Inc. - All rights reserved. No part of these works may be reproduced in any form without permissions in writing.