

A27383

Leader in Biomolecular Solutions for Life Science



Rabbit anti-Monkey IgE mAb

Catalog No.: A27383

Basic Information

Observed MW

Calculated MW

Category

Monoclonal Antibody

Applications

FC

Cross-Reactivity

Cynomolgus

Background

IgE is the class of antibodies produced in the lungs, skin, and mucous membranes. It may protect against parasite invasion, but it is a major factor in allergic reactions. The antigen-specific IgE interacts with mast cells and eosinophils, triggers the release of histamine, leukotrienes and other substances that lead to the itching, sneezing and congestion of allergies - and the life threatening respiratory distress of asthma and anaphylactic shock.

Recommended Dilutions

FC 1:500 - 1:1000

Immunogen Information

Gene ID

Swiss Prot

Immunogen

Recombinant protein (or fragment). This information is considered to be commercially sensitive.

Synonyms

IgE; IGHE

Contact

 www.abclonal.com

Product Information

Source

Rabbit

Isotype

IgG

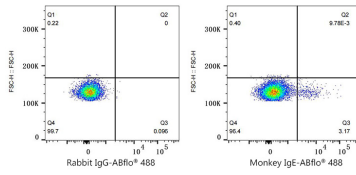
Purification

Storage

Store at -20°C. Avoid freeze / thaw cycles.

Buffer: PBS containing 50% glycerol and 0.05% BSA, preserved with proclin300 or sodium azide (as specified on the Certificate of Analysis), pH 7.3.

Validation Data



Flow cytometry: 1×10^6 Monkey PBMC were surface-stained with Rabbit IgG isotype control (AC042, 2 $\mu\text{g}/\text{mL}$, left) or Rabbit anti-Monkey IgE mAb (A27383, 2 $\mu\text{g}/\text{mL}$, right), followed by Alexa Fluor® 488 conjugated goat anti-rabbit pAb staining.