

AS002

Leader in Biomolecular Solutions for Life Science



HRP-conjugated Goat anti-Human IgG (H+L)

Catalog No.: AS002 **23 Publications**

Basic Information

Observed MW

25 kDa/55 kDa

Calculated MW

Category

Antibody

Applications

WB,IHC-P,ELISA

Cross-Reactivity

Human

Conjugate

HRP

Background

Secondary antibodies are affinity-purified antibodies which will work with target-specific primary antibody in the detection, sorting or purification of its specified target. Secondary antibodies offer increased versatility enabling users to use many detection systems (e.g. HRP, AP, fluorescence). They can also provide greater sensitivity through signal amplification as multiple secondary antibodies. Most commonly, secondary antibodies are generated by immunizing the host animal (different from host species of primary antibody) with a pooled population of normal immunoglobulins from the host species of primary antibody and can be further purified and modified (i.e. antibody fragmentation, label conjugation, etc.) to ensure well-characterized specificity to corresponding normal immunoglobulins.

Recommended Dilutions

WB 1:1000 - 1:10000

IHC-P 1:250 - 1:2500

ELISA Recommended starting concentration is 1 µg/mL. Please optimize the concentration based on your specific assay requirements. For high-ratio antibody dilutions ($\geq 1:10000$)

Immunogen Information

Gene ID **Swiss Prot**

Immunogen

This information is considered to be commercially sensitive.

Synonyms

Product Information

Source	Isotype	Purification
Goat	Horseradish peroxidase conjugated IgG	Affinity purification

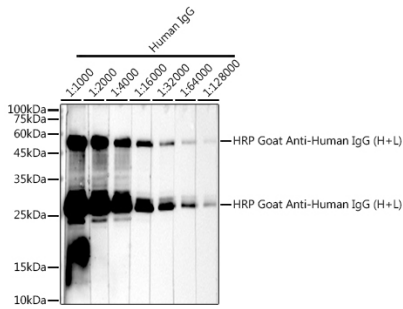
Storage

Store at -20°C. Avoid freeze / thaw cycles.
Buffer: 0.01M Sodium Phosphate, 0.25M NaCl, 15 mg/ml Bovine Serum Albumin (IgG-Free, Protease-Free), pH 7.6

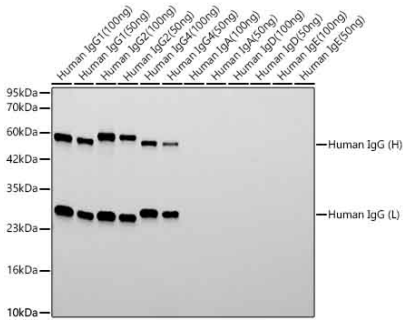
Contact

 www.abclonal.com

Validation Data



Western blot analysis of lysates from Human IgG, using HRP Goat Anti-Human IgG (H+L) (AS002) at 1:2000 dilution.
Lysates/proteins: 25µg per lane.
Blocking buffer: 3% nonfat dry milk in TBST.
Detection: ECL Basic Kit (RM00020).
Exposure time: 90s.



Western blot analysis of recombinant Human immunoglobulin using HRP Goat Anti-Human IgG (H+L) (AS002) at 1:10000 dilution incubated overnight at 4°C.
Lysates/proteins: 50ng - 100ng per lane.
Blocking buffer: 3% nonfat dry milk in TBST.
Detection: ECL Basic Kit (RM00020).
Exposure time: 20s.