

AC009

Leader in Biomolecular Solutions for Life Science



Actin (plant specific) Mouse mAb

Catalog No.: AC009 **98 Publications**

Basic Information

Observed MW

45 kDa

Calculated MW

45 kDa

Category

Monoclonal Antibody

Applications

WB,ELISA

Cross-Reactivity

Various Plants

CloneNo number

AMC0496

Background

Actins are highly conserved proteins that are involved in cell motility, structure, and integrity. This actin is a major constituent of the contractile apparatus and one of the two nonmuscle cytoskeletal actins.

Recommended Dilutions

WB 1:2000 - 1:10000

ELISA Recommended starting concentration is 1 µg/mL. Please optimize the concentration based on your specific assay requirements.

Immunogen Information

Gene ID **Swiss Prot**

Immunogen

Synthetic peptide. This information is considered to be commercially sensitive.

Synonyms

Contact

 www.abclonal.com

Product Information

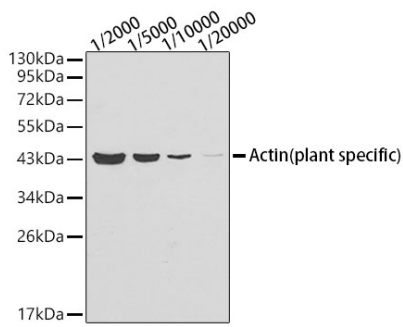
Source Mouse	Isotype IgG1	Purification Affinity purification
------------------------	------------------------	--

Storage

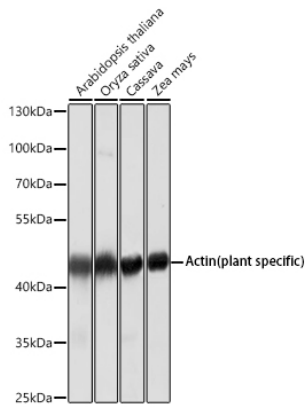
Store at -20°C. Avoid freeze / thaw cycles.

Buffer: PBS containing 50% glycerol and 1% BSA, preserved with proclin300 or sodium azide (as specified on the Certificate of Analysis), pH 7.3.

Validation Data



Western blot analysis of lysates from *Arabidopsis thaliana* tissue using Actin (plant specific) Mouse mAb (AC009) at 1:2000-1:20000 dilution.
Secondary antibody: HRP-conjugated Goat anti-Mouse IgG (H+L) (AS003) at 1:10000 dilution.
Lysates/proteins: 25 µg per lane.
Blocking buffer: 3% nonfat dry milk in TBST.



Western blot analysis of various lysates using Actin (plant specific) Mouse mAb (AC009) at 1:5000 dilution.
Secondary antibody: HRP-conjugated Goat anti-Mouse IgG (H+L) (AS003) at 1:10000 dilution.
Lysates/proteins: 25 µg per lane.
Blocking buffer: 3% nonfat dry milk in TBST.
Detection: ECL Basic Kit (RM00020).
Exposure time: 30 s.