

A1625

Leader in Biomolecular Solutions for Life Science



# RFC1 Rabbit pAb

Catalog No.: A1625 **1 Publications**

## Basic Information

### Observed MW

140kDa

### Calculated MW

128kDa

### Category

Polyclonal Antibody

### Applications

WB,IF/ICC,ELISA

### Cross-Reactivity

Human,Mouse,Rat

## Background

This gene encodes the large subunit of replication factor C, a five subunit DNA polymerase accessory protein, which is a DNA-dependent ATPase required for eukaryotic DNA replication and repair. The large subunit acts as an activator of DNA polymerases, binds to the 3' end of primers, and promotes coordinated synthesis of both strands. It may also have a role in telomere stability. Alternatively spliced transcript variants encoding different isoforms have been noted for this gene.

## Recommended Dilutions

**WB** 1:500 - 1:1000

**IF/ICC** 1:50 - 1:200

**ELISA** Recommended starting concentration is 1 µg/mL. Please optimize the concentration based on your specific assay requirements.

## Immunogen Information

### Gene ID

5981

### Swiss Prot

P35251

### Immunogen

Synthetic peptide. This information is considered to be commercially sensitive.

### Synonyms

A1; RFC; PO-GA; RECC1; CANVAS; MHCBBF; RFC140; RFC1

## Contact

 [www.abclonal.com](http://www.abclonal.com)

## Product Information

### Source

Rabbit

### Isotype

IgG

### Purification

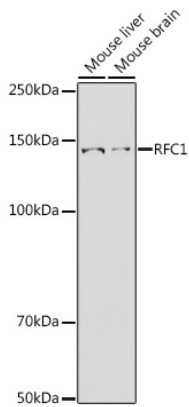
Affinity purification

### Storage

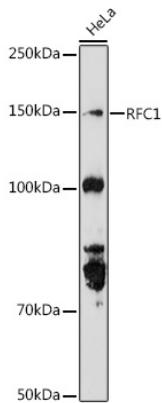
Store at -20°C. Avoid freeze / thaw cycles.

Buffer: PBS containing 50% glycerol, preserved with proclin300 or sodium azide (as specified on the Certificate of Analysis), pH 7.3.

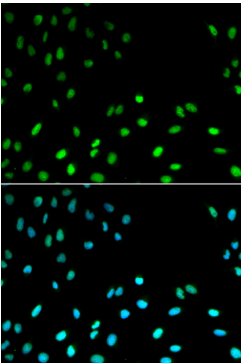
## Validation Data



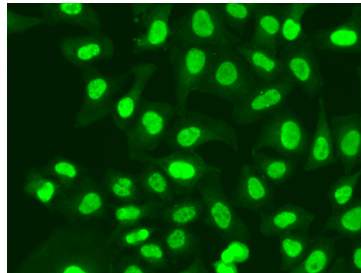
Western blot analysis of various lysates using RFC1 Rabbit pAb (A1625) at 1:1000 dilution.  
Secondary antibody: HRP-conjugated Goat anti-Rabbit IgG (H+L) (AS014) at 1:10000 dilution.  
Lysates/proteins: 25µg per lane.  
Blocking buffer: 3% nonfat dry milk in TBST.  
Detection: ECL Basic Kit (RM00020).  
Exposure time: 180s.



Western blot analysis of lysates from HeLa cells, using RFC1 Rabbit pAb (A1625) at 1:1000 dilution.  
Secondary antibody: HRP-conjugated Goat anti-Rabbit IgG (H+L) (AS014) at 1:10000 dilution.  
Lysates/proteins: 25µg per lane.  
Blocking buffer: 3% nonfat dry milk in TBST.  
Detection: ECL Basic Kit (RM00020).  
Exposure time: 180s.



Immunofluorescence analysis of MCF-7 cells using RFC1 Rabbit pAb (A1625). Secondary antibody: Cy3-conjugated Goat anti-Rabbit IgG (H+L) (AS007) at 1:500 dilution. Blue: DAPI for nuclear staining.



Immunofluorescence analysis of A549 cells using RFC1 Rabbit pAb (A1625). Secondary antibody: Cy3-conjugated Goat anti-Rabbit IgG (H+L) (AS007) at 1:500 dilution.