

## 1kb plus DNA Ladder

#Cat: NB-66-32341-250ul      Size: 250 µl

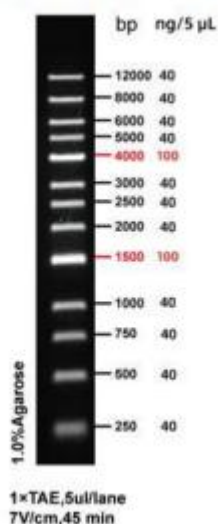
#Cat: NB-66-32341-500ul      Size: 500 µl

Cat/No.	Specification	Storage/shelflife
NB-66-32341-250ul	250 µl	-20°C/2years
NB-66-32341-500ul	500 µl	-20°C/2years

## Introduction

1 kb plus Ladder DNA Marker is composed of 13 DNA fragments with a length of 250 bp to 12,000 bp, dissolved in 1× Loading Buffer, and can be used for direct electrophoresis of 5-10 µl during use, which is very convenient to use. The indicator band was 4000 bp and 1500 bp, the indicator band concentration was 100 ng/5 µl, and the other bands were 40 ng/5 µl.

GoldBand 1kb DNA ladder



## Note

1. When the width of the sample well during electrophoresis is less than 5 mm, a clear band can be obtained by taking 5 µl Marker electrophoresis each time. If the sample hole is widened, the sampler volume of Marker must be increased appropriately.
2. For DNA electrophoresis, the purity of Agarose greatly affects the clarity of DNA bands. Therefore, the best quality Agarose should be used for electrophoresis. The recommended gel concentration is 1% to 2%.
3. When performing Agarose electrophoresis, the concentration of Agarose is closely related to the separation performance of DNA fragments. The greater the concentration of Agarose, the better the separation performance of short DNA; conversely, the smaller the concentration of Agarose, the more favorable for the separation of long DNA.