

RP01274LQ

Leader in Biomolecular Solutions for Life Science



www.abclonal.com

Recombinant SARS-CoV-2 papain-like protease Protein

Catalog No.: RP01274LQ **Recombinant**

Sequence Information

Species	Gene ID	Swiss Prot
<I>E. coli</I>	43740578	

Tags

N-His

Synonyms

PLPro;PL-PRO;pp1a;Papain-like Protease;Replicase polyprotein 1a;ORF1a polyprotein;Plpro;COVID-19

Product Information

Source	Purification
<I>E. coli</I>	≥ 90 % as determined by SDS-PAGE.

Endotoxin

< 1 EU/μg of the protein by LAL method.

Formulation

Supplied as a 0.22 μm filtered solution in 20mM Tris,20% Glycerol,10mM β-Me , pH7.5.Contact us for customized product form or formulation.

Reconstitution

Background

Basic Information

Description

Recombinant SARS-CoV-2(2019-nCoV) papain-like protease is produced by *E. coli* expression system. The target protein is expressed with sequence (Glu1564-Lys1878) of SARS-COV-2(2019-nCoV) papain-like protease (Accession #YP_009725299.1) fused with an initial Met,a 6×His tag at the N-terminus.

Bio-Activity

Shipping

The product is shipped at ambient temperature. Upon receipt, store it immediately at the temperature recommended below.

Operational Notes

For your safety and health, please wear a lab coat and disposable gloves for handling.

Storage

Store at -70°C. This product is stable at ≤ -70°C for up to 1 year from the date of receipt. For optimal storage, aliquot into smaller quantities after centrifugation and store at recommended temperature. Avoid repeated freeze-thaw cycles. Avoid repeated freeze/thaw cycles.

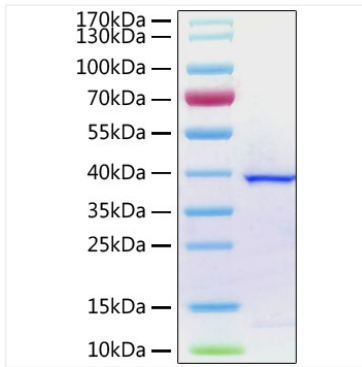
Contact



www.abclonal.com

* For your safety and health, please wear a lab coat and disposable gloves when handling.

Validation Data



Recombinant SARS-CoV-2 papain-like protease Protein was determined by SDS-PAGE under reducing conditions with Coomassie Blue.