

A13535

Leader in Biomolecular Solutions for Life Science



PSMA4 Rabbit pAb

Catalog No.: A13535

Basic Information

Observed MW

29kDa

Calculated MW

29kDa

Category

Polyclonal Antibody

Applications

WB,ELISA

Cross-Reactivity

Human,Mouse,Rat,Monkey

Background

This gene encodes a core alpha subunit of the 20S proteasome, which is a highly ordered ring-shaped structure composed of four rings of 28 non-identical subunits. Proteasomes cleave peptides in an ATP- and ubiquitin-dependent manner.

Recommended Dilutions

WB 1:500 - 1:2000

ELISA Recommended starting concentration is 1 µg/mL. Please optimize the concentration based on your specific assay requirements.

Immunogen Information

Gene ID

5685

Swiss Prot

P25789

Immunogen

Recombinant protein (or fragment). This information is considered to be commercially sensitive.

Synonyms

HC9; PSC9; HsT17706; PSMA4

Contact

 www.abclonal.com

Product Information

Source

Rabbit

Isotype

IgG

Purification

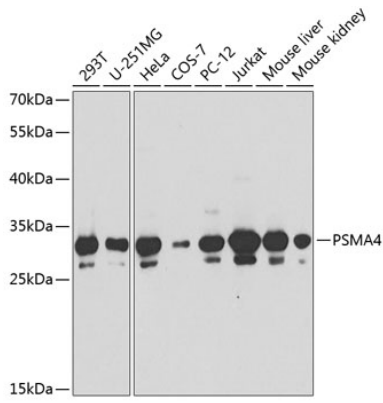
Affinity purification

Storage

Store at -20°C. Avoid freeze / thaw cycles.

Buffer: PBS containing 50% glycerol, preserved with proclin300 or sodium azide (as specified on the Certificate of Analysis), pH 7.3.

Validation Data



Western blot analysis of various lysates using PSMA4 Rabbit pAb (A13535) at 1:1000 dilution.

Secondary antibody: HRP-conjugated Goat anti-Rabbit IgG (H+L) (AS014) at 1:10000 dilution.

Lysates/proteins: 25µg per lane.

Blocking buffer: 3% nonfat dry milk in TBST.