

AP0450

Leader in Biomolecular Solutions for Life Science



# Phospho- $\alpha$ -Synuclein-S129 Rabbit pAb

Catalog No.: AP0450

## Basic Information

### Observed MW

20kDa

### Calculated MW

14kDa

### Category

Polyclonal Antibody

### Applications

WB,IF/ICC,ELISA

### Cross-Reactivity

Human,Mouse,Rat

## Background

Alpha-synuclein is a member of the synuclein family, which also includes beta- and gamma-synuclein. Synucleins are abundantly expressed in the brain and alpha- and beta-synuclein inhibit phospholipase D2 selectively. SNCA may serve to integrate presynaptic signaling and membrane trafficking. Defects in SNCA have been implicated in the pathogenesis of Parkinson disease. SNCA peptides are a major component of amyloid plaques in the brains of patients with Alzheimer's disease. Alternatively spliced transcripts encoding different isoforms have been identified for this gene.

## Recommended Dilutions

**WB** 1:500 - 1:2000

**IF/ICC** 1:100-1:500

**ELISA** Recommended starting concentration is 1  $\mu$ g/mL. Please optimize the concentration based on your specific assay requirements.

## Immunogen Information

### Gene ID

6622

### Swiss Prot

P37840

### Immunogen

Synthetic peptide. This information is considered to be commercially sensitive.

### Synonyms

PD1; NACP; PARK1; PARK4; Phospho- $\alpha$ -Synuclein-S129

## Contact

 [www.abclonal.com](http://www.abclonal.com)

## Product Information

### Source

Rabbit

### Isotype

IgG

### Purification

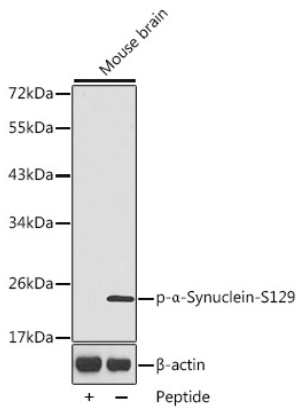
Affinity purification

### Storage

Store at  $-20^{\circ}\text{C}$ . Avoid freeze / thaw cycles.

Buffer: PBS, pH 7.3, containing 50% glycerol. Preserved with Proclin300 or sodium azide. May contain 0.05% BSA as specified on the Certificate of Analysis.

## Validation Data

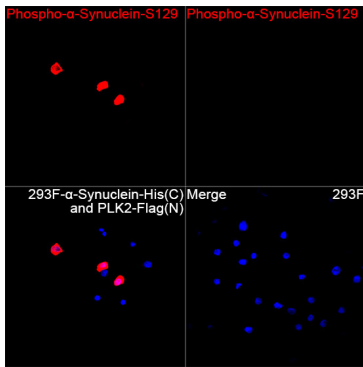


Western blot analysis of lysates from mouse brain tissue, using Phospho- $\alpha$ -Synuclein-S129 Rabbit pAb (AP0450).

Secondary antibody: HRP-conjugated Goat anti-Rabbit IgG (H+L) (AS014) at 1:10000 dilution.

Lysates/proteins: 25 $\mu$ g per lane.

Blocking buffer: 3% BSA.



Immunofluorescence analysis of 293F cells transfected with  $\alpha$ -Synuclein-His(C) and PLK2-Flag(N) using Phospho- $\alpha$ -Synuclein-S129 Rabbit pAb (AP0450) at a dilution of 1:100 (40x lens). Secondary antibody: Cy3-conjugated Goat anti-Rabbit IgG (H+L) (AS007) at 1:500 dilution Blue: DAPI for nuclear staining.