

RP01030

Leader in Biomolecular Solutions for Life Science



# Recombinant Human EGF Protein

Catalog No.: RP01030

Recombinant

2 Publications

## Sequence Information

Species	Gene ID	Swiss Prot
HEK293 cells	1950	P01133

### Tags

C-hFc&His

### Synonyms

EGF;HOMG4;URG

## Product Information

Source	Purification
HEK293 cells	≥ 90 % as determined by SDS-PAGE.

### Endotoxin

< 0.1 EU/μg of the protein by LAL method.

### Formulation

Lyophilized from a 0.22 μm filtered solution of PBS, pH 7.4. Contact us for customized product form or formulation.

### Reconstitution

Centrifuge the vial before opening. Reconstitute to a concentration of 0.1-0.5 mg/mL in sterile distilled water. Avoid vortex or vigorously pipetting the protein. For long term storage, it is recommended to add a carrier protein or stabilizer (e.g. 0.1% BSA, 5% HSA, 10% FBS or 5% Trehalose), and aliquot the reconstituted protein solution to minimize free-thaw cycles.

## Contact



[www.abclonal.com](http://www.abclonal.com)

## Background

Epidermal growth factor (EGF) is the founding member of the EGF family that also includes TGF-alpha, amphiregulin (AR), betacellulin (BTC), epiregulin (EPR), heparin binding EGF like growth factor (HB\_x005f)

## Basic Information

### Description

Recombinant Human EGF Protein is produced by HEK293 cells expression system. The target protein is expressed with sequence (Asn 971-Arg 1023) of human EGF (Accession #NP\_001954.2) fused with hFc, 6×His tag at the C-terminus.

### Bio-Activity

1.Recombinant Human EGF enhances EGF Receptor autophosphorylation in A431 cells.1-10 ng/mL of Recombinant Human EGF can effectively enhance EGF Receptor autophosphorylation.2.Immobilized Human EGFR at 5 μg/mL (100 μL/well) can bind Human EGF with a linear range of 7-25ng/mL.3.Recombinant Human EGF promotes the proliferation of BALB/c 3T3 mouse embryonic fibroblasts cells. The ED50 for this effect is typically 0.065-0.26 ng/mL, corresponding to a specific activity of 3.84×10<sup>6</sup>-1.54×10<sup>7</sup>units/mg.4.Measured in a cell proliferation assay using 4MBr-5 rhesus monkey epithelial cells. The ED50 for this effect is 1.23-4.93 ng/mL, corresponding to a specific activity of 2.03×10<sup>5</sup>~8.13×10<sup>5</sup> units/mg.

### Shipping

The product is shipped at ambient temperature. Upon receipt, store it immediately at the temperature recommended below.

### Operational Notes

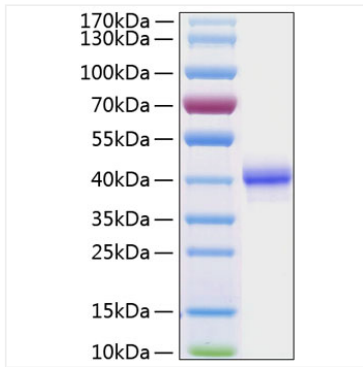
For your safety and health, please wear a lab coat and disposable gloves for handling.

### Storage

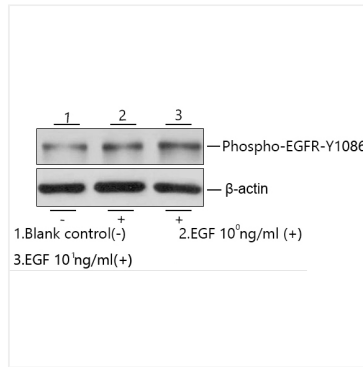
Store at -20°C.Store the lyophilized protein at -20°C to -80 °C up to 1 year from the date of receipt. After reconstitution, the protein solution is stable at -20°C for 3 months, at 2-8°C for up to 1 week. Avoid repeated freeze/thaw cycles.

\* For your safety and health, please wear a lab coat and disposable gloves when handling.

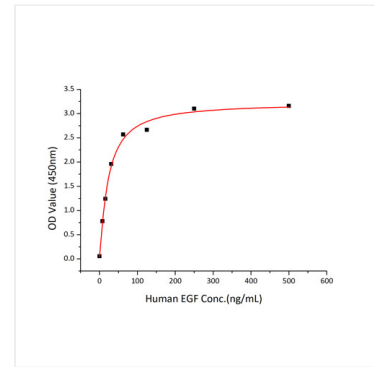
## Validation Data



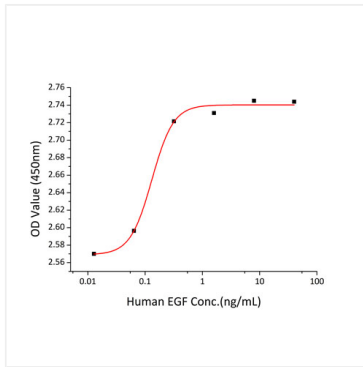
Recombinant Human EGF Protein was determined by SDS-PAGE under reducing conditions with Coomassie Blue.



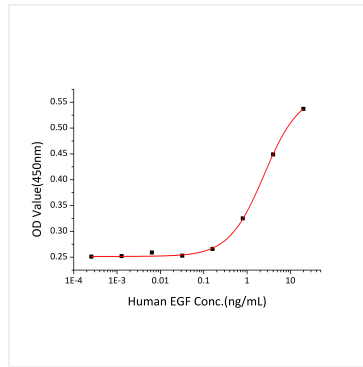
Recombinant Human EGF enhances EGF Receptor autophosphorylation in A431 cells. 1-10 ng/mL of Recombinant Human EGF can effectively enhance EGF Receptor autophosphorylation.



Immobilized Human EGFR at 5  $\mu\text{g/mL}$  (100  $\mu\text{L/well}$ ) can bind Human EGF with a linear range of 7-25ng/mL.



Recombinant Human EGF promotes the proliferation of BALB/c 3T3 mouse embryonic fibroblasts cells. The  $\text{ED}_{50}$  for this effect is typically 0.065-0.26 ng/mL, corresponding to a specific activity of  $3.84 \times 10^6$ - $1.54 \times 10^7$  units/mg.



Measured in a cell proliferation assay using 4MBr-5 rhesus monkey epithelial cells. The  $\text{ED}_{50}$  for this effect is 1.23-4.93 ng/mL, corresponding to a specific activity of  $2.03 \times 10^5$ - $8.13 \times 10^5$  units/mg.