

AS097

Leader in Biomolecular Solutions for Life Science



HRP-conjugated Rabbit anti-Goat IgG Fab mAb

Catalog No.: AS097

Basic Information

Observed MW

Calculated MW

Category

Monoclonal Antibody

Applications

WB,ELISA

Cross-Reactivity

Goat

CloneNo number

ARC57078-HRP

Conjugate

HRP

Recommended Dilutions

WB 1:500-1:64000

ELISA 1:5000-1:10000

Background

Immunogen Information

Gene ID

Swiss Prot

Immunogen

This information is considered to be commercially sensitive.

Synonyms

Contact

 www.abclonal.com

Product Information

Source

Rabbit

Isotype

IgG

Purification

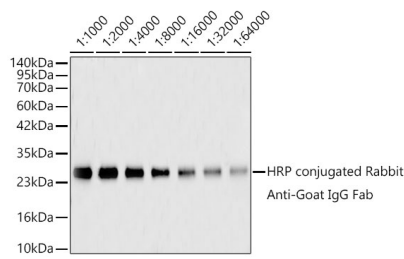
Affinity purification

Storage

Store at -20°C. Avoid freeze / thaw cycles.

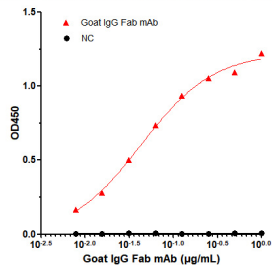
Buffer: PBS containing 50% glycerol and 0.05% BSA, preserved with proclin300 or sodium azide (as specified on the Certificate of Analysis), pH 7.3.

Validation Data



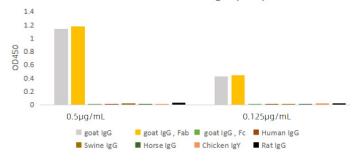
Western blot analysis of recombinant goat IgG Fab protein using HRP-conjugated Rabbit anti-Goat IgG Fab mAb(AS097) at 1:500-1:64000 dilution. Blot was incubated with the HRP conjugated antibody in the Blocking buffer (3% non-fat dry milk in TBST) at room temperature for 1 hour before detection using Enhanced chemiluminescence. Lysates/proteins: Lane 1: molecular weight marker; Lanes 2-9: 100ng goat IgG Fab recombinant Protein per lane. Detection: ECL Basic Kit (RM00020). Exposure time: 90s

Affinity of Rabbit anti-goat IgG Fab mAb, HRP conjugated



Dose response curve of HRP conjugated Rabbit Anti-Goat IgG Fab mAb measured by ELISA. 25 ng of Goat IgG Fab recombinant protein was coated in 384-well plate, blank wells without protein were used as negative control (NC). 25 µL of HRP conjugated Rabbit Anti-Goat IgG Fab mAb in a 2 fold serial dilution from 1 µg/mL to 7.8 pg/mL, incubation was performed at room temperature for 1 hour. EC50 value (4.27×10^{-2} µg/mL) were calculated using 4 parameter logistic regression.

Cross reactivity assessment of HRP conjugated Rabbit Anti-Goat IgG (Fab) mAb



Cross reactivity to various IgGs of HRP conjugated Rabbit Anti-Goat IgG Fab mAb was examined ELISA. 1 µg/mL of various immunoglobulins were coated to 384-well plate. Then the plate was blocked and incubated with 25 µL of HRP conjugated Rabbit Anti-Goat IgG Fab mAb, 0.5 µg/mL and 0.125 µg/mL at room temperature for 1 hour. The ELISA result demonstrated that Rabbit anti-goat Fab antibody has highly specific recognition of goat IgG (H+L) and Fab fragments, while no or minimal cross reactivity to goat IgG Fc, Human IgG, Swine IgG, Horse IgG, Chicken IgY, and Rat IgG.