

Product Description: CCKA antibody, human, C-term.
CCK1
Cholecystokinin type A receptor
Cholecystokinin type 1 receptor
G Protein-coupled receptor
Polyclonal antibody raised against the carboxy-terminus of the human CCKA receptor.

Product-No.: S10-9030-A-G

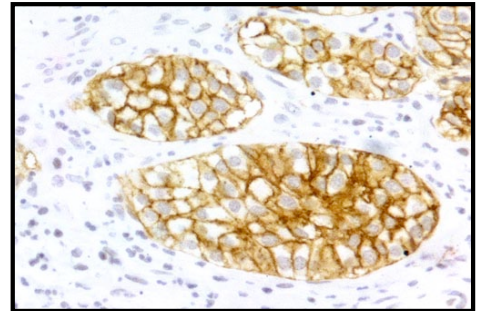
Immunogen: residues 409-428 coupled to KLH (NP_000721)
KLH- $\text{tgaslsrfsyshmsasvppq}$

Host: Rabbit

Form: IgG fraction supplied in PBS pH 7.4 containing 0.05% thimerosal as preservative
Antibodies were purified by peptide affinity chromatography

Quantity: 50 μg

Concentration: 0.1 mg/ml



CCKA receptor immunoreactivity in a human carcinoid tumor.

Applications: ICH (p), IC, W
W = Western blot (1 $\mu\text{g/ml}$)
IC = Immunocytochemistry (1 $\mu\text{g/ml}$)
ICH (p) = Immunohistochemistry of formalin-fixed, paraffin-embedded tissues (2 $\mu\text{g/ml}$)

Species cross-reactivity: human

Sensitivity: 50 ng

Storage: 4 $^{\circ}\text{C}$ short term
-20 $^{\circ}\text{C}$ long term