

AC021

Leader in Biomolecular Solutions for Life Science



β-Tubulin Mouse mAb

Catalog No.: AC021 **86 Publications**

Basic Information

Observed MW

50kDa

Calculated MW

50kDa

Category

Monoclonal Antibody

Applications

WB,IHC-P,IF/ICC,IP,ELISA

Cross-Reactivity

Human,Mouse,Rat,Hamster,Monkey,Goat,Chlamydomonas Reinhardtii

CloneNo number

AMC0498

Recommended Dilutions

| | |
|---------------|--|
| WB | 1:5000 - 1:10000 |
| IHC-P | 1:50 - 1:200 |
| IF/ICC | 1:50 - 1:200 |
| IP | 0.5ug-4ug antibody for 200ug-400ug extracts of whole cells |
| ELISA | Recommended starting concentration is 1 μg/mL. Please optimize the concentration based on your specific assay requirements. |

Contact

 www.abclonal.com

Background

This gene encodes a beta tubulin protein. This protein forms a dimer with alpha tubulin and acts as a structural component of microtubules. Mutations in this gene cause cortical dysplasia, complex, with other brain malformations 6. Alternative splicing results in multiple splice variants. There are multiple pseudogenes for this gene on chromosomes 1, 6, 7, 8, 9, and 13.

Immunogen Information

| | |
|----------------|-------------------|
| Gene ID | Swiss Prot |
| 203068 | P07437 |

Immunogen

Recombinant protein (or fragment). This information is considered to be commercially sensitive.

Synonyms

M40; TUBB1; TUBB5; CDCBM6; CSCSC1; OK/SW-cl.56; β-Tubulin

Product Information

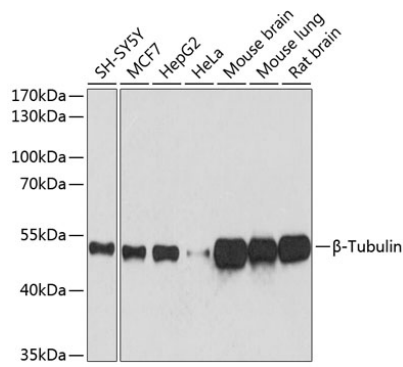
| | | |
|---------------|----------------|-----------------------|
| Source | Isotype | Purification |
| Mouse | IgG1 | Affinity purification |

Storage

Store at -20°C. Avoid freeze / thaw cycles.

Buffer: PBS containing 50% glycerol and 1% BSA, preserved with proclin300 or sodium azide (as specified on the Certificate of Analysis), pH 7.3.

Validation Data



Western blot analysis of various lysates using β -Tubulin Mouse mAb (AC021) at 1:5000 dilution.

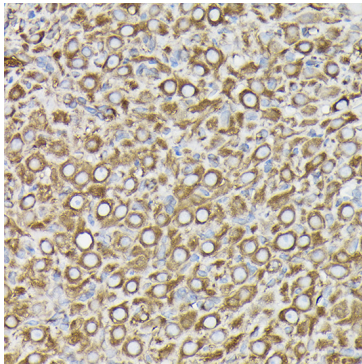
Secondary antibody: HRP-conjugated Goat anti-Mouse IgG (H+L) (AS003) at 1:10000 dilution.

Lysates/proteins: 25 μ g per lane.

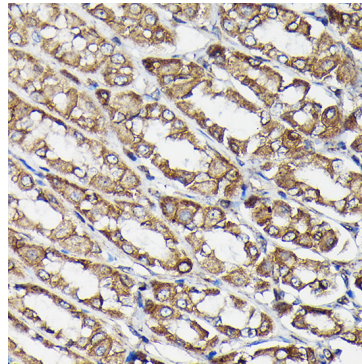
Blocking buffer: 3% nonfat dry milk in TBST.

Detection: ECL Basic Kit (RM00020).

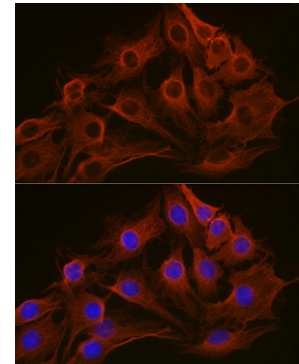
Exposure time: 10s.



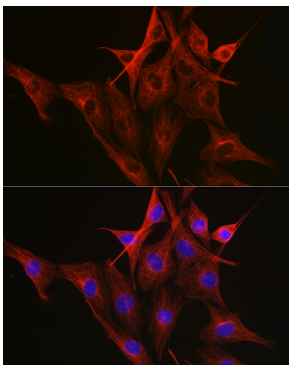
Immunohistochemistry analysis of paraffin-embedded Rat ovary using β -Tubulin Mouse mAb (AC021) at dilution of 1:100 (40x lens). High pressure antigen retrieval performed with 0.01M Citrate buffer (pH 6.0) prior to IHC staining.



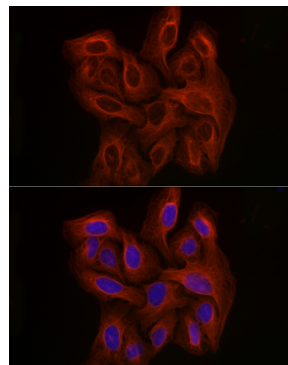
Immunohistochemistry analysis of paraffin-embedded Rat stomach using β -Tubulin Mouse mAb (AC021) at dilution of 1:100 (40x lens). High pressure antigen retrieval performed with 0.01M Citrate buffer (pH 6.0) prior to IHC staining.



Immunofluorescence analysis of C6 cells using β -Tubulin Mouse mAb (AC021) at dilution of 1:100 (40x lens). Blue: DAPI for nuclear staining.



Immunofluorescence analysis of NIH-3T3 cells using β -Tubulin Mouse mAb (AC021) at dilution of 1:100 (40x lens). Blue: DAPI for nuclear staining.



Immunofluorescence analysis of U-2 OS cells using β -Tubulin Mouse mAb (AC021) at dilution of 1:100 (40x lens). Blue: DAPI for nuclear staining.