

A20022

Leader in Biomolecular Solutions for Life Science



SARS-CoV-2 Spike S1 mAb

Catalog No.: A20022

6 Publications

Basic Information

Observed MW

110kDa

Calculated MW

Category

Monoclonal Antibody

Applications

WB,IF/ICC,ELISA

Cross-Reactivity

SARS-CoV-2

CloneNo number

ARC2373

Background

Severe acute respiratory syndrome coronavirus 2 (SARS-CoV-2) is an enveloped, positive-sense, single-stranded RNA virus that causes coronavirus disease 2019 (COVID-19). Virus particles include the RNA genetic material and structural proteins needed for invasion of host cells. Once inside the cell the infecting RNA is used to encode structural proteins that make up virus particles, nonstructural proteins that direct virus assembly, transcription, replication and host control and accessory proteins whose function has not been determined.~ The structural proteins of SARS-CoV-2 include the envelope protein (E), spike or surface glycoprotein (S), membrane protein (M) and the nucleocapsid protein (N). The spike glycoprotein is found on the outside of the virus particle and gives coronavirus viruses their crown-like appearance. This glycoprotein mediates attachment of the virus particle and entry into the host cell. S protein is an important target for vaccine development, antibody therapies and diagnostic antigen-based tests.

Recommended Dilutions

WB	1:2000 - 1:10000
IF/ICC	1:200 - 1:800
ELISA	1:1000 - 1:5000

Immunogen Information

Gene ID

43740568

Swiss Prot

Immunogen

Recombinant protein (or fragment).This information is considered to be commercially sensitive.

Synonyms

spike glycoprotein

Contact

 www.abclonal.com

Product Information

Source

Rabbit

Isotype

IgG

Purification

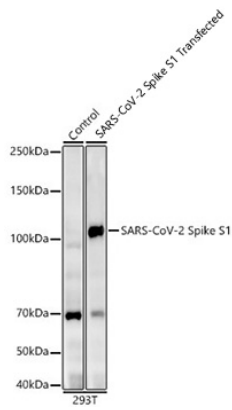
Affinity purification

Storage

Store at -20°C. Avoid freeze / thaw cycles.

Buffer: PBS containing 50% glycerol and 0.05% BSA, preserved with proclin300 or sodium azide (as specified on the Certificate of Analysis), pH 7.3.

Validation Data



Western blot analysis of lysates from wild type (WT) and 293T cells transfected with SARS-CoV-2 Spike S1 using SARS-CoV-2 Spike S1 mAb (A20022) at 1:10000 dilution. Secondary antibody: HRP-conjugated Goat anti-Rabbit IgG (H+L) (AS014) at 1:10000 dilution.

Lysates/proteins: 5 μ g per lane.

Blocking buffer: 3% nonfat dry milk in TBST.

Detection: ECL Enhanced Kit (RM00021).

Exposure time: 180 s.