

A2337

Leader in Biomolecular Solutions for Life Science



# SMYD4 Rabbit pAb

Catalog No.: A2337

## Basic Information

### Observed MW

90kDa

### Calculated MW

89kDa

### Category

Polyclonal Antibody

### Applications

WB,IF/ICC,IP,ELISA

### Cross-Reactivity

Human,Mouse

## Background

Predicted to enable metal ion binding activity and methyltransferase activity. Involved in heart development. Predicted to be located in cytoplasm and nucleus.

## Recommended Dilutions

**WB** 1:500 - 1:2000

**IF/ICC** 1:50 - 1:200

**IP** 0.5µg-4µg antibody for  
200µg-400µg extracts  
of whole cells

**ELISA** Recommended starting  
concentration is 1  
µg/mL. Please optimize  
the concentration  
based on your specific  
assay requirements.

## Contact

 [www.abclonal.com](http://www.abclonal.com)

## Immunogen Information

### Gene ID

114826

### Swiss Prot

Q8IYR2

### Immunogen

Recombinant protein (or fragment). This information is considered to be commercially sensitive.

### Synonyms

ZMYND21; SMYD4

## Product Information

### Source

Rabbit

### Isotype

IgG

### Purification

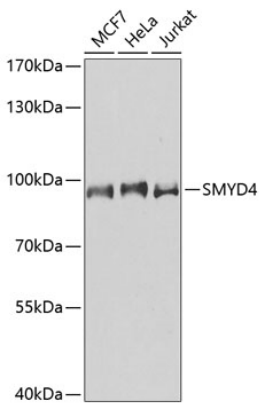
Affinity purification

### Storage

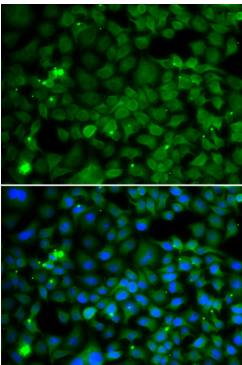
Store at -20°C. Avoid freeze / thaw cycles.

Buffer: PBS with 0.09% Sodium azide, 50% glycerol, pH7.3.

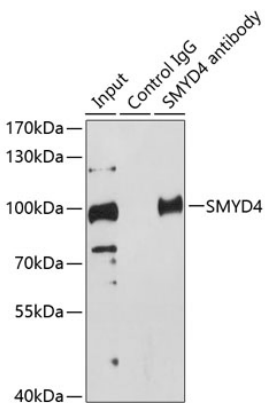
## Validation Data



Western blot analysis of various lysates using SMYD4 Rabbit pAb (A2337) at 1:1000 dilution.  
Secondary antibody: HRP-conjugated Goat anti-Rabbit IgG (H+L) (AS014) at 1:10000 dilution.  
Lysates/proteins: 25µg per lane.  
Blocking buffer: 3% nonfat dry milk in TBST.  
Detection: ECL Basic Kit (RM00020).  
Exposure time: 60s.



Immunofluorescence analysis of MCF-7 cells using SMYD4 Rabbit pAb (A2337). Secondary antibody: Cy3-conjugated Goat anti-Rabbit IgG (H+L) (AS007) at 1:500 dilution. Blue: DAPI for nuclear staining.



Immunoprecipitation analysis of 200 µg extracts of HeLa cells using 1 µg SMYD4 antibody (A2337). Western blot was performed from the immunoprecipitate using SMYD4 antibody (A2337) at a dilution of 1:500. \_\_\_Detection: ECL Enhanced Kit (RM00021).\_Exposure time: 20s.