

A11351

Leader in Biomolecular Solutions for Life Science



EGFR Rabbit pAb

Catalog No.: A11351 **42 Publications**

Basic Information

Observed MW

175kDa

Calculated MW

134kDa

Category

Polyclonal Antibody

Applications

WB,IHC-P,IF/ICC,IP,ELISA

Cross-Reactivity

Human,Mouse,Rat

Background

The protein encoded by this gene is a transmembrane glycoprotein that is a member of the protein kinase superfamily. This protein is a receptor for members of the epidermal growth factor family. EGFR is a cell surface protein that binds to epidermal growth factor, thus inducing receptor dimerization and tyrosine autophosphorylation leading to cell proliferation. Mutations in this gene are associated with lung cancer. EGFR is a component of the cytokine storm which contributes to a severe form of Coronavirus Disease 2019 (COVID-19) resulting from infection with severe acute respiratory syndrome coronavirus-2 (SARS-CoV-2).

Recommended Dilutions

| | |
|---------------|--------------------------------------------------------------------------------------------------------------------------------------------|
| WB | 1:1000 - 1:5000 |
| IHC-P | 1:50 - 1:200 |
| IF/ICC | 1:100 - 1:500 |
| IP | 0.5µg-4µg antibody for 200µg-400µg extracts of whole cells |
| ELISA | Recommended starting concentration is 1 µg/mL. Please optimize the concentration based on your specific assay requirements. |

Immunogen Information

| | |
|----------------|-------------------|
| Gene ID | Swiss Prot |
| 1956 | P00533 |

Immunogen

Recombinant protein (or fragment). This information is considered to be commercially sensitive.

Synonyms

ERBB; ERRP; HER1; mENA; ERBB1; PIG61; NISBD2; EGFR

Product Information

| | | |
|---------------|----------------|-----------------------|
| Source | Isotype | Purification |
| Rabbit | IgG | Affinity purification |

Storage

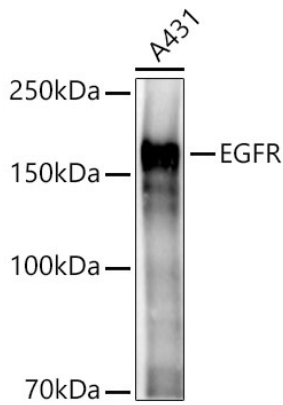
Store at -20°C. Avoid freeze / thaw cycles.

Buffer: PBS containing 50% glycerol, preserved with proclin300 or sodium azide (as specified on the Certificate of Analysis), pH 7.3.

Contact

 www.abclonal.com

Validation Data



Western blot analysis of lysates from A431 cells, using EGFR Rabbit pAb (A11351) at 1:2000 dilution.

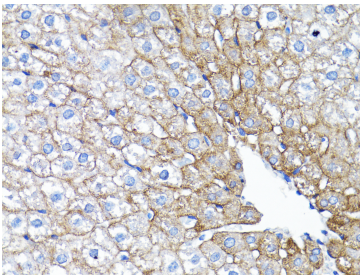
Secondary antibody: HRP-conjugated Goat anti-Rabbit IgG (H+L) (AS014) at 1:10000 dilution.

Lysates/proteins: 25µg per lane.

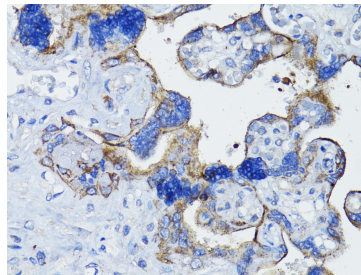
Blocking buffer: 3% nonfat dry milk in TBST.

Detection: ECL Basic Kit (RM00020).

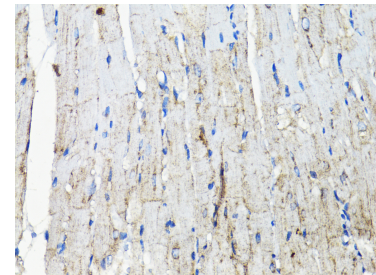
Exposure time: 3s.



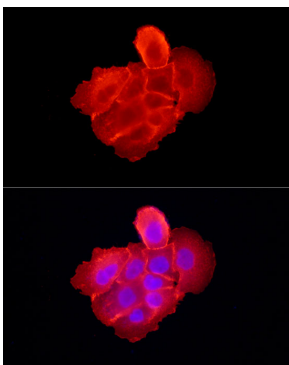
Immunohistochemistry analysis of paraffin-embedded Rat liver using EGFR Rabbit pAb (A11351) at dilution of 1:200 (40x lens). Microwave antigen retrieval performed with 0.01M PBS Buffer (pH 7.2) prior to IHC staining.



Immunohistochemistry analysis of paraffin-embedded Human placenta using EGFR Rabbit pAb (A11351) at dilution of 1:200 (40x lens). Microwave antigen retrieval performed with 0.01M PBS Buffer (pH 7.2) prior to IHC staining.

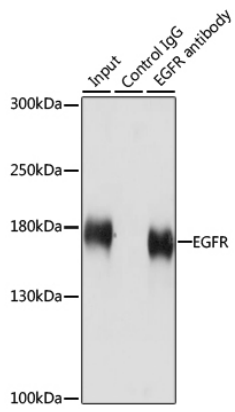


Immunohistochemistry analysis of paraffin-embedded Mouse heart using EGFR Rabbit pAb (A11351) at dilution of 1:200 (40x lens). Microwave antigen retrieval performed with 0.01M PBS Buffer (pH 7.2) prior to IHC staining.



Immunofluorescence analysis of A-431 cells using EGFR Rabbit pAb (A11351) at dilution of 1:300 (40x lens). Secondary antibody: Cy3-conjugated Goat anti-Rabbit IgG (H+L) (AS007) at 1:500 dilution. Blue: DAPI for nuclear staining.

Validation Data



Immunoprecipitation analysis of 200 μ g extracts of HeLa cells using 3 μ g EGFR antibody (A11351). Western blot was performed from the immunoprecipitate using EGFR antibody (A11351) at a dilution of 1:1000.