

AP0301

Leader in Biomolecular Solutions for Life Science



Phospho-EGFR-Y1068 Rabbit pAb

Catalog No.: AP0301

13 Publications

Basic Information

Observed MW

185kDa

Calculated MW

134kDa

Category

Polyclonal Antibody

Applications

WB,IP,ELISA

Cross-Reactivity

Human,Mouse

Background

The protein encoded by this gene is a transmembrane glycoprotein that is a member of the protein kinase superfamily. This protein is a receptor for members of the epidermal growth factor family. EGFR is a cell surface protein that binds to epidermal growth factor, thus inducing receptor dimerization and tyrosine autophosphorylation leading to cell proliferation. Mutations in this gene are associated with lung cancer. EGFR is a component of the cytokine storm which contributes to a severe form of Coronavirus Disease 2019 (COVID-19) resulting from infection with severe acute respiratory syndrome coronavirus-2 (SARS-CoV-2).

Recommended Dilutions

WB 1:1000 - 1:5000

IP 0.5µg-4µg antibody for
200µg-400µg extracts
of whole cells

ELISA Recommended starting
concentration is 1
µg/mL. Please optimize
the concentration
based on your specific
assay requirements.

Contact

 www.abclonal.com

Immunogen Information

Gene ID

1956

Swiss Prot

P00533

Immunogen

Synthetic peptide. This information is considered to be commercially sensitive.

Synonyms

ERBB; ERRP; HER1; mENA; ERBB1; PIG61; NISBD2; Phospho-EGFR-Y1068

Product Information

Source

Rabbit

Isotype

IgG

Purification

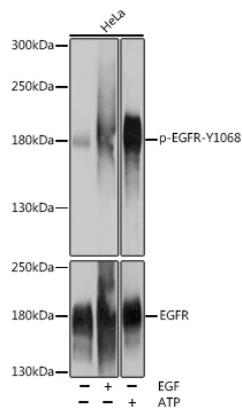
Affinity purification

Storage

Store at -20°C. Avoid freeze / thaw cycles.

Buffer: PBS, pH 7.3, containing 50% glycerol. Preserved with Proclin300 or sodium azide. May contain 0.05% BSA as specified on the Certificate of Analysis.

Validation Data



Western blot analysis of lysates from HeLa cells, using Phospho-EGFR-Y1068 Rabbit pAb (A11351). HeLa cells were treated with EGF (100 ng/mL) at 37°C for 30 minutes or treated with ATP (5 mM) at 30°C for 1 hour after serum-starvation overnight. Secondary antibody: HRP-conjugated Goat anti-Rabbit IgG (H+L) (AS014) at 1:10000 dilution.

Lysates/proteins: 25µg per lane.

Blocking buffer: 3% BSA.

Detection: ECL Basic Kit (RM00020).

Exposure time: 1s.