



Cyclin D1 (G1-Cyclin & Mantle Cell Marker); Clone CCND1/809 (Concentrate)

Availability/Contents:	<u>Item #</u>	<u>Volume</u>
	RA0426-C.1	0.1 ml
	RA0426-C.5	0.5 ml
	RA0426-C1	1 ml

Description:

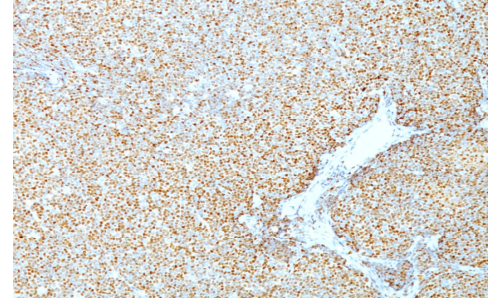
Species:	Mouse
Immunogen:	Recombinant human CCND1 protein
Clone:	CCND1/809
Isotype:	IgG2a, kappa
Entrez Gene ID:	595 (Human)
Hu Chromosome Loc.:	11q13.2
Synonyms:	B-cell CLL/lymphoma 1, B-cell leukemia 1, B-cell lymphoma 1 protein, BCL-1 oncogene, CCND1 protein, CCND1/FSTL3 fusion gene, CCND1/IGHG1 fusion gene CCND1/IGLC1 fusion gene, CCND1/PTH fusion gene, cD1, Cyl 1, G1/S-specific cyclin-D1, Parathyroid adenomatosis 1, PRAD1 oncogene.
Mol. Weight of Antigen:	36kDa
Format:	200µg/ml of Ab purified from Bioreactor Concentrate by Protein A/G. Prepared in 10mM PBS with 0.05% BSA & 0.05% azide.
Specificity:	This antibody recognizes a protein of 36kDa, identified as cyclin D1.
Background:	Cyclin D1, one of the key cell cycle regulators, is a putative proto-oncogene overexpressed in a wide variety of human neoplasms. This antibody neutralizes the activity of cyclin D1 <i>in vivo</i> . About 60% of mantle cell lymphomas (MCL) contain a t(11; 14)(q13; q32) translocation resulting in over-expression of cyclin D1. This antibody is useful in identifying mantle cell lymphomas (cyclin D1 positive) from CLL/SLL and follicular lymphomas (cyclin D1 negative). Occasionally, hairy cell leukemia and plasma cell myeloma weakly express Cyclin D1.
Species Reactivity:	Human. Others not known.
Positive Control:	T47D, ZR75, BT474, SKBR3, MCF-7, MDA-MB-453, HT29, Ramos, Jurkat or A431 cells. ~60% of mantle cell lymphomas and ~40% of breast carcinomas are positive.
Cellular Localization:	Nuclear
Titer/ Working Dilution:	Immunohistochemistry (Frozen and Formalin-fixed): 0.5-1 µg/ml Flow Cytometry: 0.5-1 µg/million cells Immunofluorescence: 1-2 µg/ml Western Blotting: 0.5-1 µg/ml Immunoprecipitation: 1-2 µg/500µg protein lysate
Microbiological State:	This product is not sterile.

Storage: 2° C  8° C



ScyTek Laboratories, Inc.
205 South 600 West
Logan, UT 84321
U.S.A.

Uses/Limitations: Not to be taken internally.
 For Research Use Only.
 This product is intended for qualitative immunohistochemistry with normal and neoplastic formalin-fixed, paraffin-embedded tissue sections, to be viewed by light microscopy.
 Do not use if reagent becomes cloudy.
 Do not use past expiration date.
 Non-Sterile.



Ordering Information and Current Pricing at www.scytek.com

Formalin-fixed, paraffin-embedded human mantle cell lymphoma stained with Cyclin D1; Clone CCND1/809.

Procedure:

1. **Tissue Section Pretreatment (Required):** Staining of formalin fixed, paraffin embedded tissue sections is significantly enhanced by pretreatment with Citrate Plus (ScyTek catalog# CPL500).
2. **Primary Antibody Incubation Time:** We suggest an incubation period of 30 minutes at room temperature. However, depending upon the fixation conditions and the staining system employed, optimal incubation should be determined by the user.
3. **Visualization:** For maximum staining intensity we recommend the “UltraTek HRP Anti-Polyvalent Lab Pack” (ScyTek catalog# UHP125, see IFU for instructions) combined with the “DAB Chromogen/Substrate Bulk Pack (High Contrast)” (ScyTek catalog# ACV500, see IFU for instructions).

Precautions:


Contains Sodium Azide as a preservative (0.09% w/v).
 Do not pipette by mouth.
 Avoid contact of reagents and specimens with skin and mucous membranes.
 Avoid microbial contamination of reagents or increased nonspecific staining may occur.
 This product contains no hazardous material at a reportable concentration according to U.S. 29 CFR 1910.1200, OSHA Hazardous Communication Standard and EC Directive 91/155/EC.


References:

1. Baldin V; Lukas J; Marcote MJ; Pagano M; Draetta G. Cyclin D1 is a nuclear protein required for cell cycle progression in G1. Genes and Development, 1993, 7(5):812-21.

Warranty:

No products or “Instructions For Use (IFU)” are to be construed as a recommendation for use in violation of any patents. We make no representations, warranties or assurances as to the accuracy or completeness of information provided on our IFU or website. Our warranty is limited to the actual price paid for the product. ScyTek Laboratories, Inc. is not liable for any property damage, personal injury, time or effort or economic loss caused by our products. Immunohistochemistry is a complex technique involving both histological and immunological detection methods. Tissue processing and handling prior to immunostaining can cause inconsistent results. Variations in fixation and embedding or the inherent nature of the tissue specimen may cause variations in results. Endogenous peroxidase activity or pseudoperoxidase activity in erythrocytes and endogenous biotin may cause non-specific staining depending on detection system used.

Storage: 2° C  8° C



ScyTek Laboratories, Inc.
 205 South 600 West
 Logan, UT 84321
 U.S.A.