

A23721

Leader in Biomolecular Solutions for Life Science



Claudin18.2 Rabbit mAb

Catalog No.: A23721

Recombinant

Basic Information

Observed MW

Refer to figures

Calculated MW

27kDa

Category

SMab Recombinant Monoclonal
Antibody

Applications

IHC-P,FC,ELISA

Cross-Reactivity

Human

CloneNo number

ARC60744

Background

This gene encodes a member of the claudin family. Claudins are integral membrane proteins and components of tight junction strands. Tight junction strands serve as a physical barrier to prevent solutes and water from passing freely through the paracellular space between epithelial or endothelial cell sheets, and also play critical roles in maintaining cell polarity and signal transductions. This gene is upregulated in patients with ulcerative colitis and highly overexpressed in infiltrating ductal adenocarcinomas. PKC/MAPK/AP-1 (protein kinase C/mitogen-activated protein kinase/activator protein-1) dependent pathway regulates the expression of this gene in gastric cells. Alternatively spliced transcript variants encoding different isoforms have been identified.

Recommended Dilutions

IHC-P 1:50 - 1:200

FC 1:500 - 1:1000

ELISA Recommended starting concentration is 1 µg/mL. Please optimize the concentration based on your specific assay requirements.

Immunogen Information

Gene ID

51208

Swiss Prot

P56856-2

Immunogen

Recombinant protein of human Claudin18.2.

Synonyms

SFTA5; SFTPJ; Claudin18.2

Contact



www.abclonal.com

Product Information

Source

Rabbit

Isotype

IgG

Purification

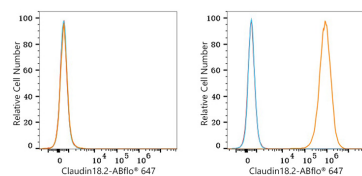
Affinity purification

Storage

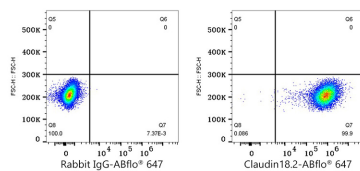
Store at -20°C. Avoid freeze / thaw cycles.

Buffer: PBS with 0.05% proclin300,0.05% BSA,50% glycerol,pH7.3.

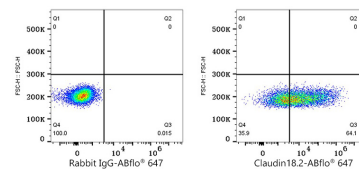
Validation Data



Flow cytometry: 1×10^6 CHO cells (negative control, left) and CHO (Transfection, right) cells were surface-stained with Claudin18.2 Rabbit mAb (A23721, 2 $\mu\text{g/mL}$, orange line) or Rabbit IgG isotype control (AC042, 2 $\mu\text{g/mL}$, blue line), followed by Alexa Fluor® 647 conjugated goat anti-rabbit pAb staining. Non-fluorescently stained cells were used as blank control (red line).



Flow cytometry: 1×10^6 CHO (Transfection) cells were surface-stained with Rabbit IgG isotype control (AC042, 2 $\mu\text{g/mL}$, left) or Claudin18.2 Rabbit mAb (A23721, 2 $\mu\text{g/mL}$, right), followed by Alexa Fluor® 647 conjugated goat anti-rabbit pAb staining.



Flow cytometry: 1×10^6 NUGC-4 cells were surface-stained with Rabbit IgG isotype control (AC042, 2 $\mu\text{g/mL}$, left) or Claudin18.2 Rabbit mAb (A23721, 2 $\mu\text{g/mL}$, right), followed by Alexa Fluor® 647 conjugated goat anti-rabbit pAb staining.