

Goat Anti-Rabbit IgG H&L antibody {HRP}

#Cat: NB-22-83480-100 Size: 100 µl

#Cat: NB-22-83480-200 Size: 200 µl

General Information

Product Type Secondary antibodies

Short Description

Application WB/DB/IHC-P/ELISA

Host/Source Goat

Reactivity Rabbit

Product Properties

Clonality Polyclonal

Clone ID

Concentration Lot specific

Conjugation HRP

Purification Affinity purification

Dilution Range WB 1:2000-1:10000

DB 1:2000-1:10000

IHC-P 1:50-1:200

ELISA 1:5000-1:10000

Formulation PBS with 0.75% BSA, 50% Glycerol, pH 7.3.

Isotype IgG

Storage Instruction Store at -20°C for up to 1 year from the date of receipt, and avoid repeat freeze-thaw cycles.

Target Information

Gene ID

Gene Symbol

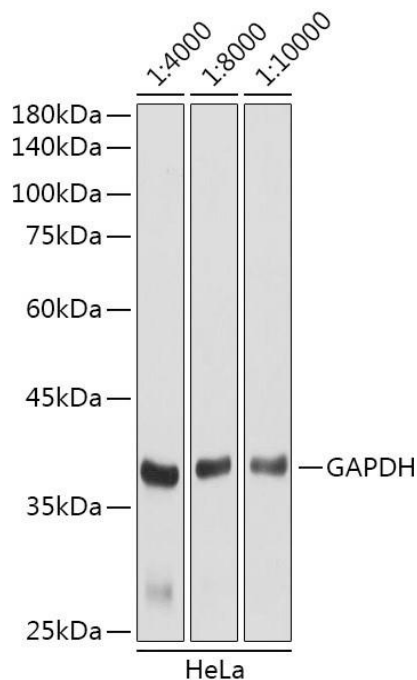
Uniprot ID

Immunogen

Immunogen Region

Specificity Rabbit IgG

Immunogen Sequence



Western blot analysis of extracts of HeLa cells, using GAPDH (NB-22-72888) antibody as the primary antibody at dilution of 1:80000. Secondary antibody: using HRP Goat Anti-rabbit IgG (H+L) antibody (NB-22-83480) at 1:4000-1:10000 dilution.

Lysates/proteins: 25 μ g per lane. Blocking buffer: 3% non-fat dry milk in TBST. Detection: ECL Basic Kit. Exposure time: 3s.

This product is suitable for in-vitro studies under the RESEARCH USE ONLY [RUO] licence.
This product must not be used as for diagnostic or other medical purposes.