

AS071

Leader in Biomolecular Solutions for Life Science



Goat Anti-Mouse IgG (H+L)

Catalog No.: AS071 **12 Publications**

Basic Information

Observed MW

25kDa(Light chain),55kDa(Heavy chain)//25kDa(Light chain),55kDa(Heavy chain)

Calculated MW

Category

Secondary Antibody

Applications

WB,ELISA,CUT&Tag

Cross-Reactivity

Mouse

Background

Secondary antibodies are affinity-purified antibodies which will work with target-specific primary antibody in the detection, sorting or purification of its specified target. Secondary antibodies offer increased versatility enabling users to use many detection systems (e.g. HRP, AP, fluorescence). They can also provide greater sensitivity through signal amplification as multiple secondary antibodies. Most commonly, secondary antibodies are generated by immunizing the host animal (different from host species of primary antibody) with a pooled population of normal immunoglobulins from the host species of primary antibody and can be further purified and modified (i.e. antibody fragmentation, label conjugation, etc.) to ensure well-characterized specificity to corresponding normal immunoglobulins.

Recommended Dilutions

WB 1:1000 - 1:5000

ELISA Recommended starting concentration is 1 µg/mL. Please optimize the concentration based on your specific assay requirements.

CUT&Tag 1:100

Contact

 www.abclonal.com

Immunogen Information

Gene ID **Swiss Prot**

Immunogen

This information is considered to be commercially sensitive.

Synonyms

Product Information

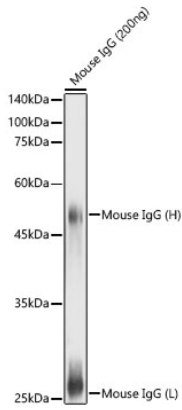
Source	Isotype	Purification
Goat	IgG	Affinity purification

Storage

Store at -20°C. Avoid freeze / thaw cycles.

Buffer: PBS containing 50% glycerol, preserved with proclin300 or sodium azide (as specified on the Certificate of Analysis), pH 7.3.

Validation Data



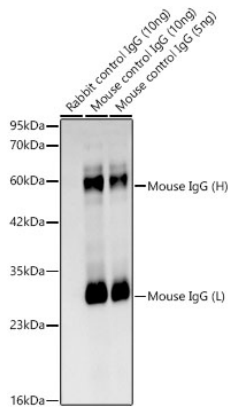
Western blot analysis of lysates from Mouse IgG using Goat Anti-Mouse IgG (H+L) (AS071) at 1:1000 dilution.

Lysates/proteins: 200ng per lane.

Blocking buffer: 3% nonfat dry milk in TBST.

Detection: ECL Basic Kit (RM00020).

Exposure time: 1s.



Western blot analysis of recombinant Mouse and Rat control IgG Protein using Goat Anti-Mouse IgG (H+L) (AS071) at 1:1000 dilution.

Secondary antibody: HRP Donkey Anti-Goat IgG (H+L) (AS031) at 1:5000 dilution.

Lysates/proteins: 10 ng/5ng per lane.

Blocking buffer: 3% nonfat dry milk in TBST.

Detection: ECL Basic Kit (RM00020).

Exposure time: 45s.