

A23224

Leader in Biomolecular Solutions for Life Science



[KD Validated] CD90/Thy1 Rabbit mAb

Catalog No.: A23224 **Recombinant**

Basic Information

Observed MW

22-30kDa

Calculated MW

18kDa

Category

Monoclonal Antibody

Applications

WB,FC,ELISA

Cross-Reactivity

Human

CloneNo number

ARC55647

Recommended Dilutions

WB 1:2000 - 1:20000

FC 1:50 - 1:200

ELISA Recommended starting concentration is 1 µg/mL. Please optimize the concentration based on your specific assay requirements.

Contact

 www.abclonal.com

Background

This gene encodes a cell surface glycoprotein and member of the immunoglobulin superfamily of proteins. The encoded protein is involved in cell adhesion and cell communication in numerous cell types, but particularly in cells of the immune and nervous systems. The encoded protein is widely used as a marker for hematopoietic stem cells. This gene may function as a tumor suppressor in nasopharyngeal carcinoma. Alternative splicing results in multiple transcript variants.

Immunogen Information

Gene ID

7070

Swiss Prot

P04216

Immunogen

Recombinant protein (or fragment). This information is considered to be commercially sensitive.

Synonyms

CD90; CDw90; [KO/KD Validated] CD90/Thy1

Product Information

Source

Rabbit

Isotype

IgG

Purification

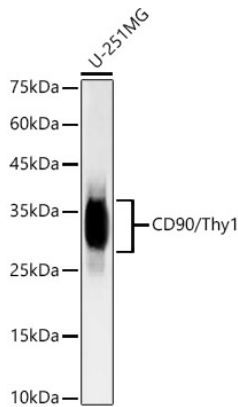
Affinity purification

Storage

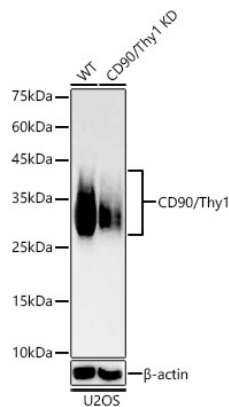
Store at -20°C. Avoid freeze / thaw cycles.

Buffer: PBS containing 50% glycerol and 0.05% BSA, preserved with proclin300 or sodium azide (as specified on the Certificate of Analysis), pH 7.3.

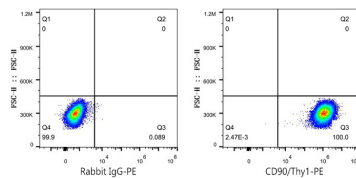
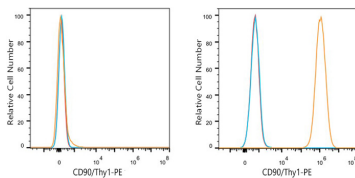
Validation Data



Western blot analysis of lysates from U-251 MG cells using [KD Validated] CD90/Thy1 Rabbit mAb (A23224) at 1:20000 dilution.
 Secondary antibody: HRP-conjugated Goat anti-Rabbit IgG (H+L) (AS014) at 1:10000 dilution.
 Lysates/proteins: 25µg per lane.
 Blocking buffer: 3% nonfat dry milk in TBST.
 Detection: ECL Basic Kit (RM00020).
 Exposure time: 180s.



Western blot analysis of lysates from wild type(WT) and CD90/Thy1 knockdown (KD) U-2 OS cells using [KD Validated] CD90/Thy1 Rabbit mAb (A23224) at 1:20000 dilution.
 Secondary antibody: HRP-conjugated Goat anti-Rabbit IgG (H+L) (AS014) at 1:10000 dilution.
 Lysates/proteins: 25µg per lane.
 Blocking buffer: 3% nonfat dry milk in TBST.
 Detection: ECL Basic Kit (RM00020).
 Exposure time: 180s.



Flow cytometry: 1×10^6 K-562 cells (negative control, left) and U-251 MG cells (right) were surface-stained with [KD Validated] CD90/Thy1 Rabbit mAb (A23224, 2 µg/mL, orange line) or PE Rabbit IgG isotype control (A24172, 5 µl/Test, blue line), followed by PE Donkey anti-rabbit Antibody staining. Non-fluorescently stained cells were used as blank control (red line).

Flow cytometry: 1×10^6 U-251 MG cells were surface-stained with PE Rabbit IgG isotype control (A24172, 5 µl/Test, left) or [KD Validated] CD90/Thy1 Rabbit mAb (A23224, 2 µg/mL, right).