

AS054

Leader in Biomolecular Solutions for Life Science



# ABflo® 594-conjugated Goat anti-Mouse IgG (H+L)

Catalog No.: AS054

35 Publications

## Basic Information

### Observed MW

Refer to figures

### Calculated MW

### Category

Secondary Antibody

### Applications

IF/ICC,FC

### Cross-Reactivity

Mouse

### Conjugate

ABflo® 594. Ex:588nm. Em:604nm.

## Background

Secondary antibodies are affinity-purified antibodies which will work with target-specific primary antibody in the detection, sorting or purification of its specified target. Secondary antibodies offer increased versatility enabling users to use many detection systems (e.g. HRP, AP, fluorescence). They can also provide greater sensitivity through signal amplification as multiple secondary antibodies. Most commonly, secondary antibodies are generated by immunizing the host animal (different from host species of primary antibody) with a pooled population of normal immunoglobulins from the host species of primary antibody and can be further purified and modified (i.e. antibody fragmentation, label conjugation, etc.) to ensure well-characterized specificity to corresponding normal immunoglobulins.

## Recommended Dilutions

IF/ICC 1:50 - 1:200

FC 1:100 - 1:500

## Immunogen Information

Gene ID

Swiss Prot

### Immunogen

This information is considered to be commercially sensitive.

### Synonyms

## Contact

 [www.abclonal.com](http://www.abclonal.com)

## Product Information

Source

Goat

Isotype

IgG

Purification

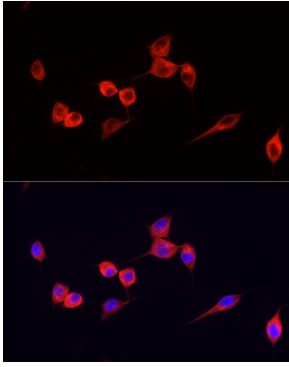
Affinity purification

### Storage

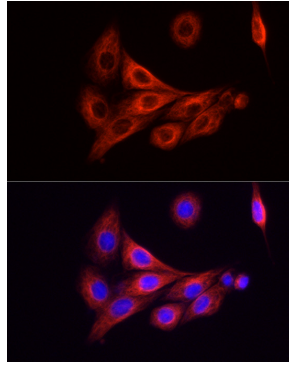
Store at -20°C. Avoid freeze / thaw cycles.

Buffer: PBS containing 50% glycerol and 1% BSA, preserved with proclin300 or sodium azide (as specified on the Certificate of Analysis), pH 7.3.

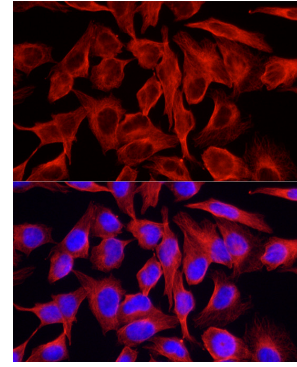
## Validation Data



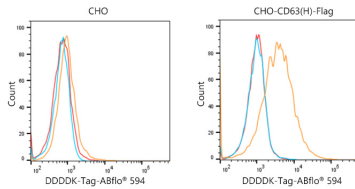
Immunofluorescence analysis of NIH/3T3 cells using ABflo® 594-conjugated Goat Anti-Mouse IgG (H+L) antibody (AS054) at dilution of 1:200 (40x lens). Blue: DAPI for nuclear staining.



Immunofluorescence analysis of PC-12 cells using ABflo® 594-conjugated Goat Anti-Mouse IgG (H+L) antibody (AS054) at dilution of 1:200 (40x lens). Blue: DAPI for nuclear staining.



Immunofluorescence analysis of HeLa cells using ABflo® 594-conjugated Goat Anti-Mouse IgG (H+L) antibody (AS054) at dilution of 1:200 (40x lens). Blue: DAPI for nuclear staining.



Flow cytometric analysis of Positive antibody (AE005) (2.5µg/mL) in various cells (orange) compare to Mouse isotype control (blue) and non-staining control (Red).The secondary antibody used was ABflo® 594-conjugated Goat Anti-Mouse IgG (H+L) (AS054) at 1:100.