



# Retinol Binding Protein-1 (RBP1); Clone RBP/872 (Concentrate)

<b>Availability/Contents:</b>	<u>Item #</u>	<u>Volume</u>
	RA0447-C.1	0.1 ml
	RA0447-C.5	0.5 ml
	RA0447-C1	1 ml

**Description:**

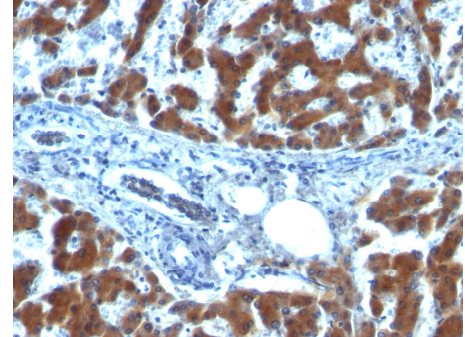
Species:	Mouse
Immunogen:	Recombinant human retinol binding protein-1 (RBP1)
Clone:	RBP/872
Isotype:	IgG1, kappa
Entrez Gene ID:	5947, 5948, 5950 (Human); 19659 (Mouse); 25056 (Rat)
Hu Chromosome Loc.:	10q23.33
Synonyms:	Cellular retinol-binding protein I, CRBP1, CRBP2, RBP1, RBP2, RBP4, RBPC, Retinol binding protein 1, Retinol binding protein 1 cellular, Retinol binding protein 2 cellular, Retinol binding protein 4 plasma.
Mol. Weight of Antigen:	21-25kDa
Format:	200µg/ml of Ab purified from Bioreactor Concentrate by Protein A/G. Prepared in 10mM PBS with 0.05% BSA & 0.05% azide.
Specificity:	This antibody recognizes a protein of 21kDa-25kDa, identified as retinol binding protein-1 (RBP1).
Background:	The RBP1 protein belongs to the lipocalin family and is the specific carrier for retinol (vitamin A alcohol) in the blood. It delivers retinol from the liver stores to the peripheral tissues. In plasma, the RBP-retinol complex interacts with transthyretin, which prevents its loss by filtration through the kidney glomeruli. A deficiency of vitamin A blocks secretion of the binding protein post-translationally and results in defective delivery and supply to the epidermal cells.
Species Reactivity:	Human, Monkey, Goat, Rabbit, Rat, and Mouse. Others not tested.
Positive Control:	Liver
Cellular Localization:	Cytoplasmic
Titer/ Working Dilution:	Immunohistochemistry (Frozen and Formalin-fixed): 0.5-1 µg/ml Immunofluorescence: 1-2 µg/ml Western Blotting: 0.5-1 µg/ml Immunoprecipitation: 1-2 µg/500µg protein lysate
Microbiological State:	This product is not sterile.

Storage: 2° C  8° C



ScyTek Laboratories, Inc.  
 205 South 600 West  
 Logan, UT 84321  
 U.S.A.

**Uses/Limitations:** Not to be taken internally.  
For Research Use Only.  
This product is intended for qualitative immunohistochemistry with normal and neoplastic formalin-fixed, paraffin-embedded tissue sections, to be viewed by light microscopy.  
Do not use if reagent becomes cloudy.  
Do not use past expiration date.  
Non-Sterile.



Formalin-fixed, paraffin-embedded human hepatocellular carcinoma stained with RBP1; Clone RBP/872.

**Ordering Information and Current Pricing at [www.scytek.com](http://www.scytek.com)**

**Procedure:**

1. **Tissue Section Pretreatment (Required):** Staining of formalin fixed, paraffin embedded tissue sections is significantly enhanced by pretreatment with Citrate Plus (ScyTek catalog# CPL500).
2. **Primary Antibody Incubation Time:** We suggest an incubation period of 30 minutes at room temperature. However, depending upon the fixation conditions and the staining system employed, optimal incubation should be determined by the user.
3. **Visualization:** For maximum staining intensity we recommend the “UltraTek HRP Anti-Polyvalent Lab Pack” (ScyTek catalog# UHP125, see IFU for instructions) combined with the “DAB Chromogen/Substrate Bulk Pack (High Contrast)” (ScyTek catalog# ACV500, see IFU for instructions).


**Precautions:** Contains Sodium Azide as a preservative (0.09% w/v).  
Do not pipette by mouth.  
Avoid contact of reagents and specimens with skin and mucous membranes.  
Avoid microbial contamination of reagents or increased nonspecific staining may occur.  
This product contains no hazardous material at a reportable concentration according to U.S. 29 CFR 1910.1200, OSHA Hazardous Communication Standard and EC Directive 91/155/EC.


**References:**

1. Naylor, H.M., et al. 1999. The structure of human retinol-binding protein (RBP) with its carrier protein transthyretin reveals an interaction with the carboxy-terminus of RBP. *Biochemistry* 38: 2647-2653.

**Warranty:**

No products or “Instructions For Use (IFU)” are to be construed as a recommendation for use in violation of any patents. We make no representations, warranties or assurances as to the accuracy or completeness of information provided on our IFU or website. Our warranty is limited to the actual price paid for the product. ScyTek Laboratories, Inc. is not liable for any property damage, personal injury, time or effort or economic loss caused by our products. Immunohistochemistry is a complex technique involving both histological and immunological detection methods. Tissue processing and handling prior to immunostaining can cause inconsistent results. Variations in fixation and embedding or the inherent nature of the tissue specimen may cause variations in results. Endogenous peroxidase activity or pseudoperoxidase activity in erythrocytes and endogenous biotin may cause non-specific staining depending on detection system used.

Storage: 2° C  8° C



ScyTek Laboratories, Inc.  
205 South 600 West  
Logan, UT 84321  
U.S.A.