

Anti-hPL antibody

#Cat: NB-22-52925-1 Size: 1ml
#Cat: NB-22-52925-7 Size: 7ml

GENERAL INFORMATION

Product Type Primary antibodies
Short Description Rabbit polyclonal antibody anti-hPL is suitable for use in Immunohistochemistry research applications.

Applications IHC-P
Host/Source Rabbit
Reactivity Human

PRODUCT PROPERTIES

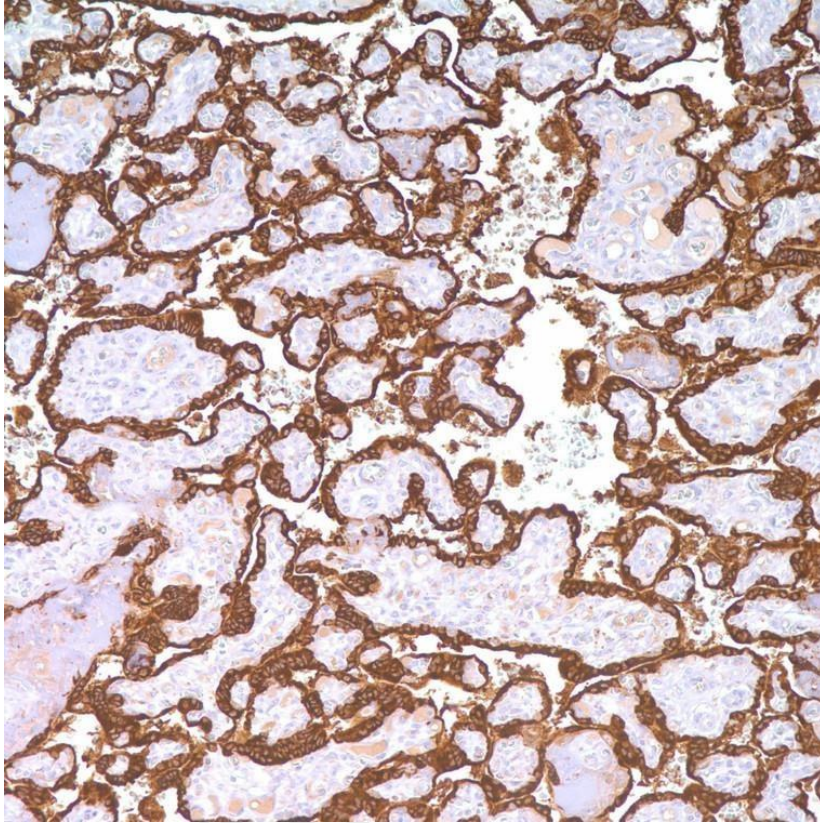
Clonality Polyclonal
Clone ID
Concentration
Conjugation Unconjugated
Purification
Dilution Range IHC-P (1:50-1:200)
Formulation Tris Buffer, pH 7.3-7.7, containing 1% BSA and <0.1% Sodium Azide
Isotype
Storage Instruction Store at 2-8°C upon receipt.

TARGET INFORMATION

Gene ID 3956
Gene Symbol LGALS1
Uniprot ID LEG1_HUMAN
Immunogen Synthesized peptide derived from part region of human protein
Immunogen Region Specificity A4GALT polyclonal antibody (Lactosylceramide 4- Alpha-Galactosyltransferase) binds to endogenous Lactosylceramide 4-AlphaGalactosyltransferase.

Immunogen Sequence

This product is suitable for in-vitro studies under the RESEARCH USE ONLY [RUO] licence. This product must not be used as for diagnostic or other medical purposes.



For research only