

**LRP4 (Extracellular) Antibody**  
**LRP4 Antibody, Clone S207-27**  
**Catalog # ASM10252****Specification**

---

**LRP4 (Extracellular) Antibody - Product Information**

Application	WB
Primary Accession	<a href="#">Q8VI56</a>
Other Accession	<a href="#">NP_766256.3</a>
Host	Mouse
Isotype	IgG2A
Reactivity	Human, Mouse, Rat
Clonality	Monoclonal
Format	ATTO 390

**Description**

Mouse Anti-Mouse LRP4 (Extracellular) Monoclonal IgG2A

**Target/Specificity**

Detects the extracellular domain of LRP4 ~215kDa. Degradation product can be seen at ~150kDa.

**Other Names**

Corin Antibody, KIAA0816 Antibody, LDLR Antibody, LDLR dan Antibody, Low density lipoprotein receptor related protein 4 Antibody, LRP-4 Antibody, LRP10 Antibody, MEGF7 Antibody, Multiple epidermal growth factor like domains 7 Antibody

**Immunogen**

Fusion protein amino acids 26- 350 (extracellular N-terminus) of mouse LTP4

**Purification**

Protein G Purified

Storage **-20°C**

**Storage Buffer**

PBS pH7.4, 50% glycerol, 0.09% sodium azide

Shipping Temperature

**Blue Ice or 4°C**

**Certificate of Analysis**

1 µg/ml of SMC-418 was sufficient for detection of LRP4 in 20 µg of rat brain lysate by colorimetric immunoblot analysis using Goat anti-mouse IgG:HRP as the secondary antibody.

**Cellular Localization**

Membrane

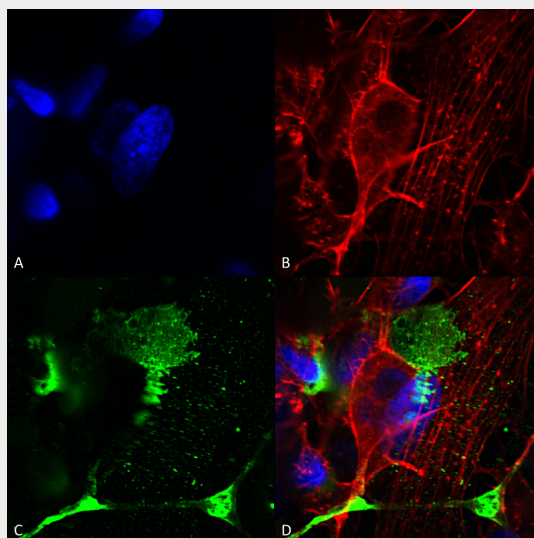
**LRP4 (Extracellular) Antibody - Protocols**

Provided below are standard protocols that you may find useful for product applications.

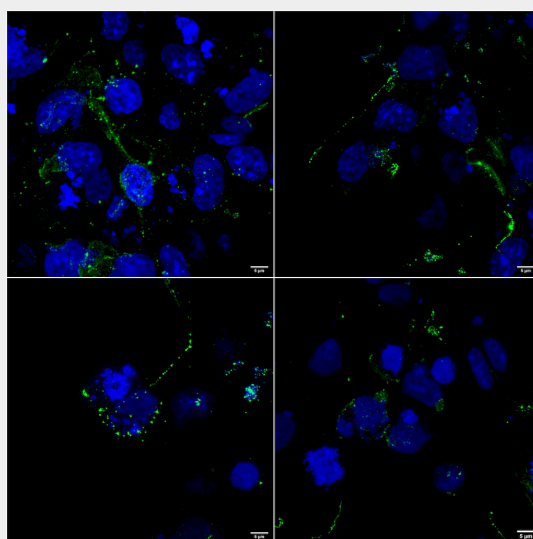
- [Western Blot](#)
- [Blocking Peptides](#)

- [Dot Blot](#)
- [Immunohistochemistry](#)
- [Immunofluorescence](#)
- [Immunoprecipitation](#)
- [Flow Cytometry](#)
- [Cell Culture](#)

## LRP4 (Extracellular) Antibody - Images

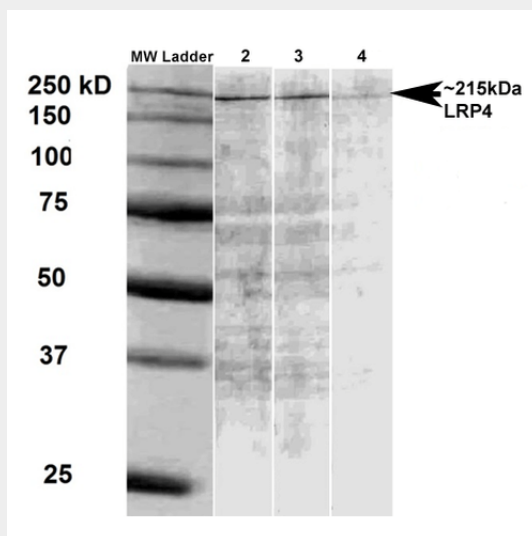


Immunocytochemistry/Immunofluorescence analysis using Mouse Anti-LRP4 (Extracellular) Monoclonal Antibody, Clone N207/27 (ASM10252). Tissue: Neuroblastoma cells (SH-SY5Y). Species: Human. Fixation: 4% PFA for 15 min. Primary Antibody: Mouse Anti-LRP4 (Extracellular) Monoclonal Antibody (ASM10252) at 1:200 for overnight at 4°C with slow rocking. Secondary Antibody: AlexaFluor 488 at 1:1000 for 1 hour at RT. Counterstain: Phalloidin-iFluor 647 (red) F-Actin stain; Hoechst (blue) nuclear stain at 1:800, 1.6mM for 20 min at RT. (A) Hoechst (blue) nuclear stain. (B) Phalloidin-iFluor 647 (red) F-Actin stain. (C) LRP4 (Extracellular) Antibody (D) Composite.



Immunocytochemistry/Immunofluorescence analysis using Mouse Anti-LRP4 Monoclonal Antibody, Clone N207/27 (ASM10252). Tissue: COS cells transfected with 2 ug human LRP4 plasmid. Species: Human. Fixation: 4% PFA for 10 min. Primary Antibody: Mouse Anti-LRP4 Monoclonal

Antibody (ASM10252) at 1:100 for 1 hour at RT. Secondary Antibody: Goat anti-mouse: Alexa 488. Counterstain: DAPI.



Western Blot analysis of Rat brain membrane lysate showing detection of LRP4 protein using Mouse Anti-LRP4 Monoclonal Antibody, Clone N207/27 (ASM10252). Primary Antibody: Mouse Anti-LRP4 Monoclonal Antibody (ASM10252) at 1:500, 1:1000, and 1:2000.

#### **LRP4 (Extracellular) Antibody - Background**

Potential cell surface endocytic receptor, which binds and internalizes extracellular ligands for degradation by lysosomes. It is involved in the negative regulation of the canonical Wnt signaling pathway, being able to antagonize the LRP6-mediated activation of this pathway.

#### **LRP4 (Extracellular) Antibody - References**

1. Bennett V., Baines A.J. (2001) *Physiol. Rev.* 81 (3): 1353-92.