

AS042

Leader in Biomolecular Solutions for Life Science



# FITC-conjugated Donkey anti-Rabbit IgG (H+L)

Catalog No.: AS042 **7 Publications**

## Basic Information

---

### Observed MW

### Calculated MW

### Category

Secondary Antibody

### Applications

IF/ICC,FC

### Cross-Reactivity

Rabbit

### Conjugate

FITC. Ex:491nm. Em:516nm.

## Background

---

Secondary antibodies are affinity-purified antibodies which will work with target-specific primary antibody in the detection, sorting or purification of its specified target. Secondary antibodies offer increased versatility enabling users to use many detection systems (e.g. HRP, AP, fluorescence). They can also provide greater sensitivity through signal amplification as multiple secondary antibodies. Most commonly, secondary antibodies are generated by immunizing the host animal (different from host species of primary antibody) with a pooled population of normal immunoglobulins from the host species of primary antibody and can be further purified and modified (i.e. antibody fragmentation, label conjugation, etc.) to ensure well-characterized specificity to corresponding normal immunoglobulins.

## Recommended Dilutions

---

IF/ICC 1:50 - 1:200

FC 1:50 - 1:200

## Immunogen Information

---

Gene ID

Swiss Prot

### Immunogen

This information is considered to be commercially sensitive.

### Synonyms

## Contact

---

 [www.abclonal.com](http://www.abclonal.com)

## Product Information

---

### Source

Donkey

### Isotype

Fluorescein conjugated IgG

### Purification

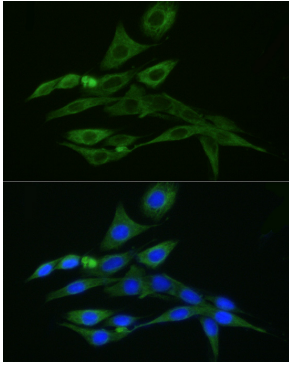
Affinity purification

### Storage

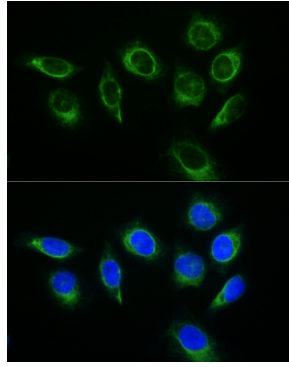
Store at -20°C. Avoid freeze / thaw cycles.

Buffer: PBS with 0.025% Sodium Azide,0.75% BSA,50% glycerol,pH7.3.

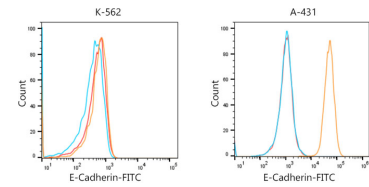
## Validation Data



Immunofluorescence analysis of PC-12 cells using Vimentin Rabbit mAb (A19607) at a dilution of 1:100 (40x lens). Secondary antibody: FITC Donkey Anti-Rabbit IgG (H+L) (AS042) at dilution of 1:200 (40x lens). Blue: DAPI for nuclear staining.



Immunofluorescence analysis of HeLa cells using Vimentin Rabbit mAb (A19607) at a dilution of 1:100 (40x lens). Secondary antibody: FITC Donkey Anti-Rabbit IgG (H+L) (AS042) at dilution of 1:200 (40x lens). Blue: DAPI for nuclear staining.



Flow cytometric analysis of Positive antibody E-Cadherin Rabbit mAb (2.5µg/mL) in various cells (orange) compare to Rabbit rabbit isotype control (blue) and non-staining control (Red).The secondary antibody used was FITC Donkey Anti-Rabbit IgG (H+L) (AS042) at 1:100.