

A4981

Leader in Biomolecular Solutions for Life Science



GLP-1 Rabbit mAb

Catalog No.: A4981

Recombinant

1 Publications

Basic Information

Observed MW

Calculated MW

21kDa

Category

Monoclonal Antibody

Applications

IHC-P,ELISA,IF-P

Cross-Reactivity

Mouse,Rat

CloneNo number

ARC1142

Background

The protein encoded by this gene is actually a preproprotein that is cleaved into four distinct mature peptides. One of these, glucagon, is a pancreatic hormone that counteracts the glucose-lowering action of insulin by stimulating glycogenolysis and gluconeogenesis. Glucagon is a ligand for a specific G-protein linked receptor whose signalling pathway controls cell proliferation. Two of the other peptides are secreted from gut endocrine cells and promote nutrient absorption through distinct mechanisms. Finally, the fourth peptide is similar to glicentin, an active enteroglucagon.

Recommended Dilutions

IF-P 1:50 - 1:200

IHC-P 1:50 - 1:200

ELISA Recommended starting concentration is 1 µg/mL. Please optimize the concentration based on your specific assay requirements.

Immunogen Information

Gene ID

2641

Swiss Prot

P01275

Immunogen

Synthetic peptide. This information is considered to be commercially sensitive.

Synonyms

GLP1; GLP2; GRPP; GLP-1

Contact

 www.abclonal.com

Product Information

Source

Rabbit

Isotype

IgG

Purification

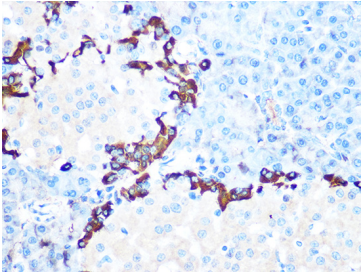
Affinity purification

Storage

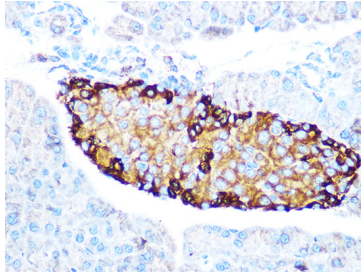
Store at -20°C. Avoid freeze / thaw cycles.

Buffer: PBS containing 50% glycerol and 0.05% BSA, preserved with proclin300 or sodium azide (as specified on the Certificate of Analysis), pH 7.3.

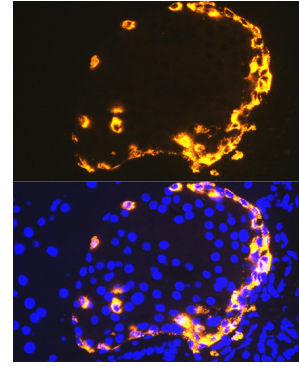
Validation Data



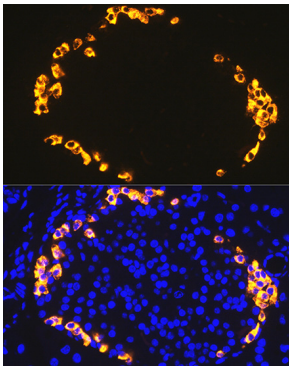
Immunohistochemistry analysis of paraffin-embedded Rat pancreas tissue using GLP-1 Rabbit mAb (A4981) at a dilution of 1:100 (40x lens). Microwave antigen retrieval performed with 0.01M PBS Buffer (pH 7.2) prior to IHC staining.



Immunohistochemistry analysis of paraffin-embedded Mouse pancreas tissue using GLP-1 Rabbit mAb (A4981) at a dilution of 1:100 (40x lens). Microwave antigen retrieval performed with 0.01M PBS Buffer (pH 7.2) prior to IHC staining.



Immunofluorescence analysis of paraffin-embedded Mouse pancreas using GLP-1 Rabbit mAb (A4981) at a dilution of 1:100 (40x lens). Secondary antibody: Cy3-conjugated Goat anti-Rabbit IgG (H+L)(AS007) at 1:500 dilution. Blue: DAPI for nuclear staining. High pressure antigen retrieval performed with 0.01M Citrate Buffer(pH 6.0) prior to IF staining.



Immunofluorescence analysis of paraffin-embedded Rat pancreas using GLP-1 Rabbit mAb (A4981) at a dilution of 1:100 (40x lens). Secondary antibody: Cy3-conjugated Goat anti-Rabbit IgG (H+L)(AS007) at 1:500 dilution. Blue: DAPI for nuclear staining. High pressure antigen retrieval performed with 0.01M Citrate Buffer(pH 6.0) prior to IF staining.