

RP00640

Leader in Biomolecular Solutions for Life Science



# Recombinant Mouse Apolipoprotein E/APOE Protein

Catalog No.: RP00640 **Recombinant**

## Sequence Information

Species	Gene ID	Swiss Prot
HEK293 cells	11816	P08226

### Tags

C-His

### Synonyms

APOE;AD2;APO-E;ApoE4;LDLCQ5;LPG;AI255918;Apo-E;ApoE

## Product Information

Source	Purification
HEK293 cells	≥ 95 % as determined by SDS-PAGE.

### Endotoxin

< 1 EU/μg of the protein by LAL method.

### Formulation

Lyophilized from a 0.22 μm filtered solution of PBS, pH 7.4.

### Reconstitution

Centrifuge the tube before opening. Reconstitute to a concentration of 0.1-0.5 mg/mL in sterile distilled water. Avoid vortex or vigorously pipetting the protein. For long term storage, it is recommended to add a carrier protein or stabilizer (e.g. 0.1% BSA, 5% HSA, 10% FBS or 5% Trehalose), and aliquot the reconstituted protein solution to minimize free-thaw cycles.

## Contact



[www.abclonal.com](http://www.abclonal.com)

## Background

Apolipoprotein E (Apo-E), is a member of the apolipoprotein A1/A4/E family. ApoE is a major protein component of serum LDL, VLDL, HDL, and chylomicrons. APOE may function in mediating the binding, internalization, and catabolism of lipoprotein particles. It can serve as a ligand for the LDL (apo B/E) receptor and for the specific apo-E receptor (chylomicron remnant) of hepatic tissues. APOE is usually secreted in plasma. Phosphorylation sites are present in the extracellular medium.

## Basic Information

### Description

Recombinant Mouse ApoE/APOE/Apolipoprotein E Protein is produced by Human cells expression system. The target protein is expressed with sequence (Glu19-Gln311) of mouse ApoE/APOE/Apolipoprotein E (Accession #P08226) fused with a 6×His tag at the C-terminus.

### Bio-Activity

Measured by its binding ability in a functional ELISA. Immobilized Mouse APOE (Catalog: RP00640) at 5 μg/mL (100 μL/well) can bind Mouse TREM2 (Catalog: RP01558) with a linear range of 0.16-1.5 μg/mL.

### Shipping

The product is shipped at ambient temperature. Upon receipt, store it immediately at the temperature recommended below.

### Operational Notes

For your safety and health, please wear a lab coat and disposable gloves for handling.

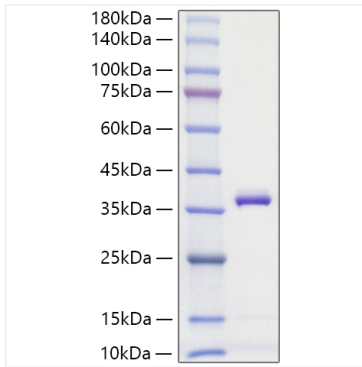
### Storage

Store at -20°C. Store the lyophilized protein at -20°C to -80°C up to 1 year from the date of receipt. After reconstitution, the protein solution is stable at -20°C for 3 months, at 2-8°C for up to 1 week. Avoid repeated freeze/thaw cycles.

\* For your safety and health, please wear a lab coat and disposable gloves when handling.

## Validation Data

---



Recombinant Mouse Apolipoprotein E/APOE Protein was determined by SDS-PAGE under reducing conditions with Coomassie Blue.