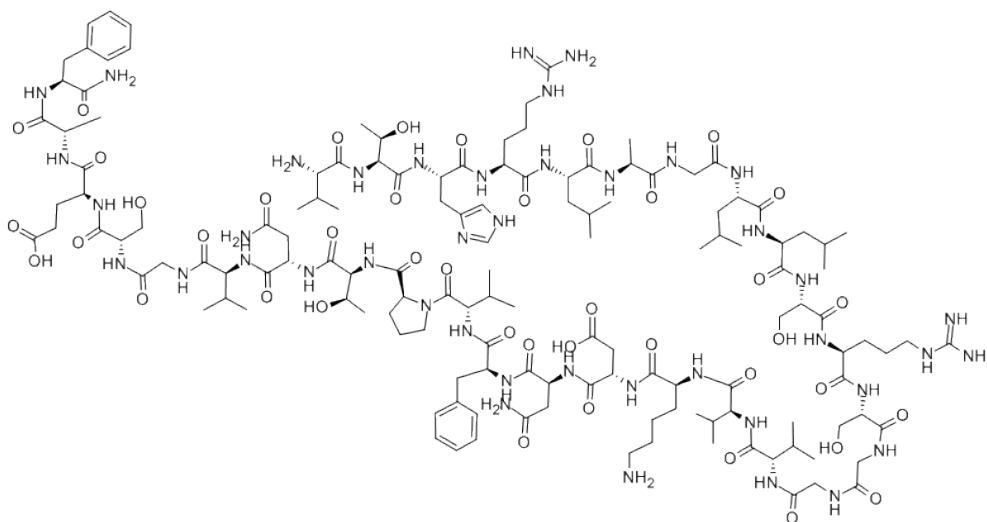


Calcitonin Gene Related peptide (32-37) (rat)

Cat # NB-48-0216



Product Information

Batch No.:	0350BP/01
Chemical Name:	CGRP 32-37 (rat)
Batch Molecular Formula:	C ₂₇ H ₄₁ N ₇ O ₉
Batch Molecular Weight:	607.66
CAS No.:	
Physical Appearance:	White lyophilised solid
Storage:	Desiccate at -20° C

Solvent and solubility

Soluble to 1 mg/ml in water

Biological activity

Peptide antagonist for CGRP1 receptors.

References

1. Maton et al. (1990) Peptides 11:1163
2. Poyner (1995) TiPS 16:424
3. Poyner et al. (1998) Br J Pharmacol 124:1659
4. Wisskirchen et al. (1998) Br J Pharmacol 123:16734. Ten Broeke et al. (2004) Clin Exp Allergy 34:170

- CAUTION - Not fully tested. For Research use only. Not for human use. –

NB-48-0216 Calcitonin Gene Related peptide (32-37) (rat)

Analytical data

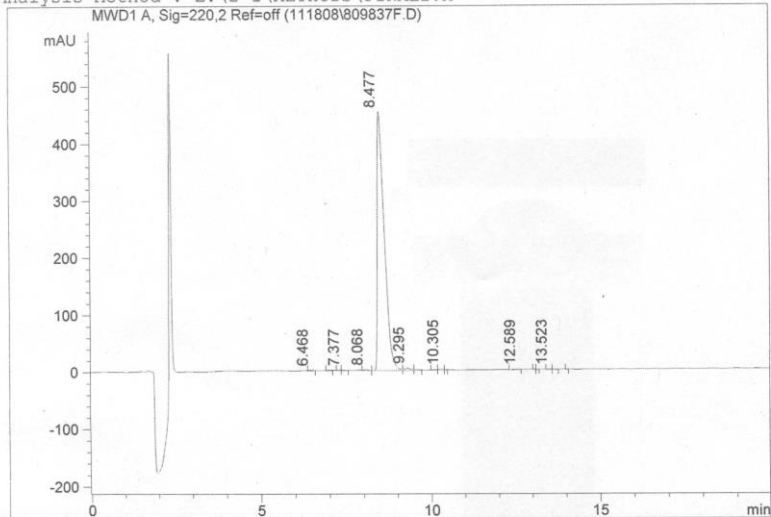
HPLC: corresponds to the reference

MS: corresponds to the reference

Tests: Counter Ion: Trifluoroacetate
HPLC Assay: 96.4% (complies).

```

=====
Injection Date : 11/18/2008          Location  : Vial 25
Sample Name    : Final              Inj. Vol. : 100 µl
Acq Operator   : ZSD
Acq. Method   : FINAL2.M
Analysis Method : E:\2-1\METHODS\FINAL2.M
=====
  
```



Peak #	RT [min]	Type	Area	Perent	Report
1	6.468	VV	16.758	0.247	
2	7.025	VV B	13.079	0.193	
3	7.293	VV F	10.317	0.152	
4	7.377	VV	12.383	0.183	
5	8.068	VV	16.572	0.244	
6	8.477	VV	6542.782	96.459	
7	9.295	VV	52.236	0.770	
8	9.535	VV	17.610	0.260	
9	10.132	VV F	11.462	0.169	
10	10.305	VV	19.803	0.292	
11	10.426	VV B	6.353	0.094	
12	12.589	VV	19.358	0.285	
13	13.067	VV	6.435	0.095	
14	13.146	VV B	6.198	0.091	
15	13.523	VV	13.956	0.206	
16	13.653	VV B	11.436	0.169	
17	14.012	VV	6.244	0.092	

*** End of Report ***

- CAUTION - Not fully tested. For Research use only. Not for human use. -