

Melanoma Associated Antigen; Clone KBA.62

Catalog Number	Format	Volume
A00153-0002	(Ready-To-Use)	2 ml
A00153-0007	(Ready-To-Use)	7 ml
A00153-0025	(Ready-To-Use)	25 ml
A00153-C.1	(Concentrate)	0.1 ml
A00153-C	(Concentrate)	1 ml

Intended Use

For In-Vitro Diagnostic Use. This antibody is intended for the qualitative visualization of the anatomical elements listed in the Specificity section. It is intended to be used within an Immunohistochemistry (IHC) procedure on formalin-fixed paraffin-embedded (FFPE) human tissue followed by visualization by light microscopy.

Description

Titer/Working Dilution: Ready-to-Use: No further dilution required.

Concentrate: Immunohistochemistry (Frozen and Formalin-fixed):	0.5-1 µg/ml
Immunofluorescence:	0.5-1 µg/ml
Western Blotting:	0.5-1 µg/ml

Species: Mouse
Immunogen: Human KAL cells derived from lymph node metastasis of malignant melanoma.
Clone: KBA.62
Isotype: IgG1 / Kappa
Format: Ready-To-Use antibody has been pre-titered and quality controlled to work on formalin-fixed paraffin-embedded as well as acetone fixed cryostat tissue sections. No further titration is required.

Concentrate antibody is provided at 200µg/ml of Ab purified from Bioreactor Concentrate by Protein A/G. Prepared in 10mM PBS with 0.05% BSA & 0.05% Sodium Azide.

Specificity: KBA.62 is a novel anti-melanoma antibody. It reacts positively against melanocytic tumors but not against other tumors, thus demonstrating specificity and sensitivity. Moreover, it reacts positively against junctional nevus cells but not intradermal nevi, and against fetal melanocytes but not normal adult melanocytes.

Background: The KBA.62 antibody is useful in identifying malignant melanomas. Metastatic amelanotic melanoma can often be confused with a variety of poorly differentiated carcinomas, large cell lymphomas, sarcomas, spindle cell carcinomas, and various types of mesenchymal neoplasms. A keratin-negative, vimentin-rich neoplasm that immuno-reacts with an antibody to S-100 protein and with KBA.62 antibody is, with rare exception, a melanoma. Anti-KBA.62 is a useful additional marker for melanoma, specifically in desmoplastic/spindle cell cases, and in the context of micro-metastasis in the sentinel lymph node.


Species Reactivity: Human. Others not known.


Positive Control: Melanoma

Cellular Localization: Cell surface

Microbiological State: Nonsterile

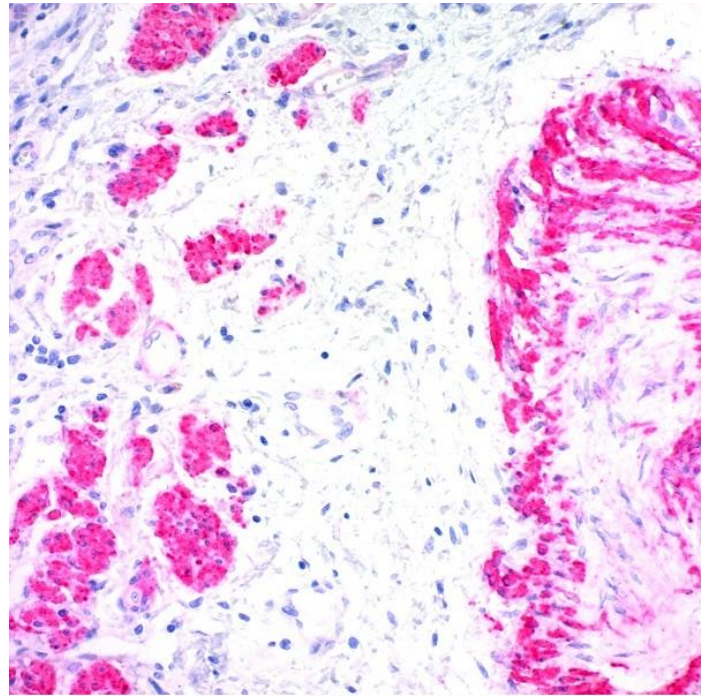
Materials and Reagents Required but not Provided

Storage: 2° C  8° C

 ScyTek Laboratories, Inc.
 205 South 600 West
 Logan, UT 84321
 U.S.A.

- Control tissue and reagents
- Xylene, graded alcohols, and deionized/distilled water
- Antibody Diluent.
- IHC detection system. Suggested: ScyTek Cat# ABZ125 "CRF Anti-Polyvalent HRP Polymer" and ScyTek Cat# ACV500 "DAB Chromogen/Substrate Kit (High Contrast)".
- Wash buffer for rinses (ScyTek Cat# TBT500)
- HIER Retrieval Solution
- Hematoxylin counterstain and bluing reagent (ScyTek Cat# HMM500 and BRT500)
- Mounting medium and coverslips

Note: ScyTek Laboratories has a wide range of IHC reagents and ancillaries that can be found at scytek.com.



FFPE human melanoma stained with Melanoma Associated Antigen; Clone KBA.62 using UltraTek Alk-Phos and Permanent Red Chromogen. 200X

Procedure

- Tissue Section Pretreatment (Highly Recommended):** Staining of formalin fixed paraffin embedded tissue sections is significantly enhanced by pretreatment with Tis-EDTA HIER Solution (10x) pH 9.0 (ScyTek catalog# TES500) or Citrate Plus (10x) HIER Solution (ScyTek catalog# CPL500)
- Primary Antibody Incubation Time:** We suggest an incubation period of 30 minutes at room temperature. However, depending upon the fixation conditions and the staining system employed, optimal incubation should be determined by the user.
- Visualization:** For maximum staining intensity we recommend the "CRF Anti-Polyvalent HRP Polymer" (ScyTek catalog# ABZ125, see IFU for instructions) combined with the "DAB Chromogen/Substrate Bulk Pack (High Contrast)" (ScyTek catalog# ACV500, see IFU for instructions).

Storage and Stability

CE

EC REP

Emergo Europe
 Westervoortsedijk 60
 6827 AT Arnhem, The Netherlands

P.O. Box 3286 - Logan, Utah 84323, U.S.A. - Tel. (800) 729-8350 – Tel. (435) 755-9848 - Fax (435) 755-0015 - www.ScyTek.com

Do not Freeze. Store at 2-8°C. Return to 2-8° immediately after use. Do not use after expiration date printed on label. Verify visually that antibody has not been contaminated before use. Do not use if reagent becomes cloudy or precipitates.

Limitations

Immunohistochemistry is a complex technique involving both histological and immunological detection methods. Tissue processing and handling prior to immunostaining can cause inconsistent results. Variations in fixation and embedding or the inherent nature of the tissue specimen may cause variations in results. Endogenous peroxidase activity or pseudoperoxidase activity in erythrocytes and endogenous biotin may cause non-specific staining depending on detection system used. This data sheet's recommendations and procedures were validated using ScyTek IHC reagents and may not be suitable for other detection systems.

Precautions

1. Contains Sodium Azide as a preservative (0.09% w/v), do not ingest. Sodium Azide may react with lead and copper plumbing to form highly explosive metal azides. Upon disposal, flush with large volumes of water to prevent azide build-up in plumbing. This product contains no hazardous material at a reportable concentration according to U.S. 29 CFR 1910.1200, OSHA Hazardous Communication Standard and EC Directive 91/155/EC.
2. Do not pipette by mouth.
3. Avoid contact of reagents and specimens with skin and mucous membranes.
4. Avoid microbial contamination of reagents or increased nonspecific staining may occur.
5. The user must validate any procedures and recommendations that differ from this data sheet.
6. The SDS may be found at scytek.com


References

1. E Cohen-Knafo, T al Saati, J Aziza, E Ralfkiaer, J Selves, B Gorguet, and G Delsol. Production and characterisation of an antimelanoma monoclonal antibody KBA.62 using a new melanoma cell line reactive on paraffin wax embedded sections. J Clin Pathol. 1995; 48(9): 826–831.
2. Cécile Pagès et. al. KBA.62: a useful marker for primary and metastatic melanomas. Human Pathology 39(8):1136–1142; 2008.

Warranty

No products or "Instructions For Use (IFU)" are to be construed as a recommendation for use in violation of any patents. We make no representations, warranties or assurances as to the accuracy or completeness of information provided on our IFU or website. Our warranty is limited to the actual price paid for the product. ScyTek Laboratories, Inc. is not liable for any property damage, personal injury, time or effort or economic loss caused by our products.

Storage: 2° C  8° C



ScyTek Laboratories, Inc.
205 South 600 West
Logan, UT 84321
U.S.A.



EC REP

Emergo Europe
Westervoortsedijk 60
6827 AT Arnhem, The Netherlands