

A20420

Leader in Biomolecular Solutions for Life Science



Claudin18.2 Rabbit mAb

Catalog No.: A20420

Recombinant

1 Publications

Basic Information

Observed MW

Refer to figures

Calculated MW

28kDa

Category

SMab Recombinant Monoclonal
Antibody

Applications

IHC-P,ELISA

Cross-Reactivity

Human

CloneNo number

ARC5062-02

Background

This gene encodes a member of the claudin family. Claudins are integral membrane proteins and components of tight junction strands. Tight junction strands serve as a physical barrier to prevent solutes and water from passing freely through the paracellular space between epithelial or endothelial cell sheets, and also play critical roles in maintaining cell polarity and signal transductions. This gene is upregulated in patients with ulcerative colitis and highly overexpressed in infiltrating ductal adenocarcinomas. PKC/MAPK/AP-1 (protein kinase C/mitogen-activated protein kinase/activator protein-1) dependent pathway regulates the expression of this gene in gastric cells. Alternatively spliced transcript variants encoding different isoforms have been identified.

Recommended Dilutions

IHC-P 1:50 - 1:200

ELISA Recommended starting concentration is 1 µg/mL. Please optimize the concentration based on your specific assay requirements.

Immunogen Information

Gene ID

51208

Swiss Prot

P56856

Immunogen

A synthetic peptide corresponding to a sequence within amino acids 1-100 of human CLDN18.2 (P56856-2).

Synonyms

SFTA5; SFTPJ; Claudin18.2

Contact



www.abclonal.com

Product Information

Source

Rabbit

Isotype

IgG

Purification

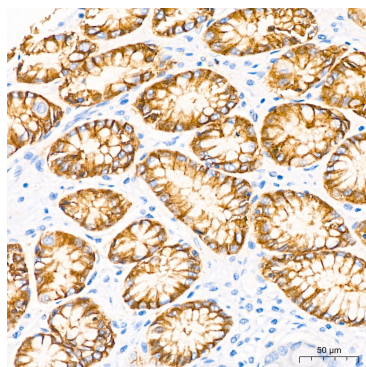
Affinity purification

Storage

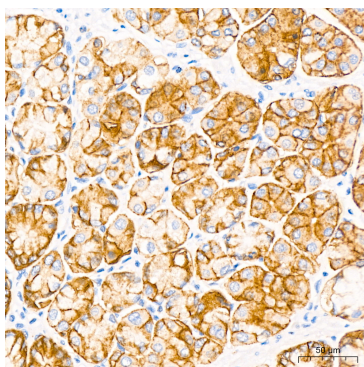
Store at -20°C. Avoid freeze / thaw cycles.

Buffer: PBS with 0.05% proclin300,0.05% BSA,50% glycerol,pH7.3.

Validation Data



Immunohistochemistry analysis of paraffin-embedded Human stomach using CLDN18.2 Rabbit mAb (A20420) at dilution of 1:50 (40x lens). High pressure antigen retrieval performed with 0.01M Tris/EDTA Buffer (pH 9.0) prior to IHC staining.



Immunohistochemistry analysis of paraffin-embedded Human stomach using CLDN18.2 Rabbit mAb (A20420) at dilution of 1:50 (40x lens). High pressure antigen retrieval performed with 0.01M Tris/EDTA Buffer (pH 9.0) prior to IHC staining.