

A24645

Leader in Biomolecular Solutions for Life Science



ST6GAL1/CD75 Rabbit mAb

Catalog No.: A24645 **Recombinant**

Basic Information

Observed MW

50-70kDa

Calculated MW

20kDa/47kDa

Category

SMab Recombinant Monoclonal
Antibody

Applications

WB,IHC-P,IF/ICC,FC,ELISA

Cross-Reactivity

Human

CloneNo number

ARC63359

Recommended Dilutions

WB 1:2000 - 1:8000

IHC-P 1:500 - 1:1000

IF/ICC 1:50 - 1:200

FC 1:500 - 1:1000

ELISA Recommended starting concentration is 1 µg/mL. Please optimize the concentration based on your specific assay requirements.

Contact

 www.abclonal.com

Background

This gene encodes a member of glycosyltransferase family 29. The encoded protein is a type II membrane protein that catalyzes the transfer of sialic acid from CMP-sialic acid to galactose-containing substrates. The protein, which is normally found in the Golgi but can be proteolytically processed to a soluble form, is involved in the generation of the cell-surface carbohydrate determinants and differentiation antigens HB-6, CD75, and CD76. This gene has been incorrectly referred to as CD75. Alternative splicing results in multiple transcript variants.

Immunogen Information

Gene ID

6480

Swiss Prot

P15907

Immunogen

Recombinant protein (or fragment). This information is considered to be commercially sensitive.

Synonyms

ST6N; CDw75; SIAT1; ST6GalI; ST6GAL1/CD75

Product Information

Source

Rabbit

Isotype

IgG

Purification

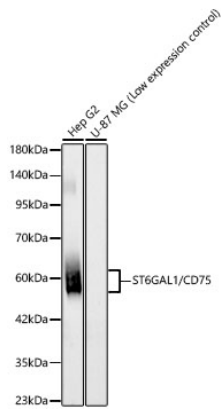
Affinity purification

Storage

Store at -20°C. Avoid freeze / thaw cycles.

Buffer: PBS containing 50% glycerol and 0.05% BSA, preserved with proclin300 or sodium azide (as specified on the Certificate of Analysis), pH 7.3.

Validation Data



Western blot analysis of lysates from Hep G2 cells, using ST6GAL1/CD75 Rabbit mAb (A24645) at 1:7000 dilution.

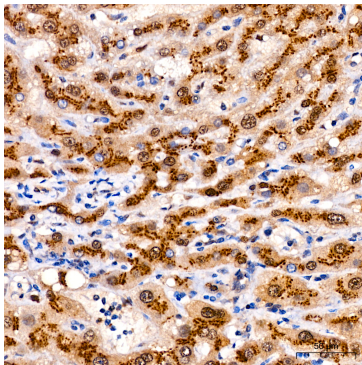
Secondary antibody: HRP-conjugated Goat anti-Rabbit IgG (H+L) (AS014) at 1:10000 dilution.

Lysates/proteins: 25µg per lane.

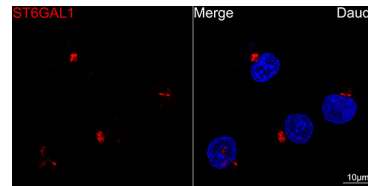
Blocking buffer: 3% nonfat dry milk in TBST.

Detection: ECL Basic Kit (RM00020).

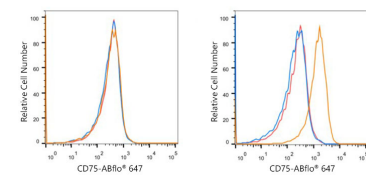
Exposure time: 90s.



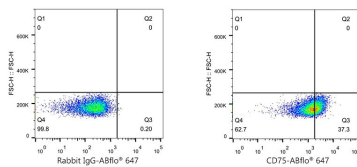
Immunohistochemistry analysis of paraffin-embedded Human liver using ST6GAL1/CD75 Rabbit mAb (A24645) at dilution of 1:800 (40x lens). High pressure antigen retrieval performed with 0.01M Citrate buffer (pH 6.0) prior to IHC staining.



Confocal imaging of Daudi cells using ST6GAL1/CD75 Rabbit mAb (A24645, dilution 1:200) followed by a further incubation with Cy3 Goat Anti-Rabbit IgG (H+L) (AS007, dilution 1:500) (Red). DAPI was used for nuclear staining (Blue). Objective: 100x.



Flow cytometry: 1×10^6 HeLa cells (negative control, left) and Daudi cells (right) were surface-stained with ST6GAL1/CD75 Rabbit mAb (A24645, 2 µg/mL, orange line) or ABflo® 647 Rabbit IgG isotype control (A22070, 2 µg/mL, blue line), followed by Alexa Fluor® 647 conjugated goat anti-rabbit pAb staining. Non-fluorescently stained cells were used as blank control (red line).



Flow cytometry: 1×10^6 Daudi cells were surface-stained with ABflo® 647 Rabbit IgG isotype control (A22070, 2 µg/mL, left) or ST6GAL1/CD75 Rabbit mAb (A24645, 2 µg/mL, right).