

Anti-CD68 antibody [KP1]

#Cat: NB-22-52995-01	Size: 0.1mLC
#Cat: NB-22-52995-05	Size: 0.5mLC
#Cat: NB-22-52995-1	Size: 1.0mLC
#Cat: NB-22-52995-7	Size: 7mLD

General Information

Product Type	Primary antibodies
Short Description	Mouse monoclonal antibody anti-CD68 is suitable for use in Immunohistochemistry research applications.
Application	IHC-P
Host/Source	Mouse
Reactivity	Human

Product Properties

Clonality	Monoclonal
Clone ID	KP1
Concentration	
Conjugation	Unconjugated
Purification	Affinity purified
Dilution Range	1:100-200

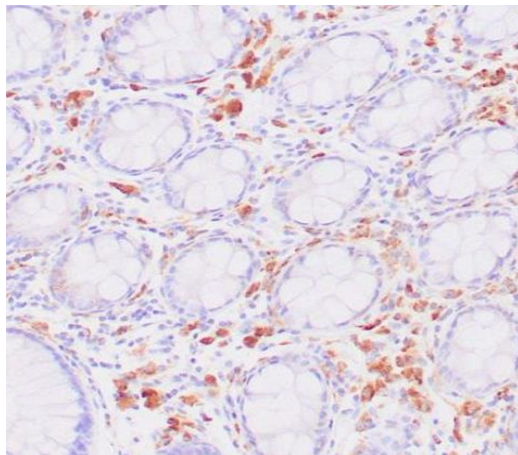
Formulation	Tris-HCl buffer containing stabilizing protein (BSA) and <0.1% ProClin
Isotype	IgG1/Kappa
Storage Instruction	Store at 2-8°C for up to 24 months. Predilute: Ready to use, no reconstitution necessary. Concentrate: Use dilution range and appropriate lab-standardized diluent. Stability after dilution: 7 days at 24°C, 3 months at 2-8°C, 6months at -20°C.

Target Information

Gene ID	968
Gene Symbol	CD68
Uniprot ID	CD68_HUMAN
Immunogen	Subcellular fraction of human alveolar macrophages
Immunogen Region	
Specificity	Positive control: Tonsil, lymph node, spleen

This product is suitable for in-vitro studies under the RESEARCH USE ONLY [RUO] licence.
This product must not be used as for diagnostic or other medical purposes.

Immunogen Sequence



Human colon stained with anti-CD68 antibody using peroxidase conjugate and DAB chromogen. Note intense cytoplasmic staining of glandular cells.

This product is suitable for in-vitro studies under the RESEARCH USE ONLY [RUO] licence.
This product must not be used as for diagnostic or other medical purposes.