

A23205

Leader in Biomolecular Solutions for Life Science



CD68 Rabbit mAb

Catalog No.: A23205

Recombinant

5 Publications

Basic Information

Observed MW

130-140kDa

Calculated MW

37kDa

Category

SMab Recombinant Monoclonal
Antibody

Applications

WB,IHC-P,ELISA,IF-P

Cross-Reactivity

Human

CloneNo number

ARC51152

Recommended Dilutions

WB 1:1000 - 1:2000

IF-P 1:200 - 1:800

IHC-P 1:2000 - 1:9000

ELISA Recommended starting concentration is 1 µg/mL. Please optimize the concentration based on your specific assay requirements.

Contact



www.abclonal.com

Background

This gene encodes a 110-kD transmembrane glycoprotein that is highly expressed by human monocytes and tissue macrophages. It is a member of the lysosomal/endosomal-associated membrane glycoprotein (LAMP) family. The protein primarily localizes to lysosomes and endosomes with a smaller fraction circulating to the cell surface. It is a type I integral membrane protein with a heavily glycosylated extracellular domain and binds to tissue- and organ-specific lectins or selectins. The protein is also a member of the scavenger receptor family. Scavenger receptors typically function to clear cellular debris, promote phagocytosis, and mediate the recruitment and activation of macrophages. Alternative splicing results in multiple transcripts encoding different isoforms.

Immunogen Information

Gene ID

968

Swiss Prot

P34810

Immunogen

Synthetic peptide. This information is considered to be commercially sensitive.

Synonyms

GP110; LAMP4; SCARD1; CD68

Product Information

Source

Rabbit

Isotype

IgG

Purification

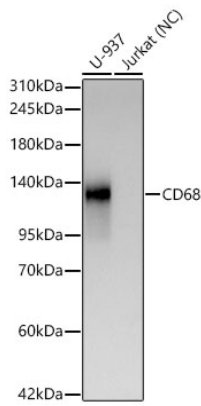
Affinity purification

Storage

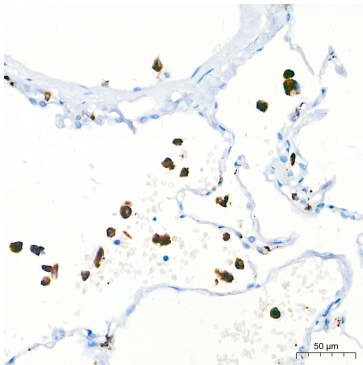
Store at -20°C. Avoid freeze / thaw cycles.

Buffer: PBS with 0.09% Sodium azide,0.05% BSA,50% glycerol,pH7.3.

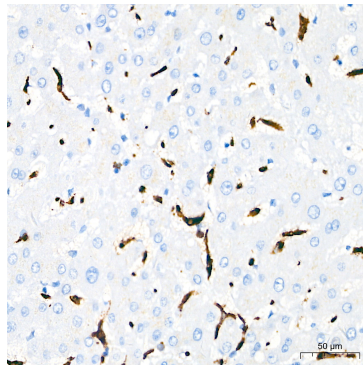
Validation Data



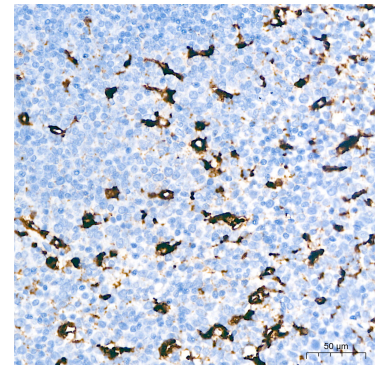
Western blot analysis of various lysates using CD68 Rabbit mAb (A23205) at 1:1000 dilution incubated overnight at 4°C.
Secondary antibody: HRP-conjugated Goat anti-Rabbit IgG (H+L) (AS014) at 1:10000 dilution.
Lysates/proteins: 25 µg per lane.
Blocking buffer: 3% nonfat dry milk in TBST.
Detection: ECL Basic Kit (RM00020)
Negative control (NC): Jurkat
Exposure time: 90 s.



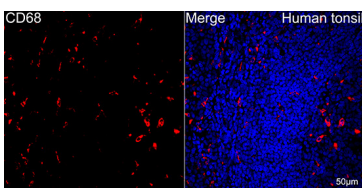
Immunohistochemistry analysis of paraffin-embedded Human lung tissue using CD68 Rabbit mAb (A23205) at a dilution of 1:8000 (40x lens). High pressure antigen retrieval performed with 0.01M Citrate Buffer (pH 6.0) prior to IHC staining.



Immunohistochemistry analysis of paraffin-embedded Human liver tissue using CD68 Rabbit mAb (A23205) at a dilution of 1:8000 (40x lens). High pressure antigen retrieval performed with 0.01M Citrate Buffer (pH 6.0) prior to IHC staining.



Immunohistochemistry analysis of paraffin-embedded Human tonsil tissue using CD68 Rabbit mAb (A23205) at a dilution of 1:8000 (40x lens). High pressure antigen retrieval performed with 0.01M Citrate Buffer (pH 6.0) prior to IHC staining.



Confocal imaging of paraffin-embedded Human tonsil tissue using CD68 Rabbit mAb (A23205, dilution 1:200) followed by a further incubation with Cy3 Goat Anti-Rabbit IgG (H+L) (AS007, dilution 1:500) (Red). DAPI was used for nuclear staining (Blue). Objective: 40x. Perform high pressure antigen retrieval with 0.01 M citrate buffer (pH 6.0) prior to IF staining.