

A23783

Leader in Biomolecular Solutions for Life Science



www.abclonal.com

# CD244 Rabbit mAb

Catalog No.: A23783

Recombinant

## Basic Information

### Observed MW

70-120kDa

### Calculated MW

30kDa/36kDa/41kDa

### Category

SMab Recombinant Monoclonal  
Antibody

### Applications

WB,FC,ELISA

### Cross-Reactivity

Human

### CloneNo number

ARC61963

## Recommended Dilutions

**WB** 1:500 - 1:1000

**FC** 1:500 - 1:1000

**ELISA** Recommended starting concentration is 1 µg/mL. Please optimize the concentration based on your specific assay requirements.

## Contact

 [www.abclonal.com](http://www.abclonal.com)

## Background

This gene encodes a cell surface receptor expressed on natural killer (NK) cells (and some T cells) that mediate non-major histocompatibility complex (MHC) restricted killing. The interaction between NK-cell and target cells via this receptor is thought to modulate NK-cell cytolytic activity. Alternatively spliced transcript variants encoding different isoforms have been found for this gene.

## Immunogen Information

### Gene ID

51744

### Swiss Prot

Q9BZW8

### Immunogen

Recombinant protein (or fragment). This information is considered to be commercially sensitive.

### Synonyms

CD244; 2B4; NAIL; NKR2B4; Nmrk; SLAMF4; CD244 molecule

## Product Information

### Source

Rabbit

### Isotype

IgG

### Purification

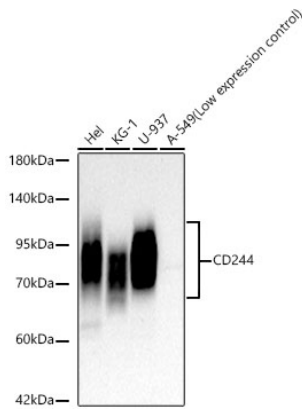
Affinity purification

### Storage

Store at -20°C. Avoid freeze / thaw cycles.

Buffer: PBS containing 50% glycerol and 0.05% BSA, preserved with proclin300 or sodium azide (as specified on the Certificate of Analysis), pH 7.3.

## Validation Data



Western blot analysis of various lysates, using CD244 Rabbit mAb (A23783) at 1:1000 dilution.

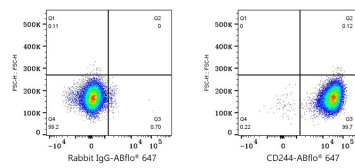
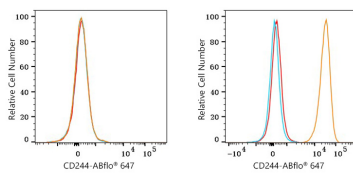
Secondary antibody: HRP-conjugated Goat anti-Rabbit IgG (H+L) (AS014) at 1:10000 dilution.

Lysates/proteins: 25µg per lane.

Blocking buffer: 3% nonfat dry milk in TBST.

Detection: ECL Basic Kit (RM00020).

Exposure time: 60s.



Flow cytometry:  $1 \times 10^6$  K-562 cells (negative control, left) and HEL cells (right) were surface-stained with CD244 Rabbit mAb (A23783, 2 µg/mL, orange line) or Rabbit IgG isotype control (AC042, 2 µg/mL, blue line), followed by Alexa Fluor® 647 conjugated goat anti-rabbit pAb staining. Non-fluorescently stained cells were used as blank control (red line).

Flow cytometry:  $1 \times 10^6$  HEL cells were surface-stained with Rabbit IgG isotype control (AC042, 2 µg/mL, left) or CD244 Rabbit mAb (A23783, 2 µg/mL, right), followed by Alexa Fluor® 647 conjugated goat anti-rabbit pAb staining.