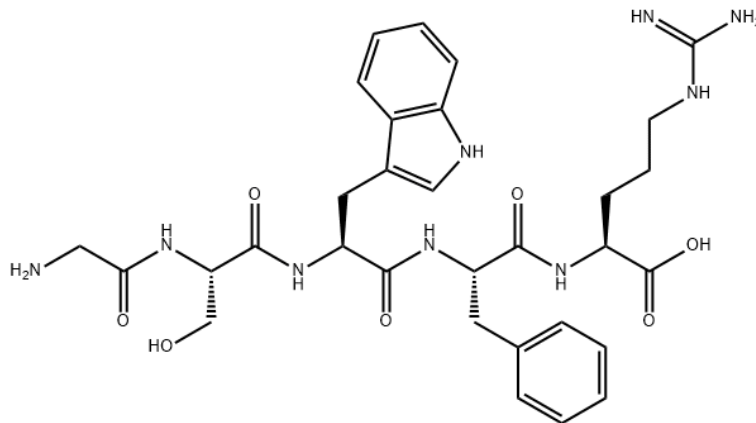


[Trp3,Arg5]-Ghrelin (1-5) (human, rat)

Cat # NB-48-0054



Product Information

Batch No.:	0361BP/01
Synonyms:	GSWFR;H-Gly-Ser-Trp-Phe-Arg-OH; Glycyl-L-seryl-L-tryptophyl-L-phenylalanyl-L-arginine; L-Arginine, glycyl-L-seryl-L-tryptophyl-L-phenylalanyl-;(2S)-2-[[[(2S)-2-[[[(2S)-2-[[[(2S)-2-[(2-aminoacetyl)amino]-3-hydroxypropanoyl]amino]-3-(1H-indol-3-yl)propanoyl]amino]-3-phenylpropanoyl]amino]-5-(diaminomethylideneamino)pentanoic acid
Batch Molecular Formula:	C ₃₁ H ₄₁ N ₉ O ₇
Batch Molecular Weight:	651.71
CAS No.:	[848442-59-1]
Physical Appearance:	White lyophilised solid
Storage:	Desiccate at -20° C

Solvent and solubility

Soluble in water

Biological activity

Novel growth hormone secretagogue (GSH) receptor agonist based on the primary structure of ghrelin (IC₅₀ = 10 μM). Displays stimulation of growth hormone secretion after intravenous or oral administration and increased food intake in non-fasted mice when administered centrally.

References

1. Ohinata et al. (2006) Peptides 27:1632

- CAUTION - Not fully tested. For Research use only. Not for human use. –

NB-48-0054 [Trp3,Arg5]-Ghrelin (1-5) (human, rat)

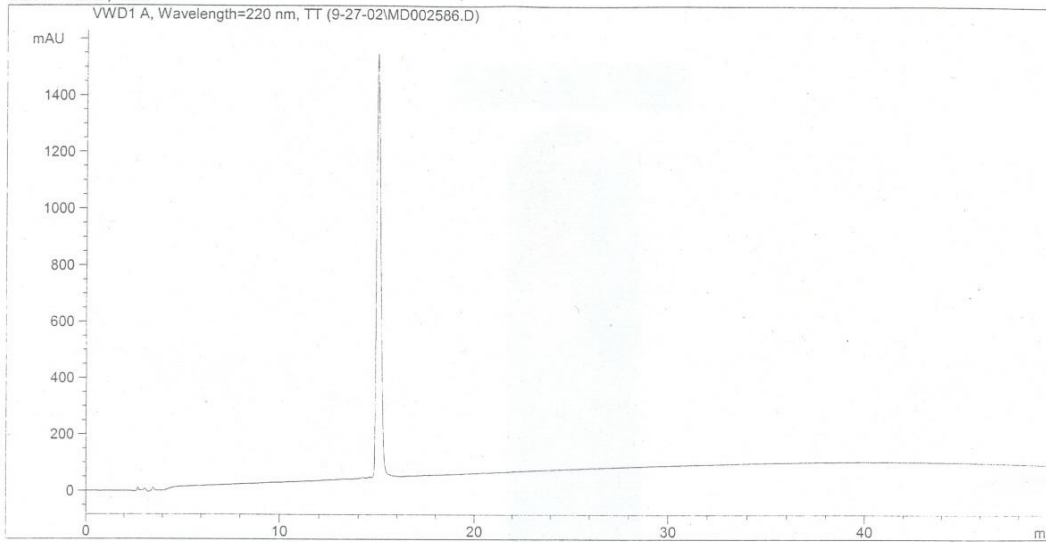
Analytical data

HPLC: corresponds to the reference

MS: corresponds to the reference

Tests: HPLC Assay: 99.59% (complies).

Gradient 10%-60% in 50 min
 Column Vydac C18, 218TP54, (4.6mmIDx250mmL)
 Buffer A:0.05%TFA in H2O B:0.05%TFA in MeCN
 Flow 1mL/min



=====
 Area Percent Report
 =====

Sorted By : Signal
 Multiplier : 1.0000
 Dilution : 1.0000
 Sample Amount : 2.00000 [ng/ul] (not used in calc.)

Signal 1: VWD1 A, Wavelength=220 nm, TT

Peak #	RetTime [min]	Type	Width [min]	Area mAU *s	Height [mAU]	Area %
1	14.222	BP	0.1940	46.64035	3.39105	0.2005
2	14.560	VV	0.1291	23.92177	2.91785	0.1029
3	14.938	VB	0.2425	2.31615e4	1502.37732	99.5920
4	16.624	PB	0.2550	24.32151	1.28968	0.1046

Totals : 2.32564e4 1509.97590

Results obtained with enhanced integrator!
 =====

- CAUTION - Not fully tested. For Research use only. Not for human use. -