

A24610

Leader in Biomolecular Solutions for Life Science



CDA Rabbit mAb

Catalog No.: A24610 **Recombinant**

Basic Information

Observed MW

Refer to figures

Calculated MW

16kDa

Category

SMab Recombinant Monoclonal Antibody

Applications

IHC-P,ELISA,FC (intra)

Cross-Reactivity

Human,Mouse

CloneNo number

ARC63546

Recommended Dilutions

IHC-P 1:500 - 1:2000

FC (intra) 1:50- 1:100

ELISA Recommended starting concentration is 1 µg/mL. Please optimize the concentration based on your specific assay requirements.

Contact

 www.abclonal.com

Background

This gene encodes an enzyme involved in pyrimidine salvaging. The encoded protein forms a homotetramer that catalyzes the irreversible hydrolytic deamination of cytidine and deoxycytidine to uridine and deoxyuridine, respectively. It is one of several deaminases responsible for maintaining the cellular pyrimidine pool. Mutations in this gene are associated with decreased sensitivity to the cytosine nucleoside analogue cytosine arabinoside used in the treatment of certain childhood leukemias.

Immunogen Information

Gene ID

978

Swiss Prot

P32320

Immunogen

Recombinant protein (or fragment). This information is considered to be commercially sensitive.

Synonyms

CDD; CDA

Product Information

Source

Rabbit

Isotype

IgG

Purification

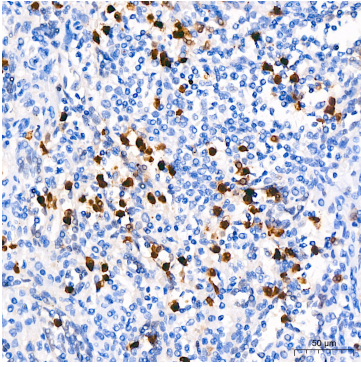
Affinity purification

Storage

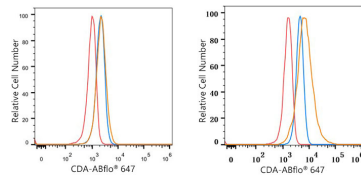
Store at -20°C. Avoid freeze / thaw cycles.

Buffer: PBS containing 50% glycerol and 0.05% BSA, preserved with proclin300 or sodium azide (as specified on the Certificate of Analysis), pH 7.3.

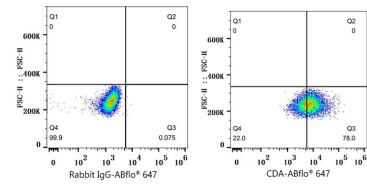
Validation Data



Immunohistochemistry analysis of paraffin-embedded Human spleen tissue using CDA Rabbit mAb (A24610) at dilution of 1:1000 (40x lens). High pressure antigen retrieval performed with 0.01M Citrate Buffer (pH 6.0) prior to IHC staining.



Flow cytometry: 1×10^6 HEL cells (negative control, left) and HeLa cells (right) were intracellularly-stained with CDA Rabbit mAb (A24610, 2 $\mu\text{g}/\text{mL}$, orange line) or ABflo® 647 Rabbit IgG isotype control (A22070, 5 $\mu\text{l}/\text{Test}$, blue line), followed by ABflo® 647 conjugated goat anti-rabbit pAb staining. Non-fluorescently stained cells were used as blank control (red line).



Flow cytometry: 1×10^6 HeLa cells were intracellularly-stained with ABflo® 647 Rabbit IgG isotype control (A22070, 2 $\mu\text{g}/\text{mL}$, left) or CDA Rabbit mAb (A24610, 2 $\mu\text{g}/\text{mL}$, right).