

A3251

Leader in Biomolecular Solutions for Life Science



RAB11A Rabbit mAb

Catalog No.: A3251

Recombinant

5 Publications

Basic Information

Observed MW

24kDa

Calculated MW

24kDa

Category

SMab Recombinant Monoclonal
Antibody

Applications

WB,IF/ICC,ELISA

Cross-Reactivity

Human,Mouse,Rat

CloneNo number

ARC0767

Recommended Dilutions

WB 1:1000 - 1:6000

IF/ICC 1:100 - 1:1000

ELISA Recommended starting concentration is 1 µg/mL. Please optimize the concentration based on your specific assay requirements.

Contact

 www.abclonal.com

Background

The protein encoded by this gene belongs to the Rab family of the small GTPase superfamily. It is associated with both constitutive and regulated secretory pathways, and may be involved in protein transport. Two transcript variants encoding different isoforms have been found for this gene.

Immunogen Information

Gene ID

8766

Swiss Prot

P62491

Immunogen

Synthetic peptide. This information is considered to be commercially sensitive.

Synonyms

YL8; RAB11A

Product Information

Source

Rabbit

Isotype

IgG

Purification

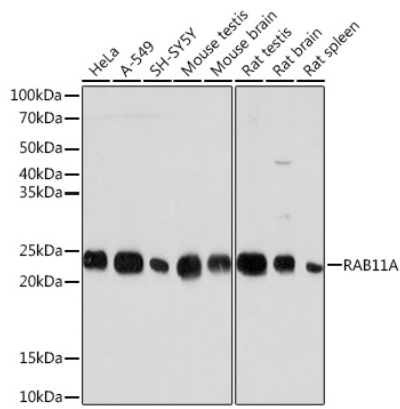
Affinity purification

Storage

Store at -20°C. Avoid freeze / thaw cycles.

Buffer: PBS containing 50% glycerol and 0.05% BSA, preserved with proclin300 or sodium azide (as specified on the Certificate of Analysis), pH 7.3.

Validation Data



Western blot analysis of various lysates using RAB11A Rabbit mAb (A3251) at 1:1000 dilution.

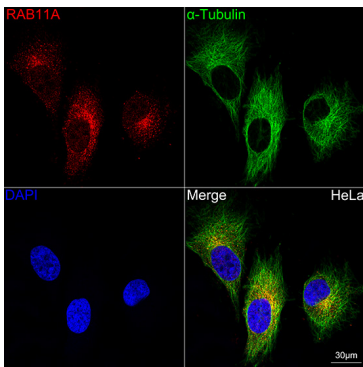
Secondary antibody: HRP-conjugated Goat anti-Rabbit IgG (H+L) (AS014) at 1:10000 dilution.

Lysates/proteins: 25µg per lane.

Blocking buffer: 3% nonfat dry milk in TBST.

Detection: ECL Basic Kit (RM00020).

Exposure time: 3min.



Confocal imaging of HeLa cells using RAB11A Rabbit mAb (A3251, dilution 1:100) (Red). The cells were counterstained with α -Tubulin Rabbit mAb (AC049, dilution 1:100) (Green). DAPI was used for nuclear staining (blue). Objective: 60x.