

A24343

Leader in Biomolecular Solutions for Life Science



CD146 Rabbit mAb

Catalog No.: A24343

Recombinant

1 Publications

Basic Information

Observed MW

100kDa,110kDa,120kDa

Calculated MW

71kDa

Category

SMab Recombinant Monoclonal Antibody

Applications

WB,IHC-P,FC,ELISA

Cross-Reactivity

Human,Mouse,Rat

CloneNo number

ARC62356

Recommended Dilutions

WB 1:500 - 1:1000

IHC-P 1:50 - 1:200

FC 1:50 - 1:200

ELISA Recommended starting concentration is 1 µg/mL. Please optimize the concentration based on your specific assay requirements.

Contact



www.abclonal.com

Background

Predicted to be involved in angiogenesis and positive regulation of cell migration. Predicted to act upstream of or within heterophilic cell-cell adhesion via plasma membrane cell adhesion molecules. Predicted to be located in external side of plasma membrane; extracellular space; and nucleus. Predicted to be active in plasma membrane. Is expressed in several structures, including adipose tissue; genitourinary system; gut; nervous system; and respiratory system. Orthologous to human MCAM (melanoma cell adhesion molecule).

Immunogen Information

Gene ID

84004

Swiss Prot

Q8R2Y2

Immunogen

Recombinant protein (or fragment). This information is considered to be commercially sensitive.

Synonyms

CD146; CD149; Muc18; s-endo; 1-gicerin; s-gicerin

Product Information

Source

Rabbit

Isotype

IgG

Purification

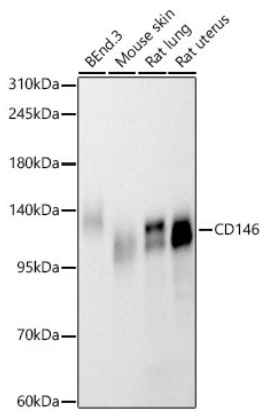
Affinity purification

Storage

Store at -20°C. Avoid freeze / thaw cycles.

Buffer: PBS containing 50% glycerol and 0.05% BSA, preserved with proclin300 or sodium azide (as specified on the Certificate of Analysis), pH 7.3.

Validation Data



Western blot analysis of various lysates, using CD146 Rabbit mAb (A24343) at 1:1000 dilution.

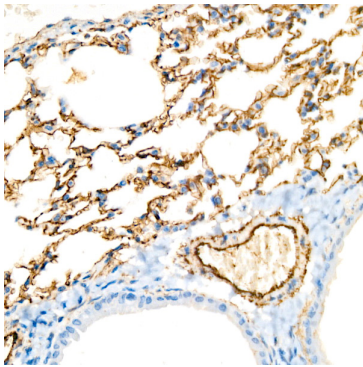
Secondary antibody: HRP-conjugated Goat anti-Rabbit IgG (H+L) (AS014) at 1:10000 dilution.

Lysates/proteins: 25µg per lane.

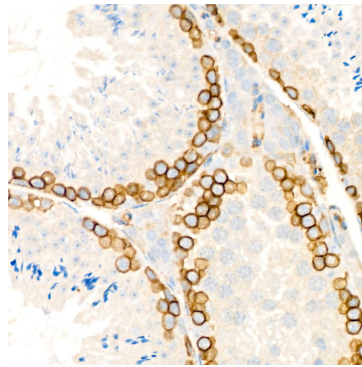
Blocking buffer: 3% nonfat dry milk in TBST.

Detection: ECL Basic Kit (RM00020).

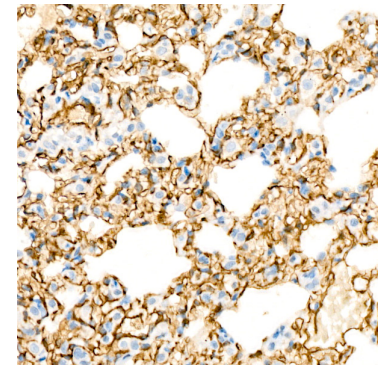
Exposure time: 60s.



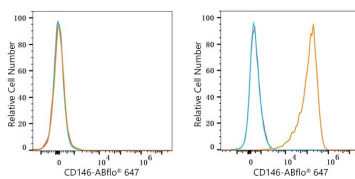
Immunohistochemistry analysis of paraffin-embedded Mouse lung using CD146 Rabbit mAb (A24343) at dilution of 1:200 (40x lens). High pressure antigen retrieval performed with 0.01M Citrate buffer (pH 6.0) prior to IHC staining.



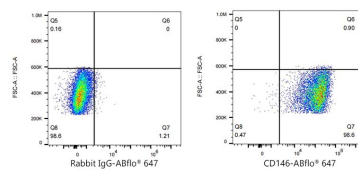
Immunohistochemistry analysis of paraffin-embedded Mouse testis using CD146 Rabbit mAb (A24343) at dilution of 1:200 (40x lens). High pressure antigen retrieval performed with 0.01M Citrate buffer (pH 6.0) prior to IHC staining.



Immunohistochemistry analysis of paraffin-embedded Rat lung using CD146 Rabbit mAb (A24343) at dilution of 1:200 (40x lens). High pressure antigen retrieval performed with 0.01M Citrate buffer (pH 6.0) prior to IHC staining.



Flow cytometry: 1×10^6 CTLL-2 cells (negative control, Left) and bEnd.3 cells (Right) were surface-stained with CD146 Rabbit mAb (A24343, 2µg/mL, orange line) or ABflo® 647 Rabbit IgG isotype control (A22070, 2µg/mL, blue line), followed by Alexa Fluor® 647 conjugated goat anti-rabbit pAb staining. Non-fluorescently stained cells were used as blank control (red)



Flow cytometry: 1×10^6 bEnd.3 cells were surface-stained with ABflo® 647 Rabbit IgG isotype control (A22070, 2µg/mL, left) or CD146 Rabbit mAb (A24343, 2µg/mL, right).

Validation Data

line).