

A7647

Leader in Biomolecular Solutions for Life Science



# BCS1L Rabbit pAb

Catalog No.: A7647

## Basic Information

### Observed MW

48kDa

### Calculated MW

48kDa

### Category

Polyclonal Antibody

### Applications

WB,IHC-P,IF/ICC,ELISA

### Cross-Reactivity

Human,Mouse,Rat

## Background

This gene encodes a homolog of the *S. cerevisiae* bcs1 protein which is involved in the assembly of complex III of the mitochondrial respiratory chain. The encoded protein does not contain a mitochondrial targeting sequence but experimental studies confirm that it is imported into mitochondria. Mutations in this gene are associated with mitochondrial complex III deficiency and the GRACILE syndrome. Several alternatively spliced transcripts encoding two different isoforms have been described.

## Recommended Dilutions

**WB** 1:500 - 1:2000

**IHC-P** 1:50 - 1:200

**IF/ICC** 1:50 - 1:200

**ELISA** Recommended starting concentration is 1 µg/mL. Please optimize the concentration based on your specific assay requirements.

## Immunogen Information

### Gene ID

617

### Swiss Prot

Q9Y276

### Immunogen

Recombinant protein (or fragment). This information is considered to be commercially sensitive.

### Synonyms

BCS; BJS; PTD; BCS1; FLNMS; h-BCS; MC3DN1; h-BCS1; GRACILE; Hs.6719; BCS1L

## Product Information

### Source

Rabbit

### Isotype

IgG

### Purification

Affinity purification

### Storage

Store at -20°C. Avoid freeze / thaw cycles.

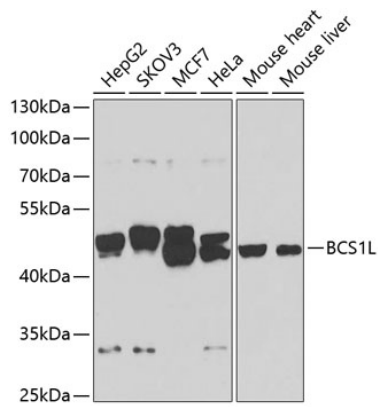
Buffer: PBS containing 50% glycerol, preserved with proclin300 or sodium azide (as specified on the Certificate of Analysis), pH 7.3.

## Contact



[www.abclonal.com](http://www.abclonal.com)

## Validation Data



Western blot analysis of various lysates using BCS1L Rabbit pAb (A7647) at 1:1000 dilution.

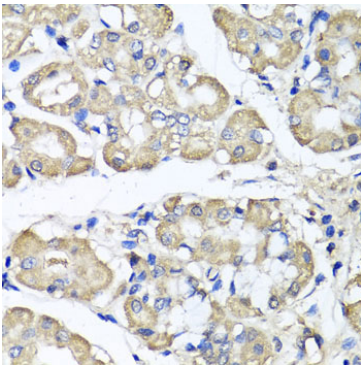
Secondary antibody: HRP-conjugated Goat anti-Rabbit IgG (H+L) (AS014) at 1:10000 dilution.

Lysates/proteins: 25µg per lane.

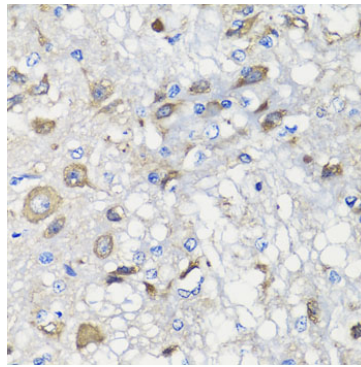
Blocking buffer: 3% nonfat dry milk in TBST.

Detection: ECL Basic Kit (RM00020).

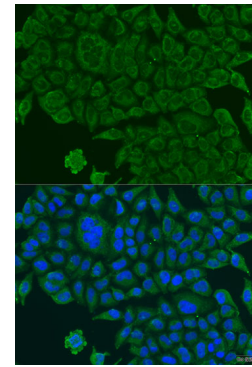
Exposure time: 30s.



Immunohistochemistry analysis of paraffin-embedded Human stomach using BCS1L Rabbit pAb (A7647) at dilution of 1:100 (40x lens). Microwave antigen retrieval performed with 0.01M PBS Buffer (pH 7.2) prior to IHC staining.



Immunohistochemistry analysis of paraffin-embedded Rat brain using BCS1L Rabbit pAb (A7647) at dilution of 1:100 (40x lens). Microwave antigen retrieval performed with 0.01M PBS Buffer (pH 7.2) prior to IHC staining.



Immunofluorescence analysis of U2OS cells using BCS1L Rabbit pAb (A7647) at dilution of 1:100. Secondary antibody: Cy3-conjugated Goat anti-Rabbit IgG (H+L) (AS007) at 1:500 dilution. Blue: DAPI for nuclear staining.