

RP01443

Leader in Biomolecular Solutions for Life Science



# Recombinant Human Apolipoprotein E/ApoE Protein

Catalog No.: RP01443 **Recombinant**

## Sequence Information

Species	Gene ID	Swiss Prot
HEK293 cells	348	P02649

### Tags

C-His

### Synonyms

APOE;AD2;APO-E;ApoE4;LDLCQ5;LPG;ApoE

## Product Information

Source	Purification
HEK293 cells	≥ 95 % as determined by SDS-PAGE.

### Endotoxin

< 0.1 EU/μg of the protein by LAL method.

### Formulation

Lyophilized from a 0.22 μm filtered solution of PBS, pH 7.4.

### Reconstitution

Centrifuge the vial before opening. Reconstitute to a concentration of 0.1-0.5 mg/mL in sterile distilled water. Avoid vortex or vigorously pipetting the protein. For long term storage, it is recommended to add a carrier protein or stabilizer (e.g. 0.1% BSA, 5% HSA, 10% FBS or 5% Trehalose), and aliquot the reconstituted protein solution to minimize free-thaw cycles.

## Contact



[www.abclonal.com](http://www.abclonal.com)

## Background

This protein is a major apoprotein of the chylomicron. It binds to a specific liver and peripheral cell receptor, and is essential for the normal catabolism of triglyceride-rich lipoprotein constituents. This gene maps to chromosome 19 in a cluster with the related apolipoprotein C1 and C2 genes. Mutations in this gene result in familial dysbetalipoproteinemia, or type III hyperlipoproteinemia (HLP III), in which increased plasma cholesterol and triglycerides are the consequence of impaired clearance of chylomicron and VLDL remnants.

## Basic Information

### Description

Recombinant Human Apolipoprotein E/ApoE Protein is produced by HEK293 cells expression system. The target protein is expressed with sequence (Lys19-His317) of human Apolipoprotein E/ApoE (Accession #NP\_000032.1) fused with a 6×His tag at the C-terminus.

### Bio-Activity

Measured by its binding ability in a functional ELISA. Immobilized Human ApoE (Catalog: RP01443) at 5ug/mL (100 μL/well) can bind Human TREM2 (Catalog: RP01159) with a linear range of 0.6-65 ng/mL .

### Shipping

The product is shipped at ambient temperature. Upon receipt, store it immediately at the temperature recommended below.

### Operational Notes

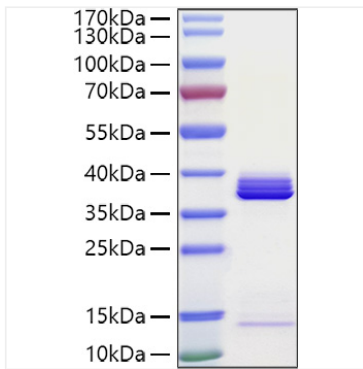
For your safety and health, please wear a lab coat and disposable gloves for handling.

### Storage

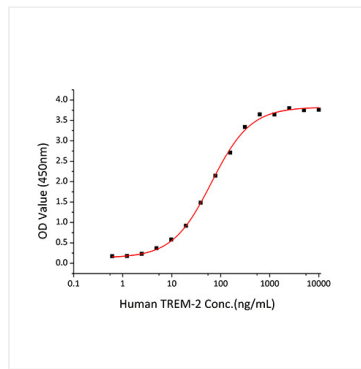
Store at -20°C. Store the lyophilized protein at -20°C to -80 °C up to 1 year from the date of receipt. After reconstitution, the protein solution is stable at -20°C for 3 months, at 2-8°C for up to 1 week. Avoid repeated freeze/thaw cycles.

\* For your safety and health, please wear a lab coat and disposable gloves when handling.

## Validation Data



Recombinant Human Apolipoprotein E/ApoE Protein was determined by SDS-PAGE under reducing conditions with Coomassie Blue.



Immobilized Human ApoE at 5 $\mu$ g/mL (100  $\mu$ L/well) can bind Human TREM2 with a linear range of 0.6-65 ng/mL .