

A24295

Leader in Biomolecular Solutions for Life Science



www.abclonal.com

NCR3 Rabbit mAb

Catalog No.: A24295 **Recombinant**

Basic Information

Observed MW

30kDa

Calculated MW

16kDa/17kDa/18kDa/19kDa/20kDa/21kDa

Category

SMab Recombinant Monoclonal Antibody

Applications

WB,IF/ICC,ELISA,FC (intra)

Cross-Reactivity

Human

CloneNo number

ARC60018

Recommended Dilutions

WB 1:1000 - 1:2000

IF/ICC 1:200 - 1:800

FC (intra) 1:500 - 1:1000

ELISA Recommended starting concentration is 1 µg/mL. Please optimize the concentration based on your specific assay requirements.

Contact

 www.abclonal.com

Background

The protein encoded by this gene is a natural cytotoxicity receptor (NCR) that may aid NK cells in the lysis of tumor cells. The encoded protein interacts with CD3-zeta (CD247), a T-cell receptor. A single nucleotide polymorphism in the 5' untranslated region of this gene has been associated with mild malaria susceptibility. Three transcript variants encoding different isoforms have been found for this gene.

Immunogen Information

Gene ID

259197

Swiss Prot

O14931

Immunogen

Recombinant protein (or fragment). This information is considered to be commercially sensitive.

Synonyms

NCR3; 1C7; CD337; LY117; MALS; NKp30; natural cytotoxicity triggering receptor 3

Product Information

Source

Rabbit

Isotype

IgG

Purification

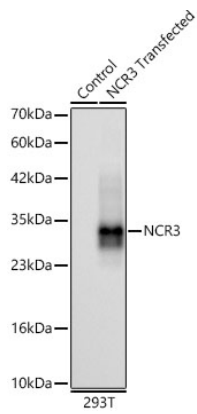
Affinity purification

Storage

Store at -20°C. Avoid freeze / thaw cycles.

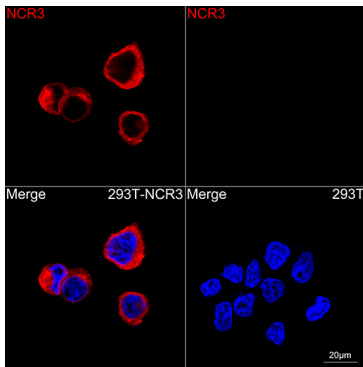
Buffer: PBS containing 50% glycerol and 0.05% BSA, preserved with proclin300 or sodium azide (as specified on the Certificate of Analysis), pH 7.3.

Validation Data

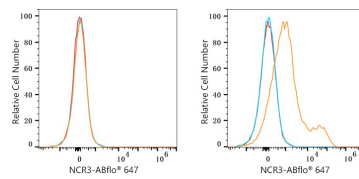


Western blot analysis of lysates from wild type (WT) and 293T cells transfected with using NCR3 Rabbit mAb (A24295) at 1:1000 dilution.
Secondary antibody: HRP-conjugated Goat anti-Rabbit IgG (H+L) (AS014) at 1:10000 dilution.

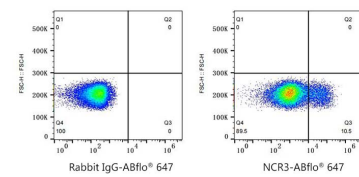
Lysates/proteins: 25µg per lane.
Blocking buffer: 3% nonfat dry milk in TBST.
Detection: ECL Basic Kit (RM00020).
Exposure time: 60s.



Confocal imaging of 293T cells transfected with NCR3 using NCR3 (A24295, dilution 1:200) followed by a further incubation with Cy3 Goat Anti-Rabbit IgG (H+L) (AS007, dilution 1:500) (Red). DAPI was used for nuclear staining (Blue). Objective: 100x.



Flow cytometry: 1×10^6 293T cells (Low Expression, left) and 293T (Transfection, right) cells were intracellularly-stained with NCR3 Rabbit mAb (A24295, 2µg/mL, orange line) or ABflo® 647 Rabbit IgG isotype control (A22070, 2µg/mL, blue line), followed by Alexa Fluor® 647 conjugated goat anti-rabbit pAb (1:200 dilution) staining. Non-fluorescently stained cells were used as blank control (red line).



Flow cytometry: 1×10^6 293T (Transfection) cells were intracellularly-stained with ABflo® 647 Rabbit IgG isotype control (A22070, 2 µg/mL, left) or NCR3 Rabbit mAb (A24295, 2 µg/mL, right).