

AS062

Leader in Biomolecular Solutions for Life Science



# HRP-conjugated Goat anti-Mouse IgG Light Chain

Catalog No.: AS062 **28 Publications**

## Basic Information

---

**Observed MW**

**Calculated MW**

**Category**

Secondary Antibody

**Applications**

WB

**Cross-Reactivity**

Mouse

**Conjugate**

HRP

## Background

---

Secondary antibodies are affinity-purified antibodies which will work with target-specific primary antibody in the detection, sorting or purification of its specified target. Secondary antibodies offer increased versatility enabling users to use many detection systems (e.g. HRP, AP, fluorescence). They can also provide greater sensitivity through signal amplification as multiple secondary antibodies. Most commonly, secondary antibodies are generated by immunizing the host animal (different from host species of primary antibody) with a pooled population of normal immunoglobulins from the host species of primary antibody and can be further purified and modified (i.e. antibody fragmentation, label conjugation, etc.) to ensure well-characterized specificity to corresponding normal immunoglobulins.

## Recommended Dilutions

---

WB 1:1000 - 1:5000

## Immunogen Information

---

**Gene ID**

**Swiss Prot**

**Immunogen**

This information is considered to be commercially sensitive.

**Synonyms**

## Contact

---

 [www.abclonal.com](http://www.abclonal.com)

## Product Information

---

**Source**

Goat

**Isotype**

IgG

**Purification**

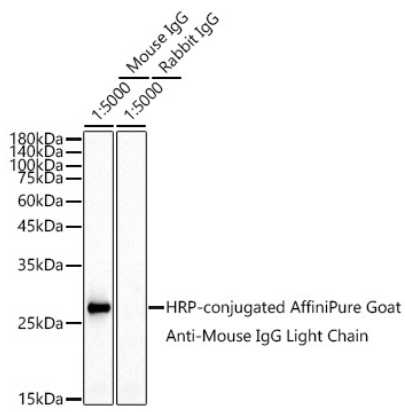
Affinity purification

**Storage**

Store at -20°C. Avoid freeze / thaw cycles.  
Buffer: PBS with 50% glycerol, pH 7.3.

## Validation Data

---



Western blot analysis of lysates from mouse IgG, using HRP-conjugated Goat Anti-Mouse IgG Light Chain (AS062) at 1:5000 dilution.

Lysates/proteins: 100ng per lane.

Blocking buffer: 3% nonfat dry milk in TBST.

Detection: ECL Enhanced Kit (RM00021).

Exposure time: 90s.